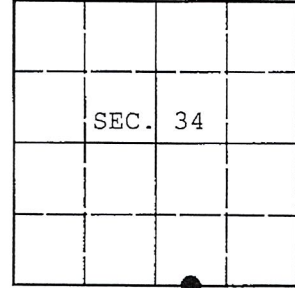


U.S. PUBLIC LAND SURVEY MONUMENT RECORD

Note: This form is intended and designed to fulfill all requirements of Wisconsin Administrative Code, Chapter A-E 7.08 U.S. Public Land Survey Monument Record (3) (a) (b) (c) (d) (e) (f) (g) (h) (i). An additional sheet may be added if necessary to conform with said requirements.

(a) CORNER LOCATION: WISCRS - Oneida County
Meander Cor. of Secs. 3 & 34 N: 134,813.60 USft
Township 35 & 36 North E: 184,754.88 USft
Range 6 East of the 4th P.M. Datum: NAD 1983(2011)
Town of Nokomis County of Oneida



(b) HISTORY OF ORIGINAL CORNER ESTABLISHMENT

Original Surveyor: Original Accessories:
Date of Survey: Commenced:
Completed:

(b) (f) (g) (h) Description of monument found at this corner and if it was accepted, state all evidence (material, testimonial, occupational, plats, records, other monuments) used as a basis for accepting. If not accepted or if nothing was found, state evidence used as basis for establishing location. If re-established through lost corner proportionate methods, indicate all monuments, distances and directions used to establish. Indicate type of monument and sign post found or set.

NOTE: This is a perpetuation of a previous USPLS Monument Record by William C. Rohde, RLS dated October 31, 2004 and filed in the office of the Oneida County Register of Deeds. A complete history of the corner can be found on the previous monument record. I accept the previous location as a true and faithful perpetuation or reestablishment of the original corner location and further perpetuate it as follows.

April 5, 2016: I found and accepted the record monument, a 2.5" diam. aluminum pipe with 3.25" diam. Oneida Co. aluminum cap projecting 6" above the ground surface. The existing accessories were found in substantial agreement with the record and were not remeasured as the sole purpose of this work is to report the coordinates of the corner point.

The coordinates shown were derived from two independent RTN observations of the corner point and are referenced to the WISCORS GNSS Network.

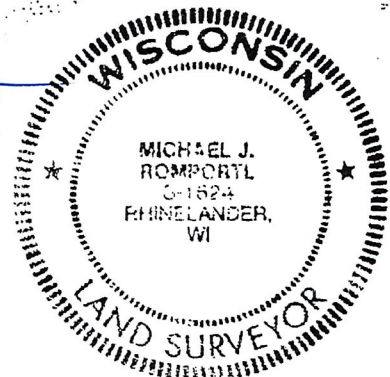
(c) (d) (e) Plan view of corner with ties to at least 4 witness monuments. If in disagreement with previously established corner, show the distances between the two corners and also indicate the ties to the disputed.

REGISTER OF DEEDS OFFICE
ONEIDA COUNTY
FILED

DEC 28 2016

AT O'CLOCK M
KYLE J. FRANSON
REGISTER OF DEEDS

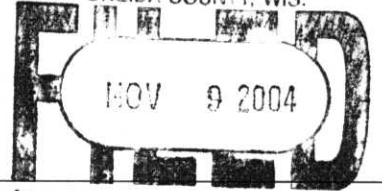
RECEIVED BY LINCOLN COUNTY
SURVEYOR THIS 17th DAY
OF January 20 18
[Signature]
COUNTY SURVEYOR



(i) I, Michael J. Romportl, Professional Land Surveyor No. S-1624, hereby certify that the corner location on this record was determined by me or under my direction and control and that this U.S. Public Land Survey Monument Record is correct and complete to the best of my knowledge and belief.

Signature: Michael J. Romportl Date: 12/23/2016

A-15/16



At _____ o'clock _____ M
THOMAS H. LEIGHTON
REGISTER OF DEEDS

Recorders Data

This form is intended to fulfill the requirements of Chapter A-E7.08 (3)(a) thru (i) U.S. Public Land Survey Monument Location Record, Wisconsin Administrative Code. Use the reverse side of form for continuation.

U.S. PUBLIC LAND SURVEY MONUMENT LOCATION RECORD

USPLS CORNER: WEST WITNESS MC SECTION: 34 TOWNSHIP: 36 NORTH RANGE: 6 EAST

NAME OF WATERWAY FOR M.C. CORNER : LAKE NOKOMIS SECTION LINE: SOUTH

~~(CITY)(VILLAGE)(TOWN)~~ OF: NOKOMIS COUNTY OF: ONEIDA

Description of monument found or placed and all other evidence used as the basis for monument location; including monuments and measurements required if the corner location was reestablished by lost corner proportionate methods. Also indicate name of the original surveyor, original survey date and the corner monument, bearing trees, witness or other reference monuments established, including measured bearing and distance ties, from available survey records.

Found an older undisturbed record 1.5" dia. iron pipe with uncapped top 6" up at this corner location, which I left in place and drove a standard 2" dia. by 30" long aluminum pipe monument over it with stamped Oneida County cap 9" up. This corner falls on the East end of an old smooth woven wire fence leading West and is about 40' West of the lowered lake shoreline this date and about 9' West of a rocky riprapped shoreline bearing S20°W +/-.

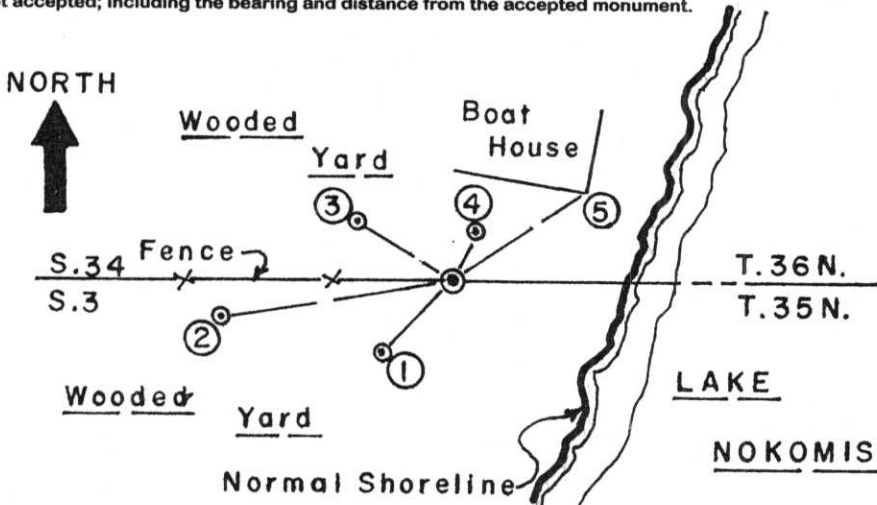
No wood post was set nor BTs marked by the original GLO survey as Lake Nokomis was impounded by daming later.

In December 1967, Louis W. Lembcke/RLS 783 notes and iron pipe in place at this corner per legend on Plat of Survey filed as B-4424 in Oneida County survey records.

In November 2002, Lester J. Schmit/RLS 1192 notes a 1.625" OD iron pipe found at this corner per legend on Plat of Survey filed as B-5199 in Oneida County survey records.

This recovery completed September 8, 2004 and directly witnessed by South adjoiner owner Frank Pawlak.

Plan view map of monument location with bearing and distance ties to a minimum of four(4) described witness or reference monuments of concrete, natural stone, iron, live bearing trees or equivalent material. If applicable, also show a minimum of two(2) bearing and distance ties to any other monument found and not accepted; including the bearing and distance from the accepted monument.



WITNESS MONUMENT TIES:

- ① New 10" Or BT S45°W 5.68' to PK/W in left face.
- ② New 11" Or BT S80°W 12.17'.
- ③ New 10" Pr BT N58°W 5.80'.
- ④ New 9" Pr BT N25°E 2.83' to PK/W 46" up in right face due to intervening fence.
- ⑤ SE corner of concrete block boat house N55°E 8.35'.

Standard white poly 'T' marker post set 3" East of corner along fence post.

SCALE: 1" = 10'

Unless otherwise indicated, all bearing tree ties are to a .25" dia. by 2.5" long PK nail with a 1.25" dia. steel washer driven into unblazed right face and a .25" dia. by 2.5" long PK nail with a 2" dia. steel washer stamped BT is also driven into unblazed face of bearing tree at DBH; the basis for measured bearings is by compass to nearest degree and all tie distances are measured horizontal by steel tape corrected to nearest 1/100th feet at standard temperature of 68° F.

RLS SEAL:

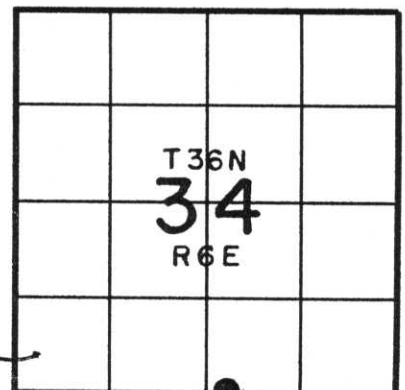


LAND SURVEYOR CERTIFICATE:

I, William C. Rohde, hereby certify that I am duly licensed as a Professional Land Surveyor in the State of Wisconsin; that this USPLS monument location was determined by me and/or under my direct supervision and control; and that this U.S. Public Land Survey Monument Location Record is true and correct to the best of my knowledge and belief.

Signed: *William C. Rohde*
William C. Rohde RLS 841

Date Signed: October 31, 2004



SECTION LOCATION MAP
INDEX NO. 2 15-16

3606340015

A-1516