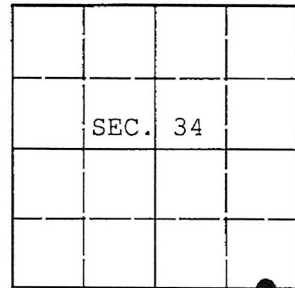


U.S. PUBLIC LAND SURVEY MONUMENT RECORD

Note: This form is intended and designed to fulfill all requirements of Wisconsin Administrative Code, Chapter A-E 7.08 U.S. Public Land Survey Monument Record (3) (a) (b) (c) (d) (e) (f) (g) (h) (i). An additional sheet may be added if necessary to conform with said requirements.

(a) CORNER LOCATION: WISCRS - Oneida County
Meander Cor. of Secs. 3 & 34 N: 134,805.13 USft
Township 35 & 36 North E: 186,059.79 USft
Range 6 East of the 4th P.M. Datum: NAD 1983(2011)
Town of Nokomis County of Oneida



(b) HISTORY OF ORIGINAL CORNER ESTABLISHMENT

Original Surveyor: Original Accessories:
Date of Survey: Commenced:
Completed:

(b) (f) (g) (h) Description of monument found at this corner and if it was accepted, state all evidence (material, testimonial, occupational, plats, records, other monuments) used as a basis for accepting. If not accepted or if nothing was found, state evidence used as basis for establishing location. If re-established through lost corner proportionate methods, indicate all monuments, distances and directions used to establish. Indicate type of monument and sign post found or set.

NOTE: This is a perpetuation of a previous USPLS Monument Record by William C. Rohde, RLS dated October 31, 2004 and filed in the office of the Oneida County Register of Deeds. A complete history of the corner can be found on the previous monument record. I accept the previous location as a true and faithful perpetuation or reestablishment of the original corner location and further perpetuate it as follows.

April 5, 2016: I found and accepted the record monument, a 2.5" diam. aluminum pipe with 3.25" diam. Oneida Co. aluminum cap flush with the ground surface. The existing accessories were found in substantial agreement with the record and were not remeasured as the sole purpose of this work is to report the coordinates of the corner point.

The coordinates shown were derived from two independent RTN observations of the corner point and are referenced to the WISCORS GNSS Network.

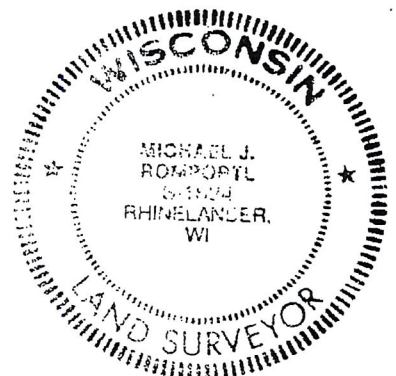
(c) (d) (e) Plan view of corner with ties to at least 4 witness monuments. If in disagreement with previously established corner, show the distances between the two corners and also indicate the ties to the disputed.

REGISTER OF DEEDS OFFICE
ONEIDA COUNTY
FILED

DEC 28 2016

AT O'CLOCK M
KYLE J. FRANSON
REGISTER OF DEEDS

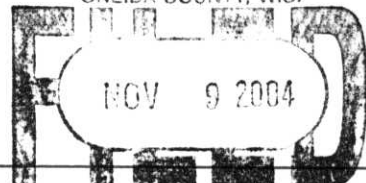
RECEIVED BY LINCOLN COUNTY
SURVEYOR THIS 17TH DAY
OF January 20 18
Tary O'Neil
COUNTY SURVEYOR



A-16/17

(i) I, Michael J. Romportl, Professional Land Surveyor No. S-1624, hereby certify that the corner location on this record was determined by me or under my direction and control and that this U.S. Public Land Survey Monument Record is correct and complete to the best of my knowledge and belief.

Signature: Michael J Romportl Date: 12/23/2016



Attest: William C. Leighton M
Register of Deeds
Recorders Data

This form is intended to fulfill the requirements of Chapter A-E7.08 (3)(a) thru (i) U.S. Public Land Survey Monument Location Record, Wisconsin Administrative Code. Use the reverse side of form for continuation.

U.S. PUBLIC LAND SURVEY MONUMENT LOCATION RECORD

USPLS CORNER: EAST WITNESS MC SECTION: 34 TOWNSHIP: 36 NORTH RANGE: 6 EAST
 NAME OF WATERWAY FOR M.C. CORNER : LAKE NOKOMIS SECTION LINE: SOUTH
 (CITY)(VILLAGE)(TOWN) OF: NOKOMIS COUNTY OF: ONEIDA

Description of monument found or placed and all other evidence used as the basis for monument location; including monuments and measurements required if the corner location was reestablished by lost corner proportionate methods. Also indicate name of the original surveyor, original survey date and the corner monument, bearing trees, witness or other reference monuments established, including measured bearing and distance ties, from available survey records.

Found an older record 2" dia. iron pipe undisturbed with uncapped top flush with lawn surface at this corner. I carefully removed the 30" long old iron pipe and drove a standard 2" dia. by 30" long aluminum pipe monument with stamped Oneida County cap flush to grade into the plumb soil cavity left below grade by the old iron pipe. I also found an older 1/2" by 2.5" yellow poly red topped marker stake 6" East of the corner.

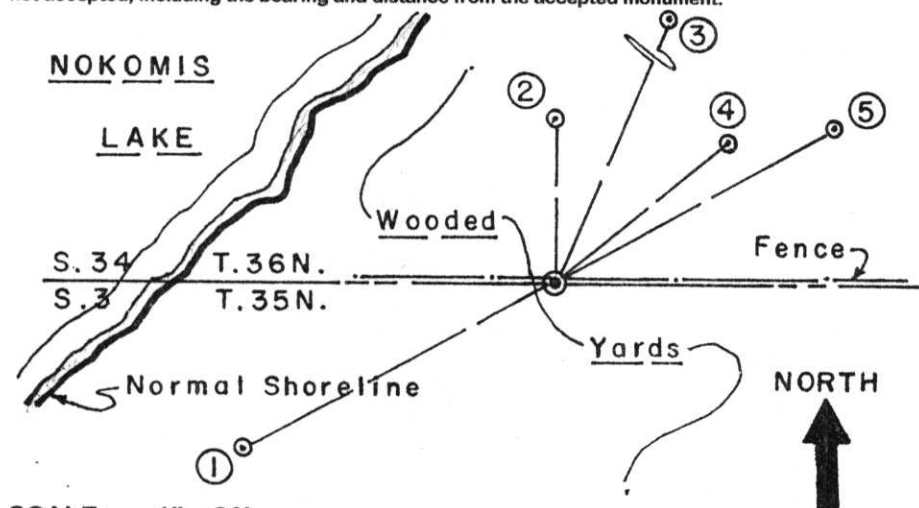
Corner falls about 8" South of an East/West wood rail fence along North line of improved lake lot at Fire #W5761 County Highway 'L' or South line of improved lake lot at Fire #1915 County Highway 'L', and also falls about 40' East of vegetated lake shoreline bearing S45°W +/-.

In August 1860, Alfred Millard/GLO did not set a wood post as this corner nor mark any OBTs as Lake Nokomis was not impounded by damming until afterwards.

In August 1985, Stuart L. Foltz/RLS 1170 found the 2" dia. iron pipe at this corner per Plat of Survey filed as L-380 in Oneida County survey records.

This recovery completed September 10, 2004 and witnessed indirectly by my notification to Nancy Nikolay adjacent owner spouse North of the corner.

Plan view map of monument location with bearing and distance ties to a minimum of four(4) described witness or reference monuments of concrete, natural stone, iron, live bearing trees or equivalent material. If applicable, also show a minimum of two(2) bearing and distance ties to any other monument found and not accepted; including the bearing and distance from the accepted monument.



WITNESS MONUMENT TIES:

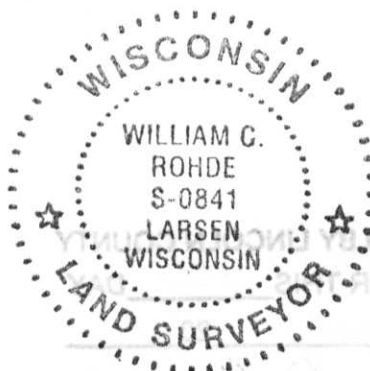
- ① New 16" Mr BT S61°W 37.34'; no PK with BT washer set in face.
- ② New 8.5" Pj BT North 17.67'.
- ③ New 30" basal trunk of twin 15" Or N23°E 41.92'.
- ④ New 8" Pj BT N50°E 22.91'.
- ⑤ New 7" Pw BT N60°E 33.15'.

Standard white poly 'T' marker post set along East side of wood rail fence post 8" North of corner. Nothing flagged as in yard area.

SCALE: 1" = 20'

Unless otherwise indicated, all bearing tree ties are to a .25" dia. by 2.5" long PK nail with a 1.25" dia. steel washer driven into unblazed right face and a .25" dia. by 2.5" long PK nail with a 2" dia. steel washer stamped BT is also driven into unblazed face of bearing tree at DBH; the basis for measured bearings is by compass to nearest degree and all tie distances are measured horizontal by steel tape corrected to nearest 1/100th feet at standard temperature of 68° F.

RLS SEAL:



LAND SURVEYOR CERTIFICATE:

I, William C. Rohde, hereby certify that I am duly licensed as a Professional Land Surveyor in the State of Wisconsin; that this USPLS monument location was determined by me and/or under my direct supervision and control; and that this U.S. Public Land Survey Monument Location Record is true and correct to the best of my knowledge and belief.

Signed: William C. Rohde
William C. Rohde RLS 841

		T 36 N	
		34	
		R 6 E	

A-16,17