

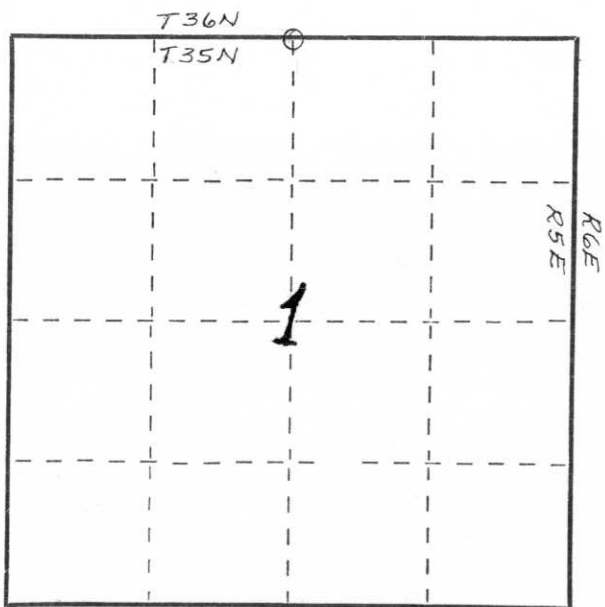
CERTIFIED LAND CORNER RESTORATION

Index No. A-23

State of Wisconsin }  
 County of Lincoln } ss.  
John H. Fisher

I, \_\_\_\_\_, do hereby certify that on the 9 day of September, 1983, I found evidence of the North One Quarter corner of Section 1 Township 35, North, Range 5 East, Fourth, Principal Meridian, as described hereon; and that from this evidence I established a new monument and accessories as described hereon to perpetuate the original location of this corner.

Resident witnesses:  
None



○ = Corner monument restored.

History of original corner establishment:

The original Government Survey was performed by Alfred Millard, Deputy Surveyor in 1860

Wood Post Set			
Yellow Pine	12"	S 5°E	22 links
Spruce Pine	12"	N27°W	10 links

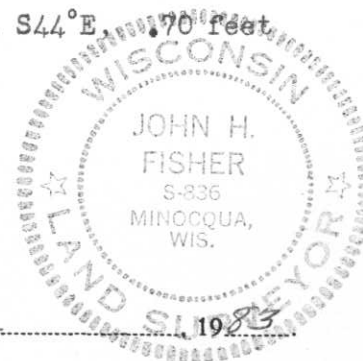
Description of corner evidence found:

7" X 7" Granite monument and post

Description of monument and accessories I established to perpetuate the original location of this corner.

Corner in good condition, I established new witnesses.

2" Aluminium pipe with aluminium tablet, N44°W,	0.70 feet
stamped T36N, R5E, witness corner, 1/4, S36, S 1, T35N, S-836, 1983, S44°E,	0.70 feet
Nail in Jack Pine	12" N54°E 9.62 feet
Nail in Jack Pine	9" N83°W 36.10 feet
Nail in Jack Pine	12" S25°W 18.00 feet
Nail in Jack Pine	9" S 6°E 14.63 feet



Dated at Minocqua, Wis., this 27th day of October, 1983

Signature John H. Fisher Title Registered Land Surveyor Registration No. S-836  
 (County Surveyor, Registered Land Surveyor, or other duly authorized official)

Office of Register of Deeds, County of \_\_\_\_\_, I hereby certify that the within instrument was filed in this office for record on the \_\_\_\_\_ day of \_\_\_\_\_, 19\_\_\_\_ at \_\_\_\_\_ o'clock \_\_\_\_\_ M.

(Register of Deeds)

By \_\_\_\_\_ Deputy