

CERTIFIED LAND CORNER RESTORATION

Index No. A-21

State of Wisconsin }  
 Lincoln } ss.  
 County of .....

History of original corner establishment:  
 The original Government survey was performed by Alfred Millard, Deputy Surveyor in August, 1860.

I, John H. Fisher, do hereby certify that on the 9 day of September, 1983, I found evidence of the Northwest corner of Section 1 Township 35, North, Range 5 East, Fourth, Principal Meridian, as described hereon; and that from this evidence I established a new monument and accessories as described hereon to perpetuate the original location of this corner.

Wood Post Set

White Birch	10"	N35°E	14 links
White Birch	10"	N50°W	30 links
White Pine	6"	S10°E	30 links
White Pine	6"	S25°W	40 links

Description of corner evidence found:

6" X 6" Granite Monument

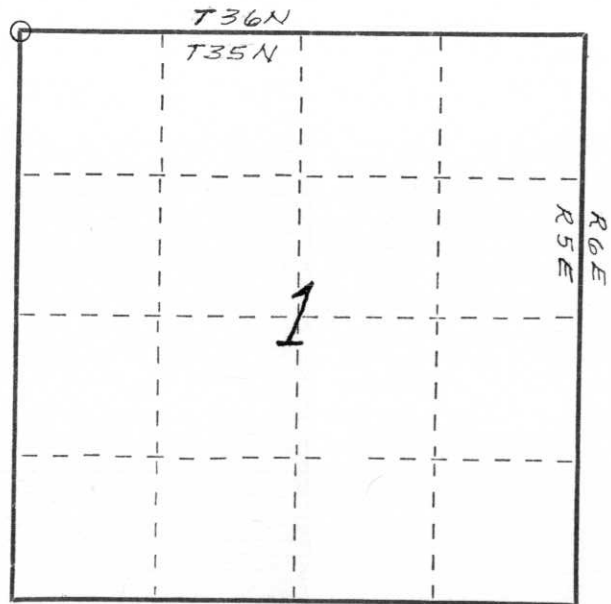
Resident witnesses:

None

Description of monument and accessories I established to perpetuate the original location of this corner.

Corner in good condition, Set 3/4" iron rod and new witness trees

<u>3/4" iron rod</u>		<u>N85°W</u>	<u>0.40 feet</u>
<u>Nail in Jack Pine 12"</u>		<u>N70°E</u>	<u>45.57 feet</u>
<u>Nail in Norway Pine 7"</u>		<u>S 9°W</u>	<u>44.37 feet</u>
<u>Nail in Pople 6"</u>		<u>N35°E</u>	<u>48.44 feet</u>



O = Corner monument restored.



Dated at Minocqua, Wis., this 27th day of October, 1983.

Signature John H. Fisher Title Registered Land Surveyor Registration No. S-836  
 (County Surveyor, Registered Land Surveyor, or other duly authorized official)

Office of Register of Deeds, County of ....., I hereby certify that the within instrument was filed in this office for record on the ..... day of ....., 19..... at ..... o'clock ..... M.

(Register of Deeds)

By ..... Deputy

This form is intended to fulfill the requirements of Chapter A-E 7.08 (3)(a) thru (i) U.S. Public Land Survey Monument Location Record, Wisconsin Administrative Code. Use the reverse side of form for continuation.

RECORDED AT  
 COURTHOUSE THIS 47<sup>th</sup> DAY  
 OF March 20 03  
*Tony Dalbo*  
 LAND INFORMATION OFFICE  
 Recorders Data

**U.S. PUBLIC LAND SURVEY MONUMENT LOCATION RECORD**

USPLS CORNER: SW SECTION CORNER SECTION: 36 TOWNSHIP: 36 NORTH RANGE: 5 EAST  
 NAME OF WATERWAY FOR M.C. CORNER : N/A SECTION LINE: N/A  
 (CITY)(VILLAGE)(TOWN) OF: LITTLE RICE COUNTY OF: ONEIDA

Description of monument found or placed and all other evidence used as the basis for monument location; including monuments and related measurements required if the corner location was reestablished by lost corner proportionate methods. Also indicate name of original surveyor, original survey date and the corner monument, bearing trees, witness or other reference monuments established; including measured bearing and distance ties, from available records.

THIS CORNER WAS RE-REFERENCED WITH PRIOR VERBAL APPROVAL BY ONEIDA COUNTY SURVEYOR MICHAEL ROMPORTL AS RECORD CORNER MONUMENT FOUND DESTROYED IN EXISTING ROADWAY.

This corner was last referenced by John H. Fisher/RLS 836 per U.S. Public Land Survey Monument Location Record dated October 27, 1983 as filed in Oneida County records, which should be referred to for previous historical documentation.

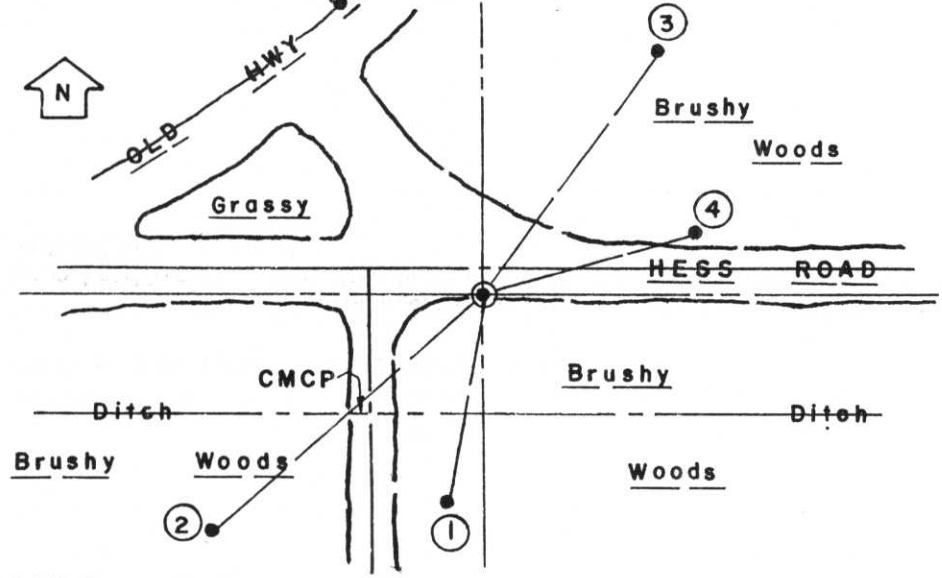
Using Fisher's record ties from his NE Pj BT and SW Pr BT, I could not locate his noted granite monument with iron rod at the corner location in existing gravelled roadway by probing, digging or by MLR detection, so I reset the corner with a standard 2" dia. by 30" long aluminum pipe monument with split bottom end and stamped Oneida County cap to 7" below the South edge of existing gravelled roadway grade.

Fisher's NE and SW BTs had plain blaze markings and an older square BT sign nailed to upper face; his NE Popple BT is gone. I had to cut into lower face blaze scar of his SW Pr BT in order to reveal original face for measuring record tie distance to corner location.

Field conditions were considered unsuitable for setting iron reference monuments on a right line thru the corner nor for additional BTs other than noted below.

This recovery completed May 17, 2002; there were no direct witnesses.

Plan view map of monument location with bearing and distance ties to a minimum of four(4) described witness or reference monuments of concrete, natural stone, iron, live bearing trees or equivalent material. If applicable, also show a minimum of two(2) bearing and distance ties to any other monument found and not accepted; including the bearing and distance from the accepted monument.

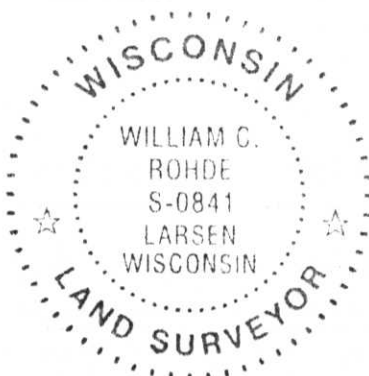


- WITNESS MONUMENT TIES:**
- ① Old 16" Pr BT with upper & lower blaze scars S10°W 44.43'.
  - ② New 10" Pj BT S48°W 75.37'.
  - ③ New 4" Fir BT N36°E 63.20'.
  - ④ Old 16" Pj BT with upper and lower blazes N73°E 45.66'.
- Standard white poly 'T' marker post set 6.2' South of corner and marked "6.2 Feet North" on post face with black marker.
- No other evidence was revealed by careful inspection at corner location.

SCALE: 1"=40'

Unless otherwise indicated, all bearing tree ties are to a .25" dia. by 2.5" long PK nail with a 1.25" dia. steel washer driven into unblazed right face and a .25" dia. by 2.5" long PK nail with a 2" dia. steel washer stamped BT is also driven into unblazed face of bearing tree at DBH; the basis for measured bearings is by compass to nearest degree and all tie distances are measured horizontal by steel tape corrected to nearest 1/100th feet at standard temperature of 68° F.

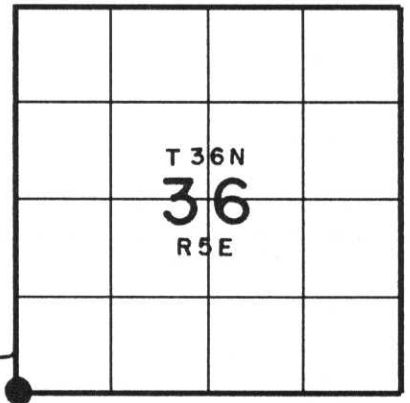
RLS SEAL:



LAND SURVEYOR CERTIFICATE:

I, William C. Rohde, hereby certify that I am duly licensed as a Professional Land Surveyor in the State of Wisconsin; that this USPLS monument location was determined by me and/or under my direct supervision and control; and that this U.S. Public Land Survey Monument Location Record is true and correct to the best of my knowledge and belief.

Signed: *William C. Rohde*  
 William C. Rohde RLS 841



SECTION LOCATION MAP  
 INDEX NO. 2-21

36-05350000

H-21