

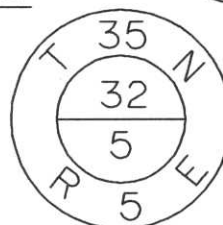


# LINCOLN COUNTY U.S. PUBLIC LAND SURVEY MONUMENT LOCATION RECORD

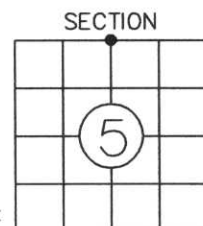
INDEX NO.

LANDMARK       BENCHMARK \_\_\_\_\_  
 CORNER IDENTITY: BERNSTEN ALUMINUM MONUMENT  
 COORDINATE SYSTEM: LINCOLN CO. COORDINATES  
 ZONE: \_\_\_\_\_ ADJUSTMENT: \_\_\_\_\_  
 GRID: \_\_\_\_\_ GROUND: \_\_\_\_\_  
 COMBINATION FACTOR: \_\_\_\_\_  
 ELEVATION-(FEET): \_\_\_\_\_ (DATUM): \_\_\_\_\_  
 DATE OF SURVEY: APRIL 1999  
 SURVEY PARTY: TONY JONES - SCOTT RIDDERBUSCH

FOUND   
 SET   
 RE-SET   
 RE-TIED



WILSON  
 CITY, VILLAGE, TOWN



SECTION  
 LOCATION INDICATED BY ●

## BASIS FOR MONUMENT LOCATION:

(DESCRIBE METHOD OF SURVEY AND CORNER AUTHENTICATION)

ORIGINAL GOV'T SURVEY: JULY 1860 BY ALFRED MILLARD, SET WOOD POST FOR CORNER WITH BEARINGS, HEMLOCK 10", N27°W, 7 LINKS, AND A HEMLOCK 7", S40°W, 10 LINKS.

MAY 1988, LESTER J. SCHMIT FOUND A PK NAIL 2' SOUTH OF CENTERLINE OF OLD HIGHWAY "8" FOR THE CORNER REFERENCED BY A 1 1/4" IRON PIPE S0°40'E, 50' FROM A SURVEY BY ARVIN M. HESS IN JULY 1978. BEARINGS, SOFT MAPLE 5", N8°W, 50.81, NORWAY PINE 8", N63°E, 100.35', WHITE BIRCH 5", S23°W, 58.94', AND SET BERNSTEN MONUMENT FOR THE CORNER.

APRIL 1999 BHA FOUND THE CORNER AND 3 OF THE TIES. THE WHITE BIRCH APPEARED TO HAVE BEEN CUT AND SET TWO ADDITIONAL TIES AS SHOWN BELOW.

FIELD BOOK NO. \_\_\_\_\_ PAGE NO. \_\_\_\_\_  
 BHA PROJECT NO: 99033

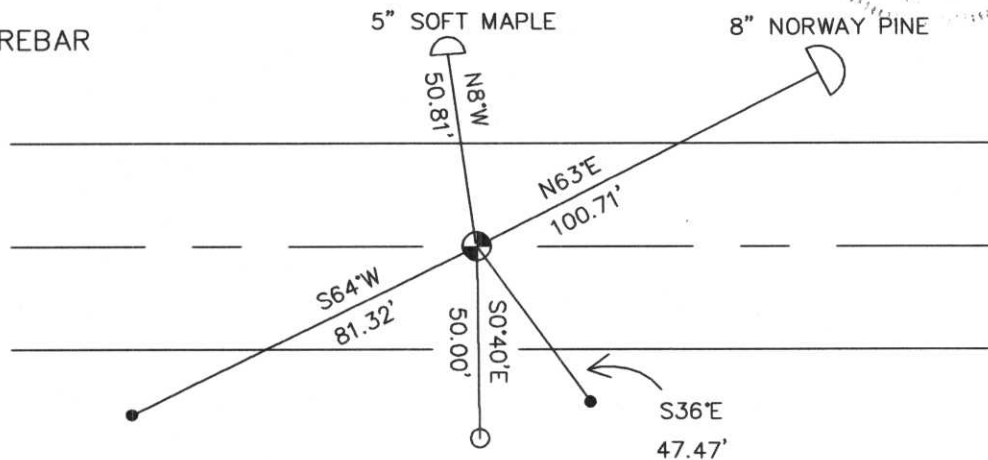
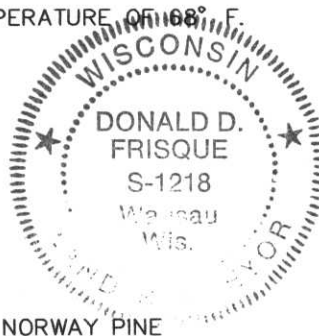
BY: Donald D. Frisque  
 DON FRISQUE S-1218  
 DATE: 2/23/01 CERTIFIED IN ACCORDANCE WITH A-E 7.08:  
 BECHER-HOPPE ASSOCIATES, INC.

## TIE SKETCH:

SHOW MINIMUM OF FOUR (4) HORIZONTAL TIE DISTANCES TO FIXED WITNESS MONUMENTS. DESCRIBE ALL MONUMENTS FOUND OR SET. CORRECT ALL DISTANCES SHOWN AS STANDARD TEMPERATURE OF 68° F.

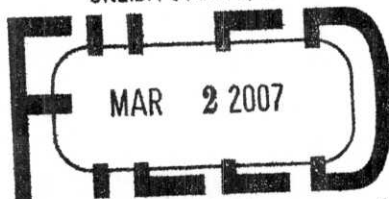
### LEGEND

- FOUND BERNSTEN MONUMENT
- FOUND 1 1/4" IRON PIPE
- SET 3/4" REBAR W/CAP



RECEIVED AT LINCOLN COUNTY  
 COURTHOUSE THIS 24<sup>TH</sup> DAY  
 OF July 20 01  
Tony Dalton  
 LAND INFORMATION OFFICE

A-7



At \_\_\_\_\_ O'Clock \_\_\_\_\_ M

THOMAS H. LEIGHTON

This form is intended to fulfill the requirements of Chapter A-E7.08 (2)(a) through (2)(d) of the Wisconsin Land Survey Monument Location Record, Wisconsin Administrative Code. Use the reverse side of form for continuation.

**U.S. PUBLIC LAND SURVEY MONUMENT LOCATION RECORD**

Recorders Data

USPLS CORNER: SOUTH 1/4 SECTION: 32 TOWNSHIP: 36 NORTH RANGE: 5 EAST

NAME OF WATERWAY FOR M.C. CORNER : N/A SECTION LINE: N/A

(CITY)(VILLAGE)(TOWN) OF: LITTLE RICE COUNTY OF: ONEIDA

Description of monument found or placed and all other evidence used as the basis for monument location; including monuments and measurements required if the corner location was reestablished by lost corner proportionate methods. Also indicate name of the original surveyor, original survey date and the corner monument, bearing trees, witness or other reference monuments established, including measured bearing and distance ties, from available survey records.

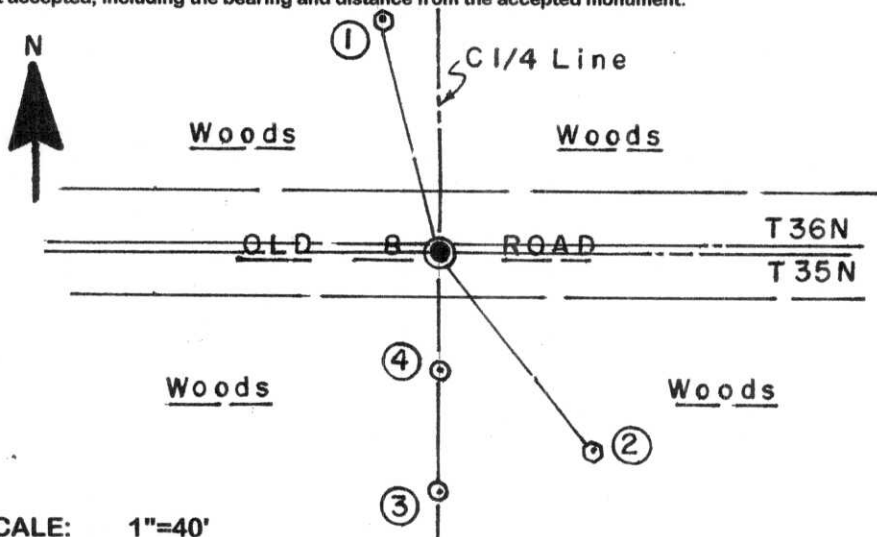
In September 1860, Alfred Millard/GLO set a wood post as the original corner and notes OBTs: a 10" Hemlock N27°W 7 links and a 7" Hemlock S40°W 10 links; all are now obliterated within highway roadway.

On a U.S. Public Land Survey Monument Location Record dated May 9, 1988 as filed in Oneida County records, Lester J. Schmit/RLS 1192 noted that he found a PK nail at this corner, 2 feet South of the centerline of Old Highway 8, which he replaced with a Berntsen monument and also found a 1.25" dia. iron pipe S0°40'E 50.00", per July 1958 survey by Arvin Hess, and noted new BTs: a 5" soft Maple N08°W 50.81', now South 9" Maple of double used for new ties below; an 8" Pr N45°E 100.35', not found; a 1.25" dia. iron pipe S0°40'E 50.00', found bent nearly flat to SW, which I replaced with a standard 2" dia. x 30" long aluminum monument with stamped Oneida County cap 6" above grade as a witness monument; and a 5" Bw S43°W 58.94' found OK but with no spike or blazes. I also found an old 1" dia. iron pipe bent nearly flat on grade to SW about 2' South of new aluminum witness monument set.

I found an older cast aluminum monument stem OK at corner but with cap gone, 1" below existing gravelled roadway surface and about 1.5' South of centerline, which I left in place and used flanged stem center for new ties.

This recovery completed September 8, 2006 at the request of Oneida County surveyor Michael Romporti; there were no direct witnesses.

Plan view map of monument location with bearing and distance ties to a minimum of four(4) described witness or reference monuments of concrete, natural stone, iron, live bearing trees or equivalent material. If applicable, also show a minimum of two(2) bearing and distance ties to any other monument found and not accepted; including the bearing and distance from the accepted monument.



**WITNESS MONUMENT TIES:**

- ① Old 9" South trunk of double Mr BT N15°W 50.93' to PK/W 50" up in right face.
- ② New SW 9" trunk of double Mr BT S38°E 52.48'.
- ③ Standard aluminum monument set South 49.93'.
- ④ 5/8" dia. x 24" long rebar set flush South 25.11'.

Standard white poly 'T' Marker post set North 25.2' near South side of large boulder.

SCALE: 1"=40'

Unless otherwise indicated, all bearing tree ties are to a .25" dia. by 2.5" long PK nail with a 1.25" dia. steel washer driven into unblazed right face and a .25" dia. by 2.5" long PK nail with a 2" dia. steel washer stamped BT is also driven into unblazed face of bearing tree at DBH; the basis for measured bearings is by compass to nearest degree and all tie distances are measured horizontal by steel tape corrected to nearest 1/100th feet at standard temperature of 68° F.

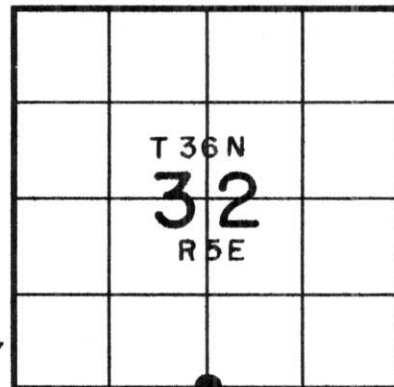
RLS SEAL:



LAND SURVEYOR CERTIFICATE:

I, William C. Rohde, hereby certify that I am duly licensed as a Professional Land Surveyor in the State of Wisconsin; that this USPLS monument location was determined by me and/or under my direct supervision and control; and that this U.S. Public Land Survey Monument Location Record is true and correct to the best of my knowledge and belief.

Signed: *William C. Rohde*  
William C. Rohde RLS 841



SECTION LOCATION MAP  
INDEX NO. \_\_\_\_\_

A-7