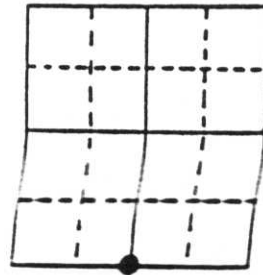


U.S. PUBLIC LAND SURVEY MONUMENT RECORD

Note: This form is intended and designed to fulfill all requirements of Wisconsin Administrative Code, Chapter A-E 7.08 U.S. Public Land Survey Monument Record (3) (a) (b) (c) (d) (e) (f) (g) (h) (i). An additional sheet may be added if necessary conform with said requirements.

(a) Corner location: Township 36 North
 Range 5 East

6-35-5
 N 1/4 cr.



Town of Little Rice

County of Oneida

Section 31

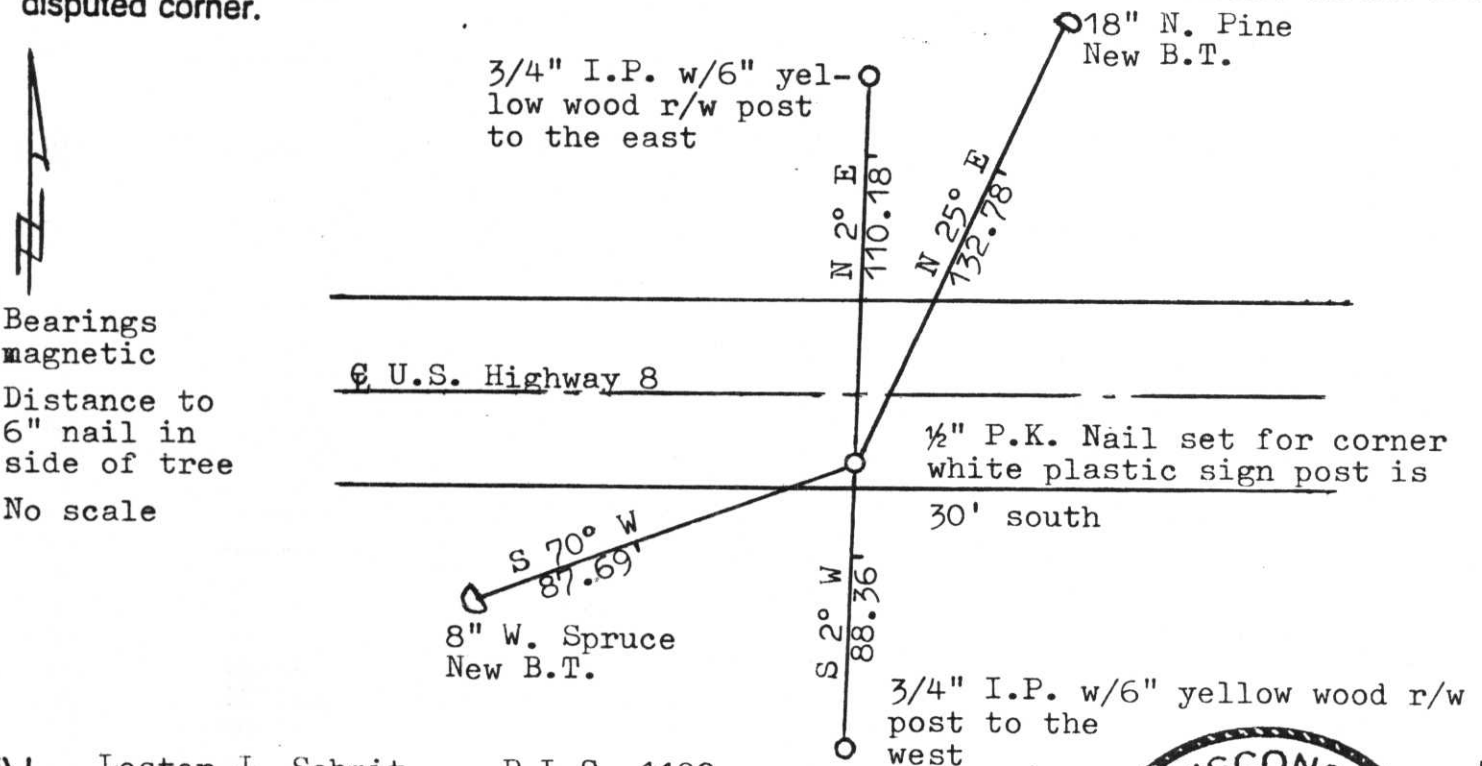
(b) (f) (g) (h) Description of monument found at this corner and if it was accepted, state all evidence (material, testimonial, occupational, plats, records, other monuments) used as a basis for accepting. If not accepted or if nothing was found, state evidence used as basis for establishing location. If reestablished through lost corner proportionate methods, indicate all monuments, distances and directions used to establish. Indicate type of monument found or set and sign post.

1 September 1860, Orig. cor. estab. by Alfred Millard West between 6 & 31....
 40.00 set 1/4 sec post for cor. to Section 6 & 31, B.T.s Sugar 12 North 3 &
 Hemlock 12 S 32 E 32

October 1932, On route location survey for D.O.T., 1/4 sec. cor. is called for being 12' ± south of the centre-line of the highway (U.S. Highway 8).

April 1990, Found no iron for corner location. Using 6" diameter yellow wood right-of-way post north & south for alignment east & west and 12' south of the centre-line of U.S. Highway 8 for alignment north & south to establish the corner location. Set a 1/2" P.K. Nail in the concrete surface for the corner. Stationing distance from SW cor. to S 1/4 cor. is within 2' of the distance called for on D.O.T. map. Witnessed it as shown below.

(c) (d) (e) Plan view of corner with ties to at least 4 witness monuments. If in disagreement with previously established corner, show the distances between the two corners and also indicate the ties to the disputed corner.



Bearings magnetic
 Distance to 6" nail in side of tree
 No scale

(i) I, Lester J. Schmit R.L.S. 1192
 (type or print name) certify that the corner location on this record was determined by me or under my direction and control and that this U.S. Public Land Survey Monument Record is correct and complete to the best of my knowledge and belief.

Lester J. Schmit
 Signature

3 May 1990
 Date



Index No. A-3