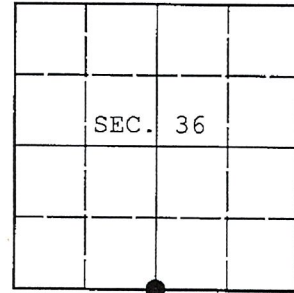


U.S. PUBLIC LAND SURVEY MONUMENT RECORD

Note: This form is intended and designed to fulfill all requirements of Wisconsin Administrative Code, Chapter A-E 7.08 U.S. Public Land Survey Monument Record (3) (a) (b) (c) (d) (e) (f) (g) (h) (i). An additional sheet may be added if necessary to conform with said requirements.

(a) CORNER LOCATION: WISCRS - Oneida County
1/4 Cor. of Secs. 1 & 36 N: 134,795.60 USft
Township 35 & 36 North E: 131,174.01 USft
Range 4 East of the 4th P.M. Datum: NAD 1983(2011)
Town of Lynne County of Oneida



(b) HISTORY OF ORIGINAL CORNER ESTABLISHMENT

Original Surveyor: Original Accessories:
Date of Survey: Commenced:
Completed:

(b) (f) (g) (h) Description of monument found at this corner and if it was accepted, state all evidence (material, testimonial, occupational, plats, records, other monuments) used as a basis for accepting. If not accepted or if nothing was found, state evidence used as basis for establishing location. If re-established through lost corner proportionate methods, indicate all monuments, distances and directions used to establish. Indicate type of monument and sign post found or set.

NOTE: This is a perpetuation of a previous USPLS Monument Record by Darren B. Krzanowski, RLS dated December 14, 2012 and filed in the office of the Oneida County Register of Deeds. A complete history of the corner can be found on the previous monument record. I accept the previous location as a true and faithful perpetuation or reestablishment of the original corner location and further perpetuate it as follows.

April 3, 2016: I found and accepted the record monument, a Berntsen "Survey Mark" nail in the centerline of U.S. Highway 8. The existing accessories were found in substantial agreement with the record and were not remeasured as the sole purpose of this work is to report the coordinates of the corner point.

The coordinates shown were derived from two independent RTK observations of the corner point and are referenced to the WISCORS GNSS Network.

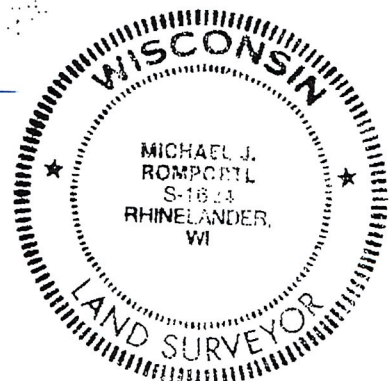
(c) (d) (e) Plan view of corner with ties to at least 4 witness monuments. If in disagreement with previously established corner, show the distances between the two corners and also indicate the ties to the disputed.

REGISTER OF DEEDS OFFICE
ONEIDA COUNTY
FILED

DEC 28 2016

AT O'CLOCK M
KYLE J. FRANSON
REGISTER OF DEEDS

RECEIVED BY LINCOLN COUNTY
SURVEYOR THIS 17TH DAY
OF January 20 18
[Signature]
COUNTY SURVEYOR



(i) I, Michael J. Romportl, Professional Land Surveyor No. S-1624, hereby certify that the corner location on this record was determined by me or under my direction and control and that this U.S. Public Land Survey Monument Record is correct and complete to the best of my knowledge and belief.

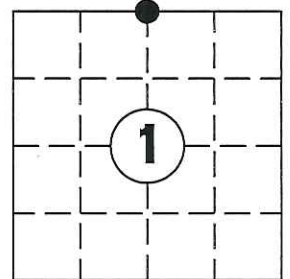
[Signature] 12/23/2016
Signature Date

A-23

# U.S. PUBLIC LAND SURVEY MONUMENT RECORD

NOTE: THIS FORM IS INTENDED AND DESIGNED TO FULFILL ALL REQUIREMENTS OF WISCONSIN ADMINISTRATIVE CODE CHAPTER A-E 7.08 U.S. PUBLIC LAND SURVEY MONUMENT RECORD (3) (a)(b)(c)(d)(e)(f)(g)(h)(i). AN ADDITIONAL SHEET MAY BE ADDED IF NECESSARY TO CONFIRM WITH SAID REQUIREMENTS.

(a) CORNER LOCATION:  
 SECTION 1, TOWNSHIP 35 NORTH, RANGE 4 EAST  
 TOWN OF: SOMO, LINCOLN COUNTY  
 LINCOLN COUNTY COORDINATES:  
 NORTHING: 259196.822  
 EASTING: 330566.042



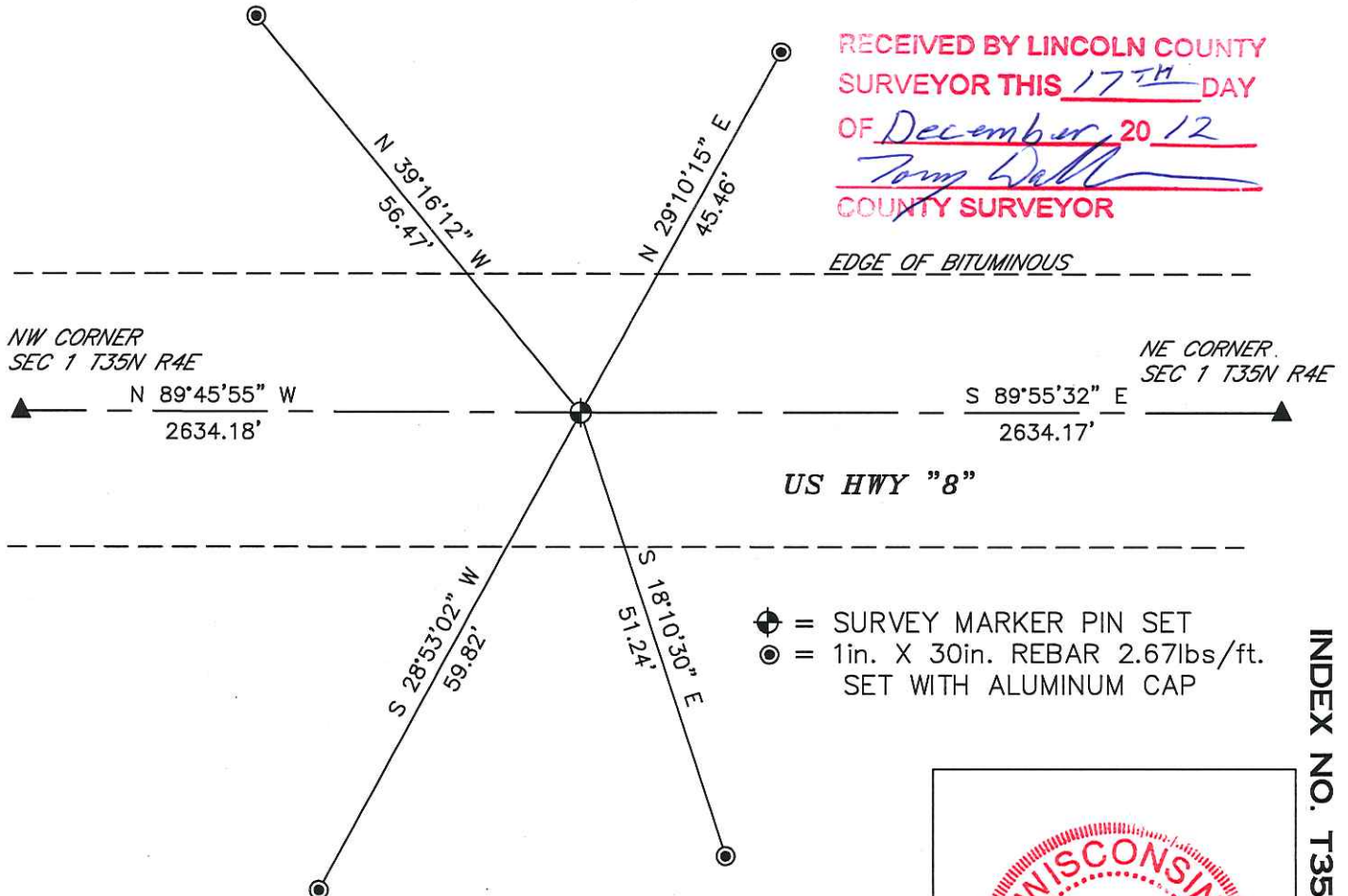
(b) HISTORY OF ORIGINAL CORNER:  
 ORIGINAL SURVEYOR: ALEX ANDERSON JULY 1864  
 TAMARAC 12 S 17° E 32 LINKS  
 CEDAR 8 N 39° E 7 LINKS

(f)(g)(h) DESCRIPTION OF MONUMENT FOUND AT THIS CORNER AND IF IT WAS ACCEPTED STATE ALL EVIDENCE (MATERIAL, TESTIMONIAL, OCCUPATIONAL, PLATS, RECORDS, OTHER MONUMENTS) USED AS A BASIS FOR ESTABLISHING LOCATION. IF REESTABLISHED THROUGH LOST CORNER PROPORTIONATE METHODS, INDICATE ALL MONUMENTS, DISTANCES, AND DIRECTIONS USED TO ESTABLISH. INDICATE TYPE OF MONUMENT AND SIGN POST FOUND OR SET.

26 SEPT. 1923 D.S. BURNETT; SET ¼ CORNER ON STRAIGHT LINE AND AT EQUIDISTANT OF 39.901/2 CHs. EACH WAY NOTHING TO MARK FOR BEARINGS

13 DECEMBER 2012; DETECTED METAL UNDER ROADWAY. EXCAVATED ±1' DOWN TO FIND CONCRETE TIE BAR IN ROADWAY. SET SURVEY MARK PIN AT MID POINT BETWEEN THE NE AND NW SECTION CORNERS AND ON CENTERLINE OF US HWY "8" AND FOUR NEW WITNESS MONUMENTS.

(c)(d)(e) PLAN VIEW OF CORNER WITH TIES TO AT LEAST FOUR WITNESSES. IF IN DISAGREEMENT WITH PREVIOUSLY ESTABLISHED CORNER, SHOW THE DISTANCE BETWEEN THE TWO CORNERS AND ALSO INDICATED THE TIE TO THE DISPUTED CORNER.



RECEIVED BY LINCOLN COUNTY  
 SURVEYOR THIS 17<sup>TH</sup> DAY  
 OF December, 20 12  
*Tom Dell*  
 COUNTY SURVEYOR

- = SURVEY MARKER PIN SET
- = 1in. X 30in. REBAR 2.67lbs/ft. SET WITH ALUMINUM CAP

I DARREN B. KRZANOWSKI, REGISTERED LAND SURVEYOR NO. 2663, HEREBY CERTIFY THAT THE CORNER LOCATION ON THIS RECORD WAS REFERENCED BY ME OR UNDER MY DIRECTION AND CONTROL AND THAT THIS U.S. PUBLIC LAND SURVEY MONUMENT RECORD IS COMPLETE TO THE BEST OF MY KNOWLEDGE AND BELIEF.

*Darren B. Krzanowski*

DARREN B. KRZANOWSKI RLS 2663  
 DATED THIS 14<sup>TH</sup> DAY OF DECEMBER, 2012



INDEX NO. T35N R4E A23









