

At \_\_\_\_\_ O'Clock \_\_\_\_\_ M  
**THOMAS H. LEIGHTON**  
REGISTER OF DEEDS  
Recorders Data

This form is intended to fulfill the requirements of Chapter A-E7.08 (3)(a) thru (i) U.S. Public Land Survey Monument Location Record, Wisconsin Administrative Code. Use the reverse side of form for continuation.

**U.S. PUBLIC LAND SURVEY MONUMENT LOCATION RECORD**

USPLS CORNER: SE SECTION: 35 TOWNSHIP: 36 NORTH RANGE: 4 EAST

NAME OF WATERWAY FOR M.C. CORNER : N/A SECTION LINE: N/A

~~(CITY)(VILLAGE)(TOWN) OF:~~ LYNNE COUNTY OF: ONEIDA

Description of monument found or placed and all other evidence used as the basis for monument location; including monuments and measurements required if the corner location was reestablished by lost corner proportionate methods. Also indicate name of the original surveyor, original survey date and the corner monument, bearing trees, witness or other reference monuments established, including measured bearing and distance ties, from available survey records.

In 1864, Alexander Anderson/GLO set a wood post as original section corner and noted OBT's: a 7" Hemlock N32°E 15 links; a 10" Hemlock S18°E 22 links; an 8" Bw N50°W 23 links and a 9" Hemlock S12°W 25 links; all are now obliterated.

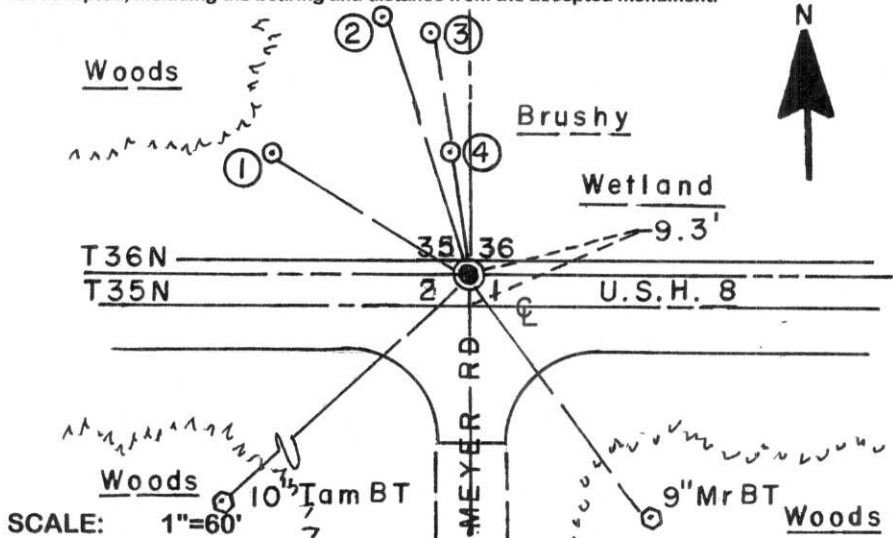
In 1991, Glen Barker/RLS 1682 indicates an 'X' in Highway 8 pavement at this corner and noted new witnesses: a standard aluminum monument with stamped Oneida County cap N60°W 72.27'; Power Pole N21°W 86.48'; 6" Mr S37°E 96.45' and a 6" Tamarack S47°W 119.75', per his USPLS Monument Location Record filed in Oneida County records.

On September 7, 2006 I found Barkers NW aluminum witness monument OK 1" above grade with a standard white poly 'T' marker post 9" North; found power pole NW with a bent over 40d spike with old flagging remnant in West face; found his SE BT as West trunk of a double 9" Mr with blue painted faintly scribed upper & lower blazes nearly shut and found his SW BT as a 10" Tamarack with upper & lower blazes shut but scars painted blue.

I did not chisel below the existing highway pavement overlay for the 'X' in concrete pavement, so I reset the corner with a 1/4" dia. by 2.5" long Mag nail into the pavement, using Barkers record tie distances, for new witness ties noted below.

This corner reestablished with approval of Oneida County Surveyor Michael Romportl. There were no direct witnesses.

Plan view map of monument location with bearing and distance ties to a minimum of four(4) described witness or reference monuments of concrete, natural stone, iron, live bearing trees or equivalent material. If applicable, also show a minimum of two(2) bearing and distance ties to any other monument found and not accepted; including the bearing and distance from the accepted monument.



**WITNESS MONUMENT TIES:**

- ① Older standard aluminum witness monument found with stamped Oneida County cap N58°W 72.27'.
- ② Replaced bent 40d spike in West face of power pole with a 40d concrete nail N18°W 86.48'.
- ③ 5/8" dia. by 24" long rebar set with yellow poly Reference Mark cap 2" up N10°W 76.02'.
- ④ Same rebar set N10°W 38.47'.

Reset standard white poly 'T' marker post 18.8" North of corner.

Unless otherwise indicated, all bearing tree ties are to a .25" dia. by 2.5" long PK nail with a 1.25" dia. steel washer driven into unblazed right face and a .25" dia. by 2.5" long PK nail with a 2" dia. steel washer stamped BT is also driven into unblazed face of bearing tree at DBH; the basis for measured bearings is by compass to nearest degree and all tie distances are measured horizontal by steel tape corrected to nearest 1/100th feet at standard temperature of 68° F.

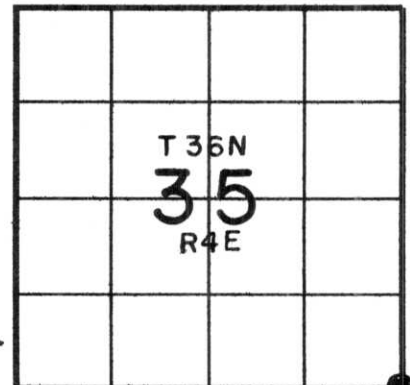
RLS SEAL:



LAND SURVEYOR CERTIFICATE:

I, William C. Rohde, hereby certify that I am duly licensed as a Professional Land Surveyor in the State of Wisconsin; that this USPLS monument location was determined by me and/or under my direct supervision and control; and that this U.S. Public Land Survey Monument Location Record is true and correct to the best of my knowledge and belief.

Signed: *William C. Rohde*  
William C. Rohde RLS 841



SECTION LOCATION MAP  
INDEX NO. \_\_\_\_\_

14-21

NE cr. 2-35-4

# U.S. PUBLIC LAND SURVEY MONUMENT RECORD

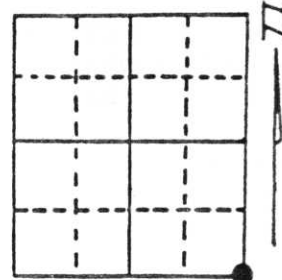
Note: This form is intended and designed to fulfill all requirements of Wisconsin Administrative Code, Chapter A-E 5.02, U.S. Public Land Survey Monument Record (3) (a) (b) (c) (d) (e) (f) (g) (h) (i). An additional sheet may be added if necessary to conform with said requirements.

(a) Corner location: Township 36 North

Range 4 East ~~West~~

Town/City/Village Lynne

County Oneida



Section 35

NE cr 2-35-4

(b) (f) (g) (h) Description of monument found at this corner and if it was accepted, state all evidence (material, testimonial, occupational, plats, records, other monuments) used as a basis for accepting. If not accepted or if nothing was found, state evidence used as basis for establishing location. If reestablished through lost corner proportionate methods, indicate all monuments, distances and directions used to establish.

Re-established Corner by retracement of V.A. Maine's survey of 1937 and D.O.T. Hwy "8" survey of 1945.

Ran from Northeast Section Corner to East 1/4 Corner Section 35, extended same alignment South at 2650.28' distance recorded of the North portion. Pointfalls 9.50' North of present centerline of U.S. Hwy "8". Ran from Southwest Section Corner of Section 35 to point set a distance of 5255.33'. In 1945 D.O.T. rebuilt this portion of U.S. Hwy "8" a recorded distance of 5255.00'; at this time they did not find the Southeast Section Corner of 35. Used old fence line North and centerline of town road South to fix a distance on the South line of Section 35.

The position re-established fits centerline of town road and recovered parts of old fence line North. Also V.A. Maine's field notes call to the Soo line railroad agrees within tolerance of our distance North of the Southeast Section Corner.

There is evidence of old fence running the total East line of Section 35, evident it was established on V.A. Maine's survey.

(c) (d) (e) Plan view of corner with ties to at least 4 witness monuments. If in disagreement with previously established corner, show the distances between the two corners and also indicate the ties to the disputed corner.

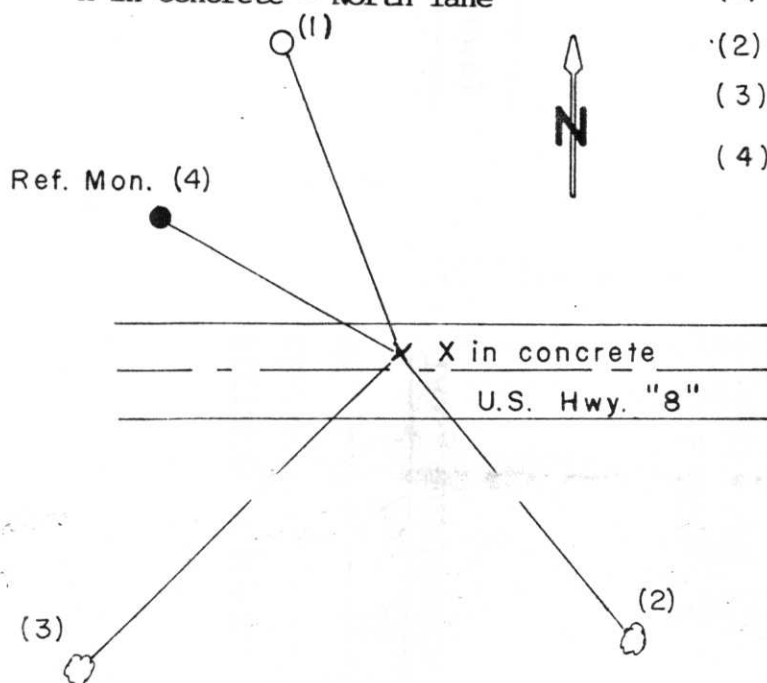
X in concrete - North lane

(1) Power Pole# 3604 35R1 30A N21°W 86.48'

(2) 6" Red Maple S37°E 96.45'

(3) 6" Tamarack S47°W 119.75'

(4) Ref. Mon. N60°W 72.27'



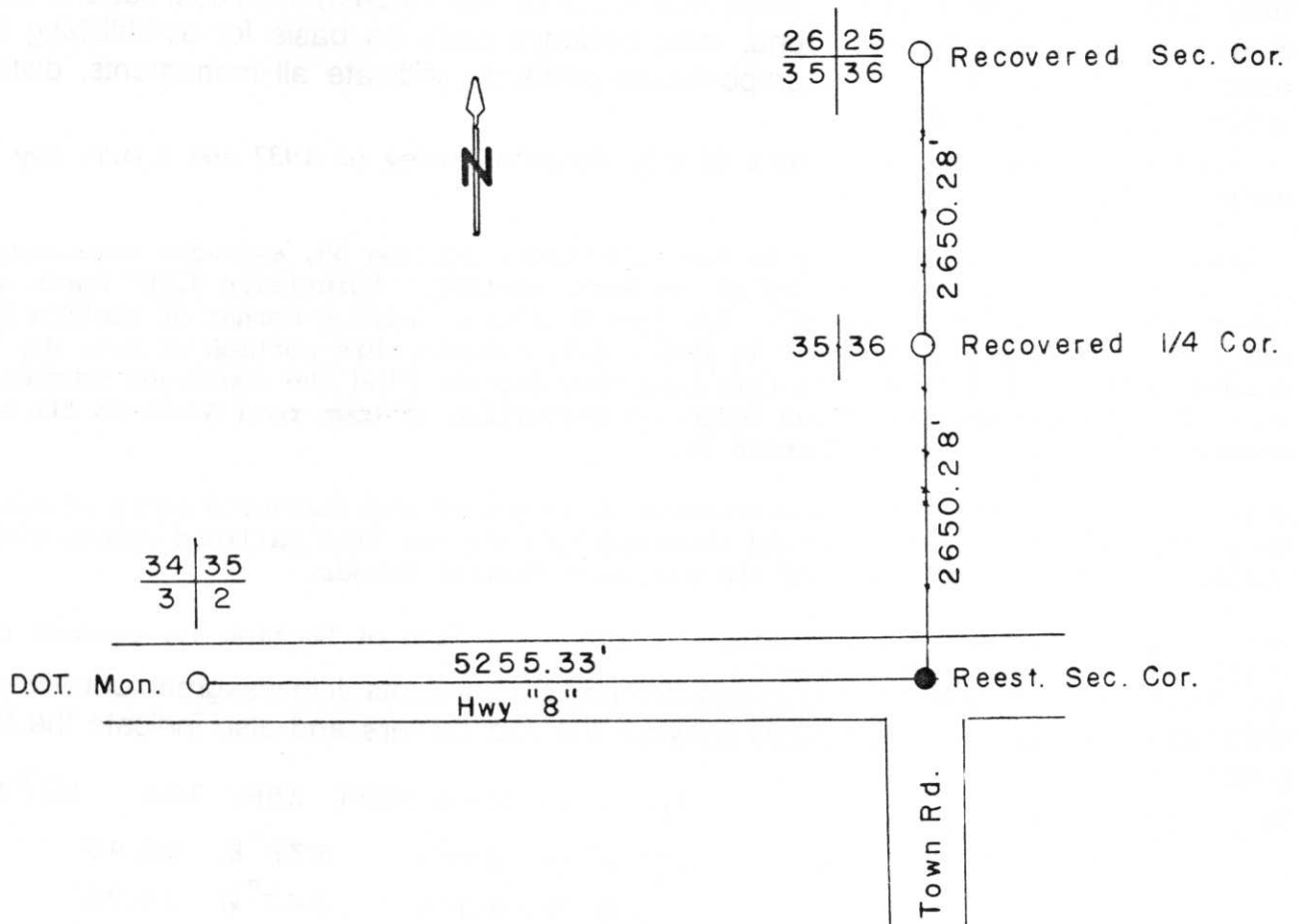
(i) I, Glen Barker

(type or print name) certify that the corner location on this record was determined by me or under my direction and control and that this U.S. Public Land Survey Monument Record is correct and complete to the best of my knowledge and belief.

Glen Barker Signature 11/4/91 Date

Index No. A-21

Original corner established by Alex Anderson, Gov't Deputy Surveyor in 1864, from which 7" Hemlock bears N32E, 15 lks., 8" Birch bears N50W, 23 lks., 10" Hemlock bears S18E, 22 lks and 9" Hemlock bears S12W, 25 lks.



REGISTER OF DEEDS OFFICE  
ONEIDA COUNTY, WIS.  
**FILED**  
DEC 16 1992  
At            O'Clock            M  
**THOMAS H. LEIGHTON**  
REGISTER OF DEEDS

RECEIVED AT LINCOLN COUNTY  
COURTHOUSE THIS 31st DAY  
OF Jan. 1992  
*Pat Fischer*  
TAX DESCRIPTION OFFICE