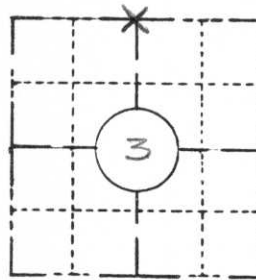


PRESERVATION OF LANDMARKS

(Pursuant to Section 59.635(7) Wisconsin Statutes)

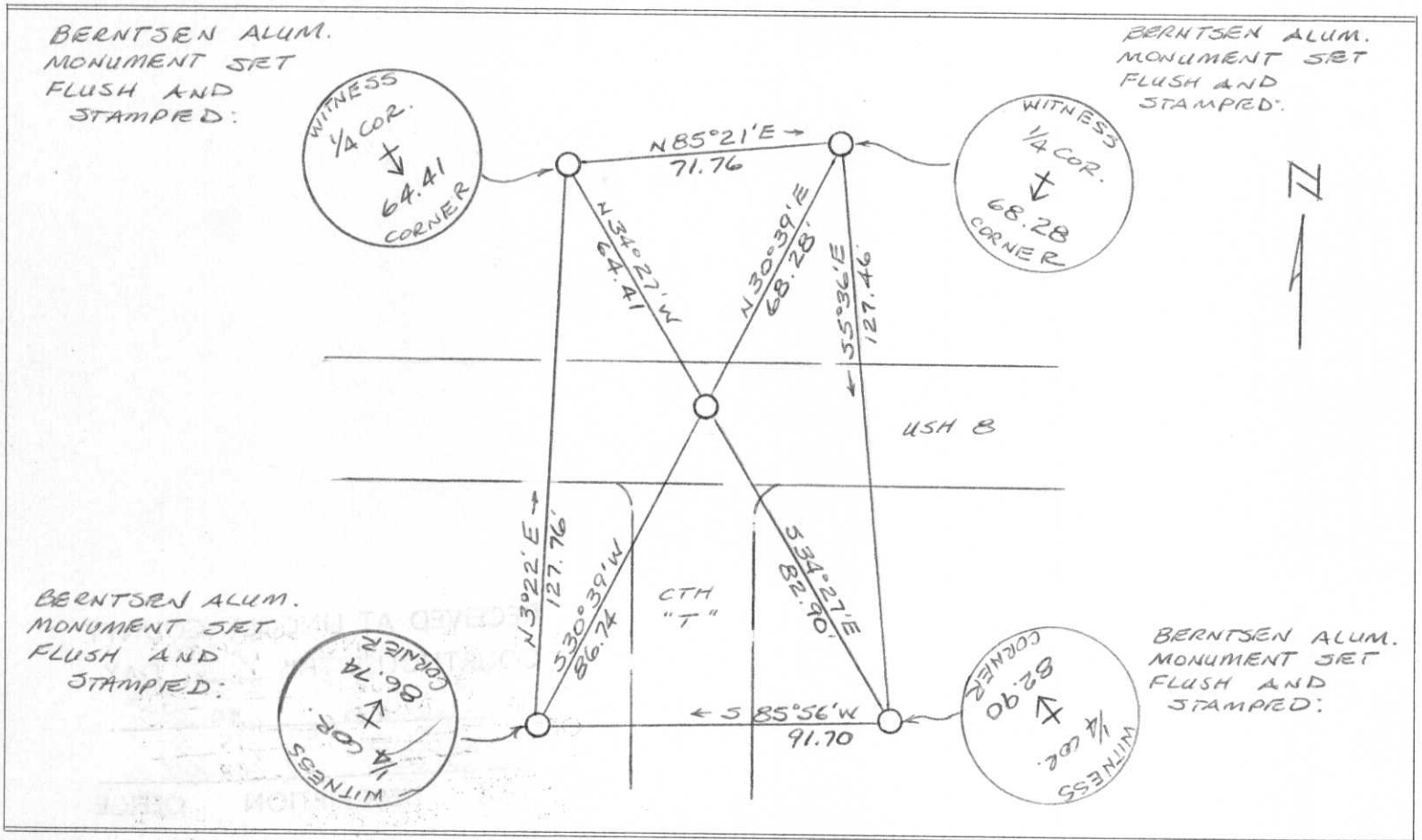
COUNTY LINCOLN		
TOWN SOMO		
HIGHWAY USH 8		
SECTION 3	TOWNSHIP T 35 N	RANGE R 4 E
TYPE OF LANDMARK		



LOCATION SKETCH
(Location of landmark indicated by "x")



This space for copy of field notes or ties to the above described landmarks



FILED UNDER PROJECT NUMBER 1580-06-00		
SHC DISTRICT OFFICE NUMBER 7	CITY Rhinelandsee	COUNTY ONEIDA
LOCATED OR ESTABLISHED BY NAME Jack Wallin		
TITLE Survey Crew Chief DATE 6/9/83		

COUNTY CLERK'S OFFICE	
COUNTY OF Lincoln	WISCONSIN } SS
DATE RECEIVED FOR RECORD 6/13/83	DATE COPY SENT TO COUNTY SURVEYOR 6/15/83
SIGNATURE OF COUNTY CLERK Ka. Oldenburg	

A-15

CERTIFIED LAND CORNER RESTORATION

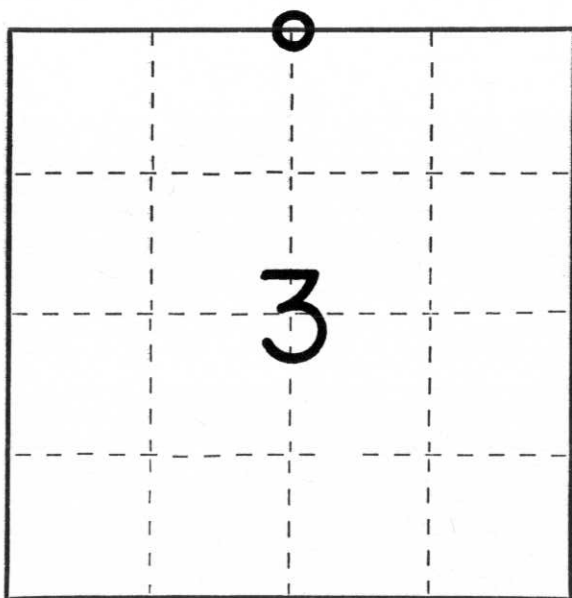
Index No. A-15

State of Wisconsin }
County of Lincoln } ss.

I Robert H. Winat, do hereby certify that on the 16th day of January, 1973 I found evidence of the North 1/4 corner of Section 3 Township 35, North, Range 4 East, Fourth, Principal Meridian, as described hereon; and that from this evidence I established a new monument and accessories as described hereon to perpetuate the ~~original~~ location of this corner.

Resident witnesses:

.....
.....
.....



○ = Corner monument restored.

History of original corner establishment:

Alex Andersen
July 1864
Wood stake set
10" Hemlock N79°E, 18 1k
14" Birch S30°W, 22 1k

Description of corner evidence found:

The intersection of U.S. Highway "8" and County Trunk Highway "T" was used to re-establish the corner as found by the Division of Highway's 1925 survey. This location checks well as D.S. Burnett's proportioned location of 1923. No other evidence of witnesses was found.

Description of monument and accessories I established to perpetuate the ~~original~~ location of this corner.

Berntsen monument 36" - 3' N. of centerline of U.S.H."8" at intersection of C.T.H."T"

Ties

PK and disc in 6" Maple N3°E, 71.65'
PK and disc in 7" Maple N39°W, 69.15'
PK and disc in 6" White Pine N67°W, 97.41'
PK and disc in 6" S.Maple S13°W, 146.45'
Peg-4" sq. conc., N10°W, 44.41'
benchmark monument

Dated at Minocqua, Wis., this 19th day of November, 1974

Signature Robert H. Winat Title Land Surveyor Registration No. S-1040
(County Surveyor, Registered Land Surveyor, or other duly authorized official)

Office of Register of Deeds, County of....., I hereby certify that the within instrument was filed in this office for record on the.....day of....., 19..... at.....o'clock..... M.

.....
(Register of Deeds)

By.....Deputy