

Recorders Data

This form is intended to fulfill the requirements of Chapter A-E7.08 (3)(a) thru (i) U.S. Public Land Survey Monument Location Record, Wisconsin Administrative Code. Use the reverse side of form for continuation.

U.S. PUBLIC LAND SURVEY MONUMENT LOCATION RECORD

USPLS CORNER: SE SECTION: 34 TOWNSHIP: 36 NORTH RANGE: 4 EAST
 NAME OF WATERWAY FOR M.C. CORNER : N/A SECTION LINE: N/A
 (CITY/VILLAGE/TOWN) OF: LYNNE COUNTY OF: ONEIDA

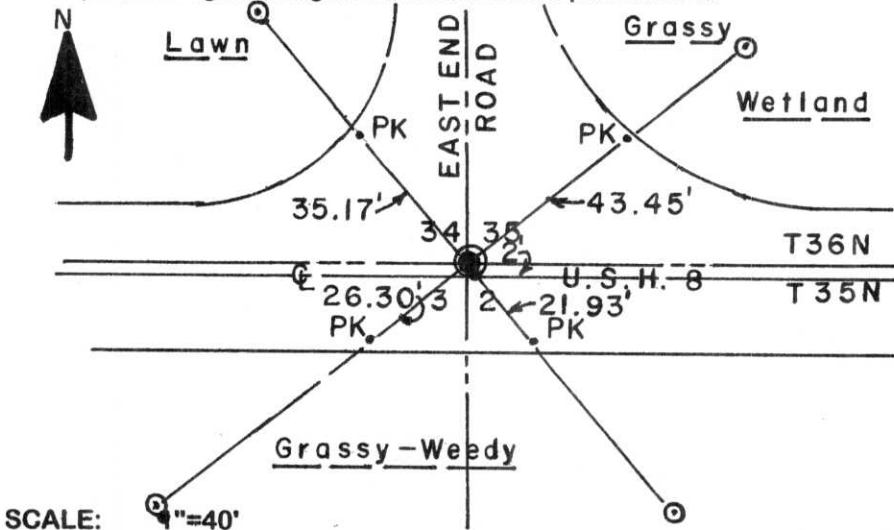
Description of monument found or placed and all other evidence used as the basis for monument location; including monuments and measurements required if the corner location was reestablished by lost corner proportionate methods. Also indicate name of the original surveyor, original survey date and the corner monument, bearing trees, witness or other reference monuments established, including measured bearing and distance ties, from available survey records.

In July 1864, Alexander Anderson/GLO set a wood post as this section corner and noted OBTs: a 15" Pw N50°E 48 links, a 14" Sb N70°W 62 links and a 5" Alder S20°W 5 links; all are now obliterated.

Robert H. Winat/RLS 1040 reestablished this corner as located by a Wisconsin Division of Highways survey in 1925 and set a standard Berntsen cast aluminum monument 2' North of the centerline of USH 8 at intersection with East End Road and noted witnesses: a road sign post N25°W 43.15; a PK spike in power pole N32°W 55.05', now gone; a nail in power pole N16°E 74.95', no nail found, and a PK spike in a double Elm N11°W 110.00', now gone, per his Certified Land Corner Restoration dated November 19, 1974. In June 1983, John Wallin, Wisconsin D.O.T survey crew chief filed a standard Preservation of Landmark form with the Oneida County Surveyor, with corner location references to a standard Berntsen cast aluminum monument set flush N40°34'W 77.94', N51°26'E 73.11', S40°34'E 67.47' and S51°26'W 84.29' on right lines thru corner monument location in USH 8, which I could not detect, so I reset the corner with a 1/4" dia. by 2.5" long Mag nail into existing highway pavement at the intersection of right lines between all 1983 witness monuments found OK at record measurements on September 6, 2006; there were no direct witnesses. I set a blaze orange wire stake flag at each witness monument. This corner rereferenced with approval of Oneida County Surveyor Michael Romportl.

In June 1991, Glen Barker/RLS 1682 noted an 'X' in concrete pavement at this corner per retracement survey of Section 35 filed as B-3036 in Oneida County survey records. I did not chisel out existing pavement to find in concrete pavement below as all 1983 Wisconsin D.O.T references found OK to verify corner location of record.

Plan view map of monument location with bearing and distance ties to a minimum of four(4) described witness or reference monuments of concrete, natural stone, iron, live bearing trees or equivalent material. If applicable, also show a minimum of two(2) bearing and distance ties to any other monument found and not accepted; including the bearing and distance from the accepted monument.



WITNESS MONUMENT TIES:

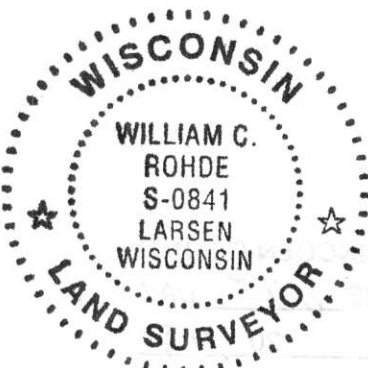
See foregoing narrative for four (4) cast aluminum monuments found OK per 1983 Preservation of Landmark record filed by Wisconsin D.O.T in Oneida County survey records.

No standard white poly 'T' marker post set near any witness monument due to subsurface soil conditions.

SCALE: 1"=40'

Unless otherwise indicated, all bearing tree ties are to a .25" dia. by 2.5" long PK nail with a 1.25" dia. steel washer driven into unblazed right face and a .25" dia. by 2.5" long PK nail with a 2" dia. steel washer stamped BT is also driven into unblazed face of bearing tree at DBH; the basis for measured bearings is by compass to nearest degree and all tie distances are measured horizontal by steel tape corrected to nearest 1/100th feet at standard temperature of 68° F.

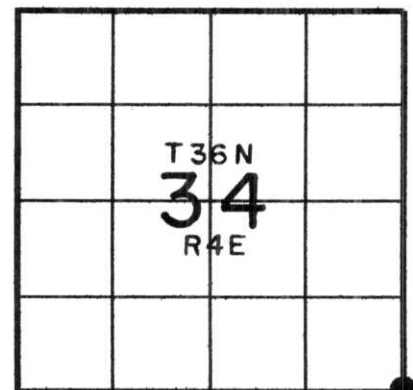
RLS SEAL:



LAND SURVEYOR CERTIFICATE:

I, William C. Rohde, hereby certify that I am duly licensed as a Professional Land Surveyor in the State of Wisconsin; that this USPLS monument location was determined by me and/or under my direct supervision and control; and that this U.S. Public Land Survey Monument Location Record is true and correct to the best of my knowledge and belief.

Signed: *William C. Rohde*
 William C. Rohde RLS 841



SECTION LOCATION MAP

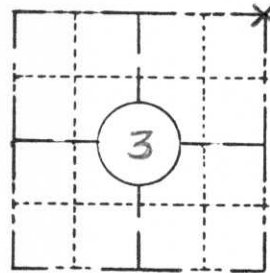
INDEX NO. _____

A-17

PRESERVATION OF LANDMARKS

(Pursuant to Section 59.635(7) Wisconsin Statutes)

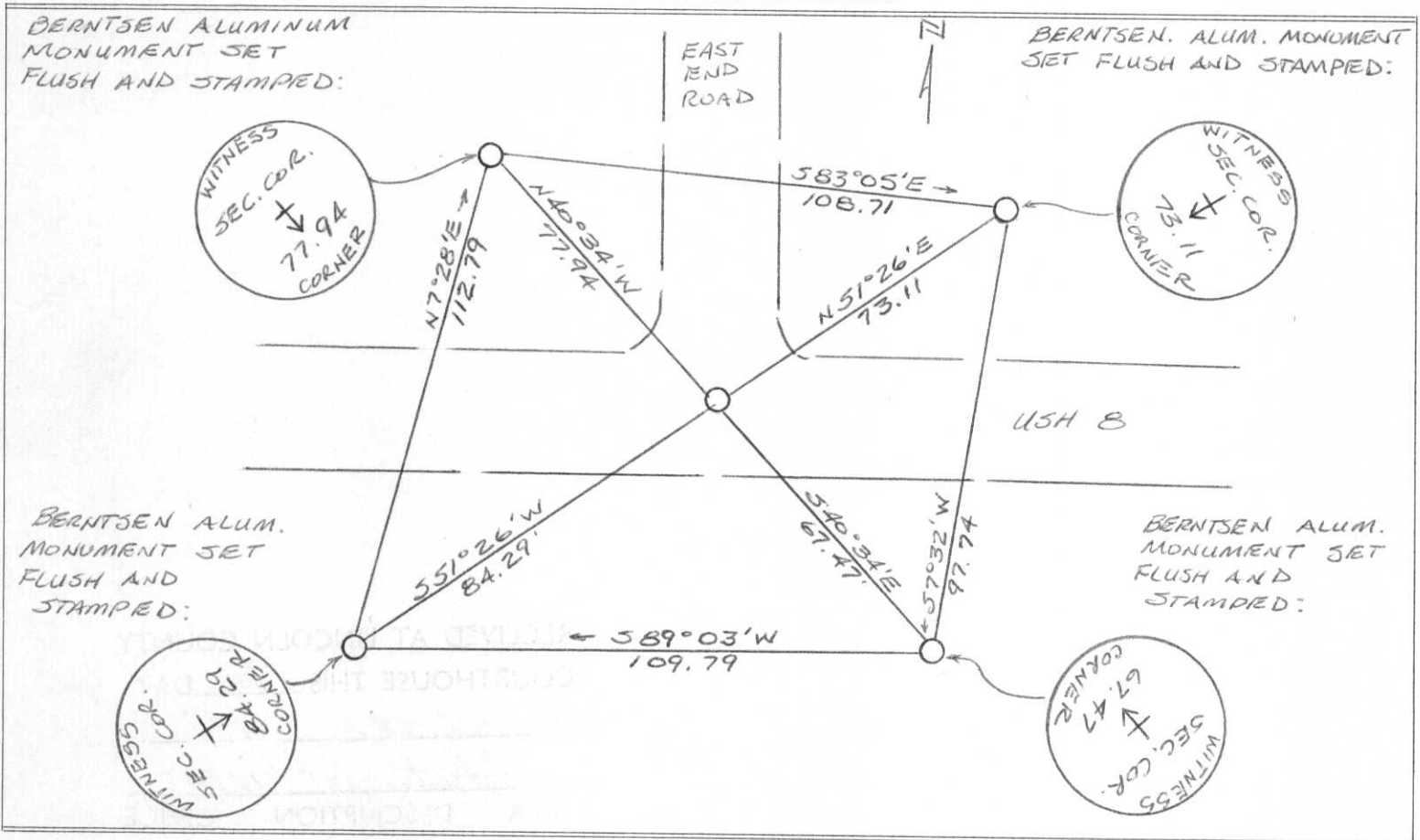
COUNTY LINCOLN		
TOWN Somo		
HIGHWAY USH 8		
SECTION 3	TOWNSHIP T 35 N	RANGE R 4 E
TYPE OF LANDMARK BERNTSEN ALUMINUM MONUMENT		



LOCATION SKETCH
(Location of landmark indicated by "x")



This space for copy of field notes or ties to the above described landmarks



FILED UNDER PROJECT NUMBER 1580-06-00			COUNTY CLERK'S OFFICE COUNTY OF Lincoln WISCONSIN } ss	
SHC DISTRICT OFFICE NUMBER 7	CITY Rhinelander	COUNTY ONEIDA	DATE RECEIVED FOR RECORD 6/13/83	DATE COPY SENT TO COUNTY SURVEYOR 6/16/83
LOCATED OR ESTABLISHED BY NAME JACK WALLIN			SIGNATURE OF COUNTY CLERK Ken Olsonberg	
TITLE Survey Crew Chief DATE 6/9/83				

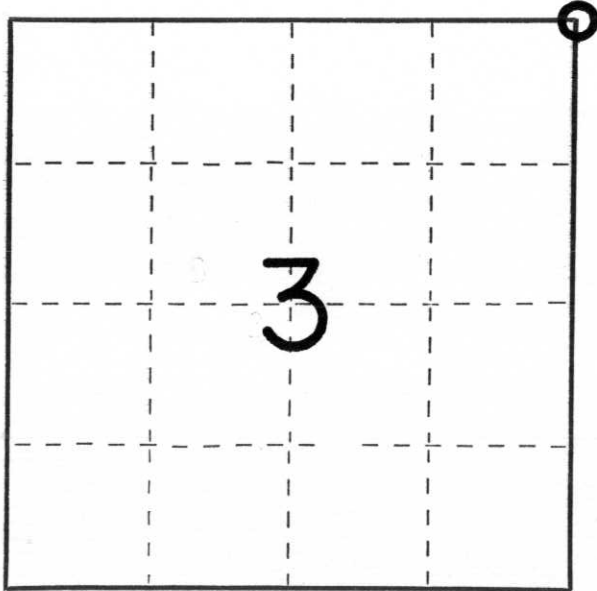
CERTIFIED LAND CORNER RESTORATION

Index No. A-17

State of Wisconsin }
County of Lincoln } ss.

I Robert H. Winat, do hereby certify that on the 17th day of January, 19 73, I found evidence of the Northeast corner of Section 3 Township 35, North, Range 4 East, Fourth, Principal Meridian, as described hereon; and that from this evidence I established a new monument and accessories as described hereon to perpetuate the original location of this corner.

Resident witnesses:



○ = Corner monument restored.

History of original corner establishment:

Alex Anderson
July 1864
Wood stake set
15" White Pine N50°W 48 lk
14" Spruce N70°W, 62 lk
5" Alder S20°W, 5 lk

Description of corner evidence found:

Corner re-established at the intersection of U.S. Highway "8" and the north-south town road locations by using the Division of Highway's 1925 survey information. This location appears to be D.S. Burnett's corner of 1923, i.e., A notch in the bridge abuttment wall, at the intersection of the centerlines of the roads.

Description of monument and accessories I established to perpetuate the original location of this corner.

Berntsen monument 36"
2.0' N. of centerline of U.S. Highway "8" at the intersection with E. End Road
Ties
Rd. sign post N25°W, 43.15'
PK in power pole N32°W, 55.05'
Nail in power pole N16°E, 74.95'
PK in Double Elm N11°W, 110.00'

Dated at Minosqua, Wis., this 19th day of November, 1974.

Signature Robert H. Winat Title land surveyor Registration No. 5-1090
(County Surveyor, Registered Land Surveyor, or other duly authorized official)

Office of Register of Deeds, County of _____, I hereby certify that the within instrument was filed in this office for record on the _____ day of _____, 19 _____ at _____ o'clock _____ M.

(Register of Deeds)

By _____ Deputy