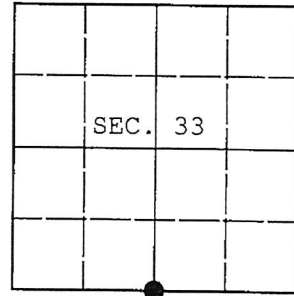


U.S. PUBLIC LAND SURVEY MONUMENT RECORD

Note: This form is intended and designed to fulfill all requirements of Wisconsin Administrative Code, Chapter A-E 7.08 U.S. Public Land Survey Monument Record (3) (a) (b) (c) (d) (e) (f) (g) (h) (i). An additional sheet may be added if necessary to conform with said requirements.

(a) CORNER LOCATION: WISCRS - Oneida County
 1/4 Cor. of Secs. 4 & 33 N: 134,838.01 USft
 Township 35 & 36 North E: 115,409.14 USft
 Range 4 East of the 4th P.M. Datum: NAD 1983(2011)
 Town of Lynne County of Oneida



(b) HISTORY OF ORIGINAL CORNER ESTABLISHMENT

Original Surveyor: _____ Original Accessories: _____
 Date of Survey: Commenced: _____
 Completed: _____

(b) (f) (g) (h) Description of monument found at this corner and if it was accepted, state all evidence (material, testimonial, occupational, plats, records, other monuments) used as a basis for accepting. If not accepted or if nothing was found, state evidence used as basis for establishing location. If re-established through lost corner proportionate methods, indicate all monuments, distances and directions used to establish. Indicate type of monument and sign post found or set.

NOTE: This is a perpetuation of a previous USPLS Monument Record by Matthew E. Hoglund, RLS dated October 12, 2006 and filed in the office of the Oneida County Register of Deeds. A complete history of the corner can be found on the previous monument record. I accept the previous location as a true and faithful perpetuation or reestablishment of the original corner location and further perpetuate it as follows.

April 3, 2016: I found and accepted a perpetuation of the record monument, a Berntsen "Survey Mark" nail in the Eastbound lane of U.S. Highway 8. The existing accessories were found in substantial agreement with the record and were not remeasured as the sole purpose of this work is to report the coordinates of the corner point.

The coordinates shown were derived from two independent RTK observations of the corner point and are referenced to the WISCORS GNSS Network.

(c) (d) (e) Plan view of corner with ties to at least 4 witness monuments. If in disagreement with previously established corner, show the distances between the two corners and also indicate the ties to the disputed.

REGISTER OF DEEDS OFFICE
 ONEIDA COUNTY
 FILED

DEC 28 2016

AT _____ O'CLOCK _____ M
 KYLE J. FRANSON
 REGISTER OF DEEDS

RECEIVED BY LINCOLN COUNTY
 SURVEYOR THIS 17TH DAY
 OF January 20 18

 COUNTY SURVEYOR



(i) I, Michael J. Romportl, Professional Land Surveyor No. S-1624, hereby certify that the corner location on this record was determined by me or under my direction and control and that this U.S. Public Land Survey Monument Record is correct and complete to the best of my knowledge and belief.

Michael J Romportl 12/23/2016
 Signature Date

A-11



U.S. PUBLIC LAND SURVEY MONUMENT RECORD

NOTE: This form is intended and designed to fulfill all requirements of Wisconsin Administrative Code, Chapter A-E 7.08 U.S. Public Land Survey Monument Record (3)(a)(b)(c)(d)(e)(f)(g)(h)(i). An additional sheet may be added if necessary to conform with said requirements.

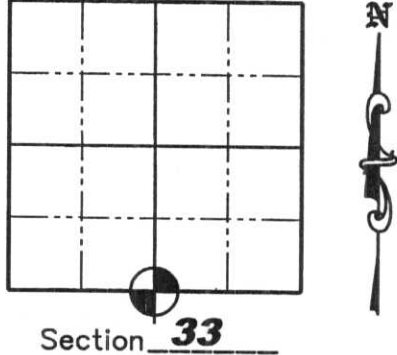
(a) Corner location: Township 36 North

Range 4 East

Town of LYNNE

County ONEIDA

Oneida County Northing 134838.138
Coordinates Easting 115409.128



Section 33

(b)(f)(g)(h) Description of monument found at this corner and if it was accepted, state all evidence (material, testimonial, occupation, plats, records, other monuments) used as a basis for accepting. If not accepted or if nothing was found, state evidence used as a basis for establishing location. If reestablished through lost corner proportionate methods, indicate all monuments, distances and directions used to establish. Indicate type of monument found or set and sign post.

7/1864- Alex Anderson, set wood post at 1/4 Section Corner. B.T.'s; Birch 10", N72°W 13lks; Hemlock 10", S48°W 18 lks.

1914- D.H. Vaughan identified corner as a 2 by 2 by 18 inch iron monument and made new BT's: W. Pine stump 36" North, 57 lks., Telephone Pole S4E 35.25lks.

9/24/1923- D.S. Burnett found BT's established by D.H. Vaughan for the 1/4 corner: Pine stump 36" North 57 lks., Telephone Pole S4E 35.25 lks. He dug for corner and found iron monument. HE set sew monument and set no new reference monuments.

01/15/1973- Robert H. Winat, RLS S-1040, found iron pipe in drill hole in concrete pavement from the Division of Highway's survey records. He verified this to be the location of D.H. Vaughn's 1914 Iron monument (said 2"x2"x18" stake of Vaughn was apparently reset 33.2 feet North of Burnett's Iron pipe, although Burnett does not state that he did same in 1923 re-survey). He set a 36" Berntsen monument 4' South of the centerline of U.S. Highway "8". Ties: NE corner foundation green and white house, (now a red and white), S52°W, 121.17', 9" Balsam PK/disc S33°E, 57.68', R/W post PK/disc North, 49.68', SE corner top step east entrance to tavern-grocery building (now torn down) N44°W, 65.85', 2" sq. X 18" iron pin North, 33.2' (1 foot below surface).

6/13/1983- Jack Wallin, Survey Crew Chief Wis. D.O.T., Shows the corner location in U.S. Hwy 8. Set 4 Berntsen Alum. Witness Monuments as follows; N01°45'E, 45.67'; N45°51'E, 67.54'; S48°47'E, 59.10'; S01°45'W, 45.08'.

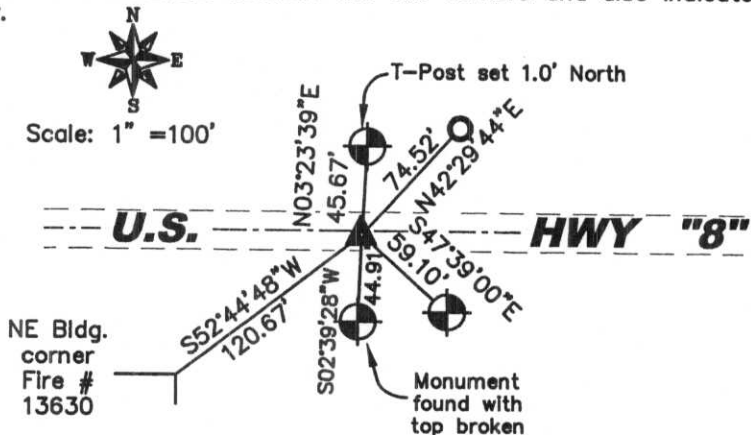
8/14/2006- Matthew E. Hoglund, R.L.S. S-1910, found 3 out of 4 D.O.T. aluminum witness monuments and the NE building corner and set a PK nail at the corner location as shown hereon. Oneida County coordinates determined from total station traverse from GPS pair surveyed by Jeff Austin R.L.S.

(c)(d)(e) Plan view of corner with ties to at least 4 witness monuments. If in disagreement with previously established corner, show the distances between the two corners and also indicate the ties to the disputed corner.

LEGEND

- D.O.T. Aluminum Reference Monument Found
- 3/4" x 24" Iron Rebar Set Weighing 1.50 lbs/lin ft.
- Set P.K. Nail

Project # 732



(i) I, Matthew E. Hoglund, certify that the corner location on this record was determined by me under my direction and control and that this U.S. Public Land Survey Monument is correct and complete to the best of my knowledge and belief.

RECEIVED BY LINCOLN COUNTY SURVEYOR THIS 19TH DAY OF April 20 07
Fony Wall
COUNTY SURVEYOR

Signature Matthew E. Hoglund Date 10/12/2006



Proj. #732

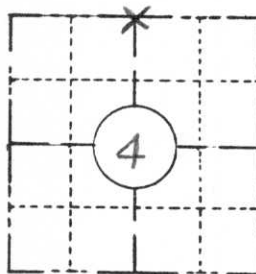
360422 0070

A-11

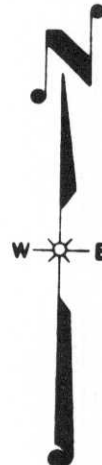
PRESERVATION OF LANDMARKS

(Pursuant to Section 59.635(7) Wisconsin Statutes)

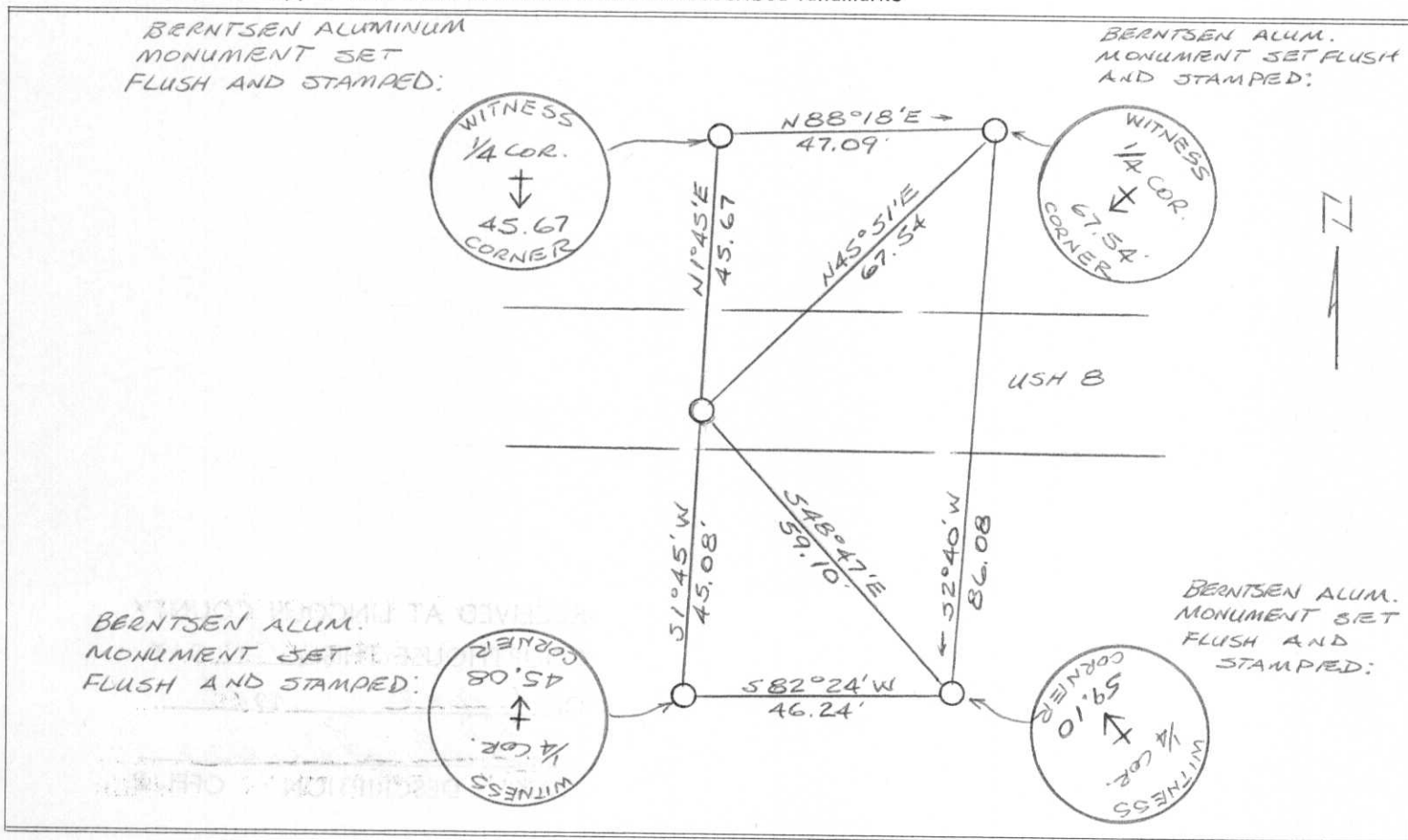
| | | |
|---|-------------------------|---------------------|
| COUNTY <i>LINCOLN</i> | | |
| TOWN <i>5000</i> | | |
| HIGHWAY <i>USH 8</i> | | |
| SECTION <i>4</i> | TOWNSHIP <i>T35N</i> | RANGE <i>R4E</i> |
| TYPE OF LANDMARK <i>BERNTSEN ALUMINUM MONUMENT</i> | | |



LOCATION SKETCH
(Location of landmark indicated by "x")



This space for copy of field notes or ties to the above described landmarks



| | | | | |
|---|----------------------------|-------------------------|--|---|
| FILED UNDER PROJECT NUMBER <i>1580-06-00</i> | | | COUNTY CLERK'S OFFICE COUNTY OF <i>Lincoln</i> WISCONSIN } SS | |
| SHC DISTRICT OFFICE NUMBER <i>7</i> | CITY <i>Rhinelander</i> | COUNTY <i>ONEIDA</i> | DATE RECEIVED FOR RECORD <i>6/13/83</i> | DATE COPY SENT TO COUNTY SURVEYOR <i>6/15/83</i> |
| LOCATED OR ESTABLISHED BY NAME <i>Jack Wallin</i> TITLE <i>Survey Crew Chief</i> DATE <i>6/9/83</i> | | | SIGNATURE OF COUNTY CLERK <i>Karl Ober...</i> | |

H-11

CERTIFIED LAND CORNER RESTORATION

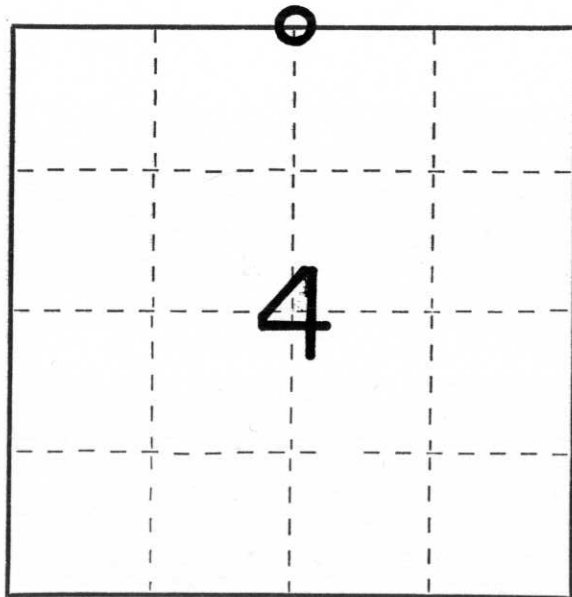
Index No. A-11

State of Wisconsin }
County of Lincoln } ss.

I Robert H. Winat, do hereby certify that on the 15 day of January, 19 73, I found evidence of the North 1/4 corner of Section 4 Township 35, North, Range 4 East, Fourth, Principal Meridian, as described hereon; and that from this evidence I established a new monument and accessories as described hereon to perpetuate the original location of this corner.

Resident witnesses:

Ted Meyer



○ = Corner monument restored.

History of original corner establishment:

Alex Andersen
July 1864
Wood post
10" Birch N72°W, 13 lk
10" Hemlock S48°W, 18 lk

Description of corner evidence found:

Iron pipe in drill hole in concrete pavt.
From the Division of Highway's survey records, this was verified to be the location of D.H. Vaughn's 1914 iron monument (said 2" x 2" x 18" iron stake of Vaughn was apparently reset 33.2 feet north of Burnett's iron pipe, although Burnett does not state that he did same in 1923 re-survey).

Description of monument and accessories I established to perpetuate the original location of this corner.

Berntsen monuments 36" - 4' south of centerline of U. S. Highway "8"
Ties
NE corner foundation green and white house S52°W, 121.17'
9" Balsam PK/disc S33°E, 57.68'
R/W post PK/disc North, 49.68'
SE corner top step east entrance to tavern-grocery building N44°W, 65.85'
2" sq. x 18" iron pin north, 33.2' (1 foot below surface)

Dated at Missouga, Wis., this 19th day of November, 1974.

Signature Robert H. Winat Title Land Surveyor Registration No. S-1040
(County Surveyor, Registered Land Surveyor, or other duly authorized official)

Office of Register of Deeds, County of _____, I hereby certify that the within instrument was filed in this office for record on the _____ day of _____, 19 _____ at _____ o'clock _____ M.

(Register of Deeds)

By _____ Deputy