

# U.S. PUBLIC LAND SURVEY MONUMENT RECORD FOR LINCOLN COUNTY, WISCONSIN

Note: This form is intended and designed to fulfill all requirements of Wisconsin Administrative Code, Chapter A-E 5.02, U.S. Public Land Survey Monument Record (3) (a) (b) (c) (d) (e) (f) (g) (h) (i). Use additional sheet if necessary.

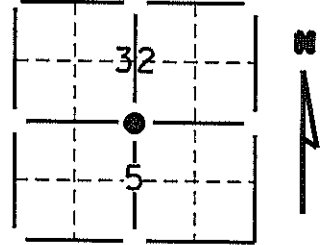
(a) The  section,  one quarter corner common to sections 32 & 5,

Township(s) 36 & 35 N, Range(s) 4 E

Lincoln County coordinates: N \_\_\_\_\_  
E \_\_\_\_\_

Town/City/Village Somo, Lynne

County Lincoln, Oneida



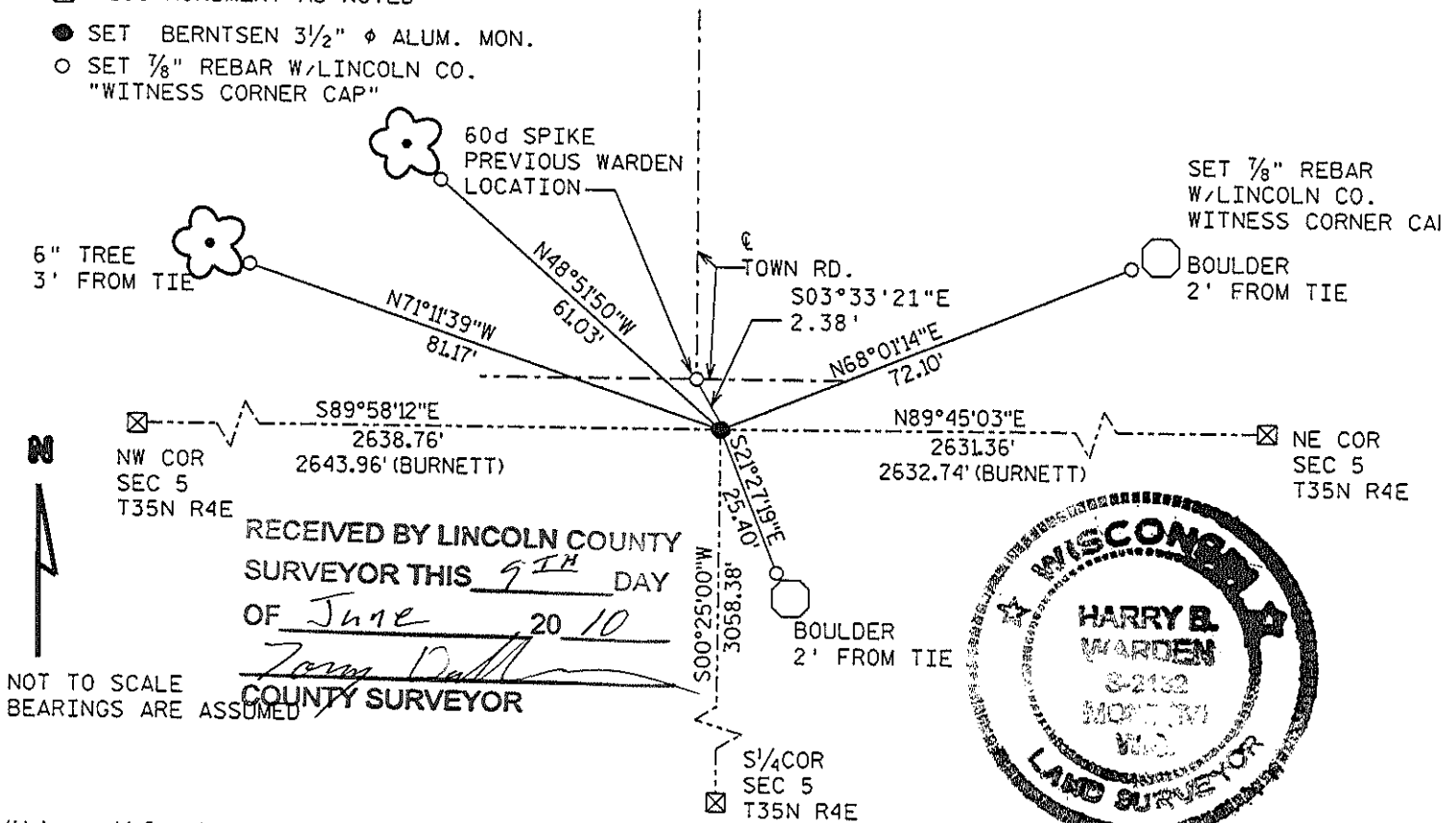
(b) (f) (g) (h) Description of monument found at this corner and if it was accepted, state all evidence (testimonial, occupational, plats, records, other monuments) used as a basis for accepting. If not accepted or nothing was found, state evidence used as a basis for establishing location and what was set. If reestablished through lost corner proportionate methods, indicate all monuments, distances and directions used.

EXCAVATED AT INTERSECTION OF TOWN ROADS. FOUND A LARGE IRON MONUMENT (RR BRAKE SHOE?) APPROXIMATELY 2' BELOW GRADE, AND 2' SOUTH AND 1' EAST OF  $\frac{1}{4}$ - $\frac{1}{4}$  TOWN ROADS. DISTANCES TO SECTION CORNERS EAST & WEST FIT RECORD MEASUREMENTS WELL. ACCEPTED AS CORNER LOCATION.

(c) (d) (e) Plan view of corner with ties to a least 4 witness monuments. If in disagreement with previously established corner, show the distances between the two corners and also indicated ties to disputed corner.

**LEGEND:**

- PLSS MONUMENT AS NOTED
- SET BERNTSEN 3 1/2"  $\phi$  ALUM. MON.
- SET 7/8" REBAR W/LINCOLN CO. "WITNESS CORNER CAP"



NOT TO SCALE  
BEARINGS ARE ASSUMED

RECEIVED BY LINCOLN COUNTY  
SURVEYOR THIS 9<sup>TH</sup> DAY  
OF June 20 10  
*Tom Dull*  
COUNTY SURVEYOR



(i) I certify that the corner location on this record was determined by me or under my direction and control and that this U.S. Public Land Survey Monument Record is correct and complete to the best of my knowledge and belief.

Harry B. Warden  
Signature

6.8.2010  
Date

INDEX # A-7

Filed for record in Lincoln County Surveyor's Office on \_\_\_\_\_ Date

# U.S. PUBLIC LAND SURVEY MONUMENT RECORD FOR LINCOLN COUNTY, WISCONSIN

Note: This form is intended and designed to fulfill all requirements of Wisconsin Administrative Code, Chapter A-E 5.02, U.S. Public Land Survey Monument Record (3) (a) (b) (c) (d) (e) (f) (g) (h) (i). Use additional sheet if necessary.

(a) The  section,  one quarter corner common to sections 5 & 32,

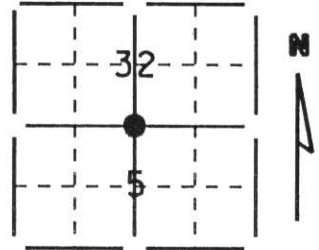
Township(s) 35 & 36 N, Range(s) 4 E

State plane coordinates: N \_\_\_\_\_

S \_\_\_\_\_

Town/City/Village Somo

County Lincoln

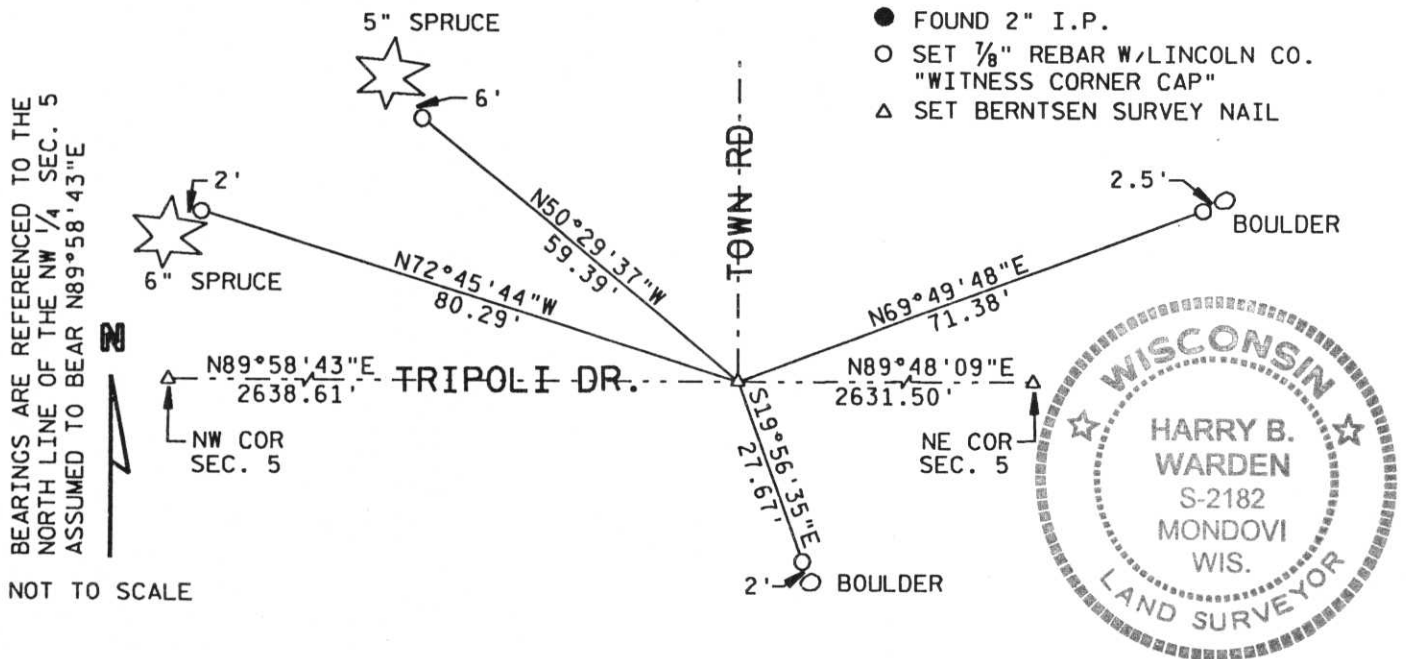


(b) (f) (g) (h) Description of monument found at this corner and if it was accepted, state all evidence (testimonial, occupational, plats, records, other monuments) used as a basis for accepting. If not accepted or nothing was found, state evidence used as a basis for establishing location and what was set. If reestablished through lost corner proportionate methods, indicate all monuments, distances and directions used.

Set Berntsen Survey Nail at occupied centerlines of Tripoli drive & town road to the north. Record distance south to  $\pm$  U.S.H. 8 fit 4"  $\pm$ . Distances to occupied location of the NW cor. & re-established corner NE cor. of Sec. 5 matched fairly well. Frost conditions prevented excavation, so location is tentative until excavation can done.

**RECEIVED AT LINCOLN COUNTY  
COURTHOUSE THIS 19 DAY  
OF Dec 1995  
*Pat Reule*  
TAX DESCRIPTION OFFICE**

(c) (d) (e) Plan view of corner with ties to a least 4 witness monuments. If in disagreement with previously established corner, show the distances between the two corners and also indicated ties to disputed corner.



(i) I certify that the corner location on this record was determined by me or under my direction and control and that this U.S. Public Land Survey Monument Record is correct and complete to the best my knowledge and belief.

*Harry B. Warden*  
Signature

December 19, 1995  
Date

INDEX # A-7

Filed for record in Lincoln County Surveyor's Office on \_\_\_\_\_ Date