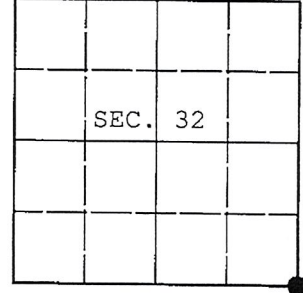


**U.S. PUBLIC LAND SURVEY MONUMENT RECORD**

Note: This form is intended and designed to fulfill all requirements of Wisconsin Administrative Code, Chapter A-E 7.08 U.S. Public Land Survey Monument Record (3) (a) (b) (c) (d) (e) (f) (g) (h) (i). An additional sheet may be added if necessary to conform with said requirements.

(a) CORNER LOCATION: WISCRS - Oneida County  
 Cor. of Secs. 4, 5, 32 & 33 N: 134,865.08 USft  
 Township 35 & 36 North E: 112,766.41 USft  
 Range 4 East of the 4th P.M. Datum: NAD 1983(2011)  
 Town of Lynne County of Oneida



(b) HISTORY OF ORIGINAL CORNER ESTABLISHMENT

Original Surveyor: \_\_\_\_\_ Original Accessories: \_\_\_\_\_  
 Date of Survey: Commenced: \_\_\_\_\_  
 Completed: \_\_\_\_\_

(b) (f) (g) (h) Description of monument found at this corner and if it was accepted, state all evidence (material, testimonial, occupational, plats, records, other monuments) used as a basis for accepting. If not accepted or if nothing was found, state evidence used as basis for establishing location. If re-established through lost corner proportionate methods, indicate all monuments, distances and directions used to establish. Indicate type of monument and sign post found or set.

NOTE: This is a perpetuation of a previous USPLS Monument Record by Matthew E. Hoglund, RLS dated October 12, 2006 and filed in the office of the Oneida County Register of Deeds. A complete history of the corner can be found on the previous monument record. I accept the previous location as a true and faithful perpetuation or reestablishment of the original corner location and further perpetuate it as follows.

April 3, 2016: I found and accepted a perpetuation of the record monument, a Berntsen "Survey Mark" nail 1 ft. North of the centerline of U.S. Highway 8. The existing accessories were found in substantial agreement with the record and were not remeasured as the sole purpose of this work is to report the coordinates of the corner point.


The coordinates shown were derived from two independent RTK observations of the corner point and are referenced to the WISCORS GNSS Network.

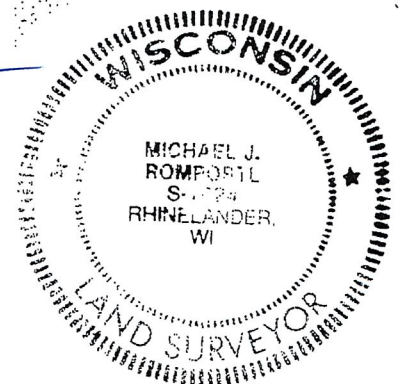
(c) (d) (e) Plan view of corner with ties to at least 4 witness monuments. If in disagreement with previously established corner, show the distances between the two corners and also indicate the ties to the disputed.

REGISTER OF DEEDS OFFICE  
 ONEIDA COUNTY  
 FILED

DEC 28 2016

AT \_\_\_\_\_ O'CLOCK \_\_\_\_\_ M  
 KYLE J. FRANSON  
 REGISTER OF DEEDS

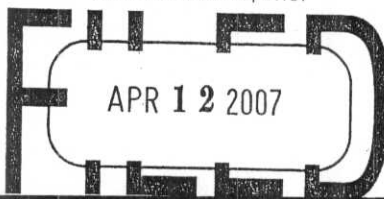
RECEIVED BY LINCOLN COUNTY  
 SURVEYOR THIS 17<sup>TH</sup> DAY  
 OF January 20 18  
  
 COUNTY SURVEYOR



(i) I, Michael J. Romportl, Professional Land Surveyor No. S-1624, hereby certify that the corner location on this record was determined by me or under my direction and control and that this U.S. Public Land Survey Monument Record is correct and complete to the best of my knowledge and belief.

Michael J Romportl 12/23/2016  
 Signature Date

A-9



At \_\_\_\_\_ O'Clock \_\_\_\_\_ M  
REGISTER OF DEEDS  
**U.S. PUBLIC LAND SURVEY MONUMENT RECORD**

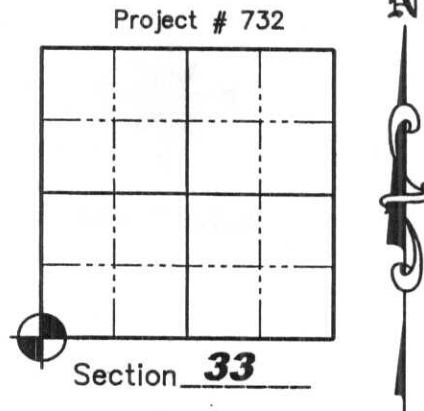
NOTE: This form is intended and designed to fulfill all requirements of Wisconsin Administrative Code, Chapter A-E 7 .08 U.S. Public Land Survey Monument Record (3)(a)(b)(c)(d)(e)(f)(g)(h)(i). An additional sheet may be added if necessary to conform with said requirements.

(a) Corner location: Township 36 North  
Range 4 East

Town of LYNNE

County ONEIDA

Oneida County Northing 134865.217  
Coordinates Easting 112766.405



(b)(f)(g)(h) Description of monument found at this corner and if it was accepted, state all evidence (material, testimonial, occupation, plats, records, other monuments) used as a basis for accepting. If not accepted or if nothing was found, state evidence used as a basis for establishing location. If reestablished through lost corner proportionate methods, indicate all monuments, distances and directions used to establish. Indicate type of monument found or set and sign post.

7/1864- Alex Anderson, set wood post at Section Corner. B.T.'s; Hemlock 10", N50°W 19lks; Hemlock 10", N55°E 47 lks.; Hemlock 9", S10°E, 10 lks.; Hemlock 9", S33°W, 27 lks.

6/1/1905- D.H. Vaughan ran East from S 1/4 Corner of Section 32 and fell 1/2 link from corner which he set in road from SE B.T. ( a stub 6 feet high marks plain) and stump of NE B.T.; New B.T.'s set: W. pine stump 34" S76°E, 33 lks, Hemlock stump 24" S37°W 64.25 lks.

11/1/1914- D.H. Vaughan found an iron monument ran East.

8/21/1916- D.H. Vaughan found an iron monument 2" by 2" by 18" in center of road and ran North.

9/24/1923- D.S. Burnett ran West from S 1/4 corner of Section 33, 39.99 Chains and found all B.T.'s gone, but a 2" by 2" by 18" iron monument at the intersection of highways in place. He set a new monument for the corner and took bearings to the following: East face of North wing wall of culvert N86°10'W, 1.42 1/4 chains; NW corner of foundation under main building of Town Hall, S27°35'E, 1.27 Chains

01/15/1973- Robert H. Winat, RLS S-1040, re-established corner from the iron pin set 33 feet North by the Division of Highways and A.W. Kordick, Lincoln Co. Surveyor in 1945, even though this location was about 4 feet longer than D.S. Burnett's from the North one-quarter corner of Section 4. The corner fits the road intersections and Burnett's ties to the ditch and Town Hall building. Set 36" Lincoln Co. Berntsen Monument 1' North of centerline of U.S. Hwy "8". Ties: PK & disk in 15" Elm N19°E, 75.55'; PK & disc in 6" White Birch N28°W, 75.18'; 1-1/8" dia. iron bar N05°W, 33.00'; L-mark on NE corner North end concrete box culvert N74°W, 98.84'; L-mark on SE corner South end concrete box culvert S67°W, 98.80'; concrete block corner at metal siding Northwest corner Town garage building S34°E, 102.62'.

12/19/1995- Harry B. Warden, RLS S-2182, found no monument at corner location and re-established corner using record dimension from corner of town shop and distance stamped on WDOT Reference Monument Southwest. He set a Berntsen Survey Nail and set 7/8" rebar with Lincoln County aluminum caps for witness monuments: N02°38'06"W, 64.45', N63°23'02"E, 97.60' and S36°57'25"E, 67.24'

8/24/2006- Matthew E. Høglund, R.L.S. S-1910, found D.O.T. aluminum witness monument, 2 of the 3 Lincoln County Witness Monuments and the NW building corner. We set a PK nail at corner location as shown on Sheet 2 hereof. Oneida County coordinates determined from total station traverse from GPS pair surveyed by Jeff Austin R.L.S.

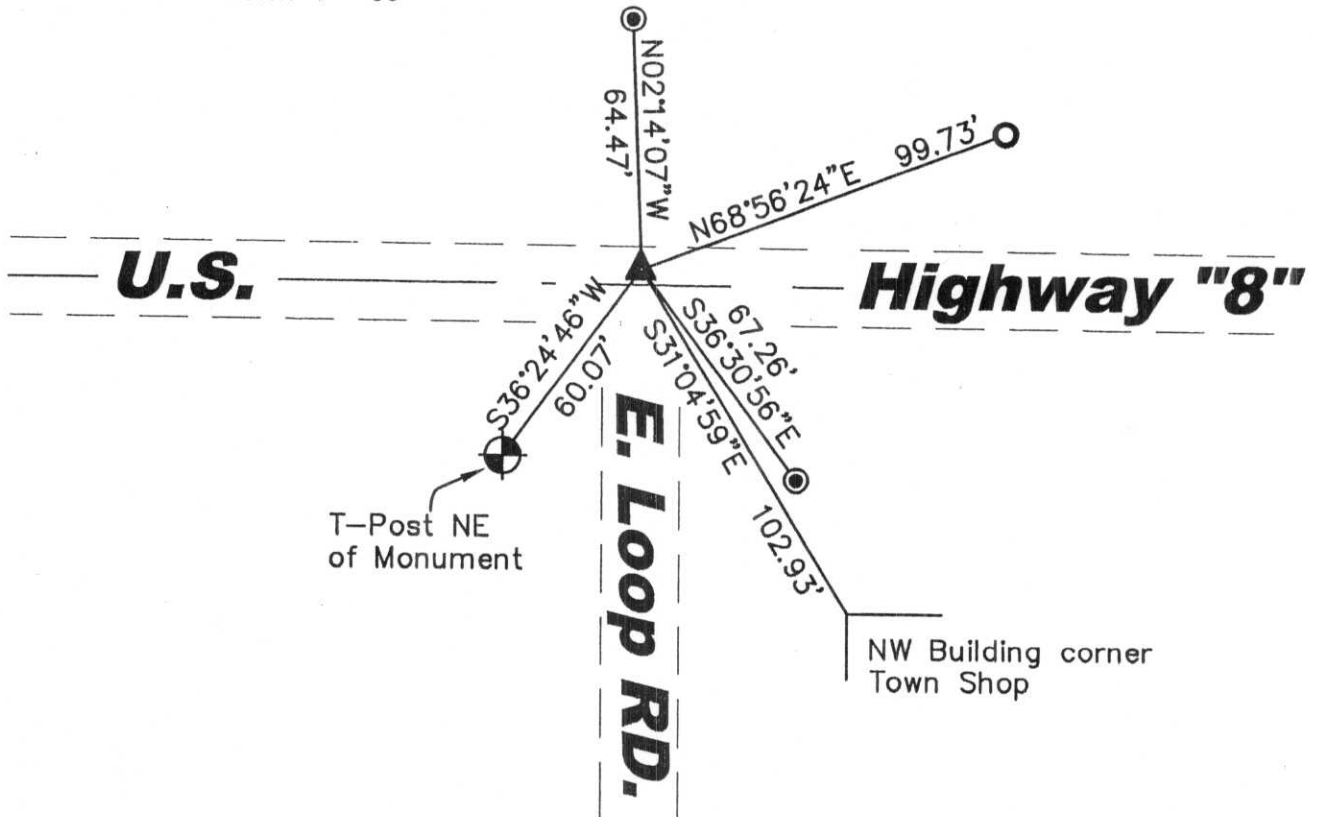
A-9

# U.S. PUBLIC LAND SURVEY MONUMENT RECORD

(c)(d)(e) Plan view of corner with ties to at least 4 witness monuments. If in disagreement with previously established corner, show the distances between the two corners and also indicate the ties to the disputed corner.



Scale: 1" = 50'



## LEGEND

- ▲ Set P.K. Nail
- 3/8" Iron Rebar Found
- Aluminum Capped 7/8" Iron Rebar Reference Mon. Found
- ⊕ D.O.T. Aluminum Reference Mon. Found

RECEIVED BY LINCOLN COUNTY  
 SURVEYOR THIS 19<sup>TH</sup> DAY  
 OF April 20 07  
Zony Deller  
 COUNTY SURVEYOR

(i) I, Matthew E. Hoglund, certify that the corner location on this record was determined by me under my direction and control and that this U.S. Public Land Survey Monument is correct and complete to the best of my knowledge and belief.

Signature *Matthew E. Hoglund* Date 10/12/2006

Sheet 2 of 2

Proj. # 732

360432 00 00



# U.S. PUBLIC LAND SURVEY MONUMENT RECORD FOR LINCOLN COUNTY, WISCONSIN

Note: This form is intended and designed to fulfill all requirements of Wisconsin Administrative Code, Chapter A-E 5.02, U.S. Public Land Survey Monument Record (3) (a) (b) (c) (d) (e) (f) (g) (h) (i). Use additional sheet if necessary.

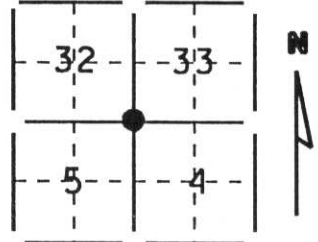
(a) The  section,  one quarter corner common to sections 4, 5, 32 & 33,

Township(s) 35 & 36 N, Range(s) 4 E

State plane coordinates: N \_\_\_\_\_  
S \_\_\_\_\_

Town/City/Village Somo, Lynne

County Lincoln, Oneida

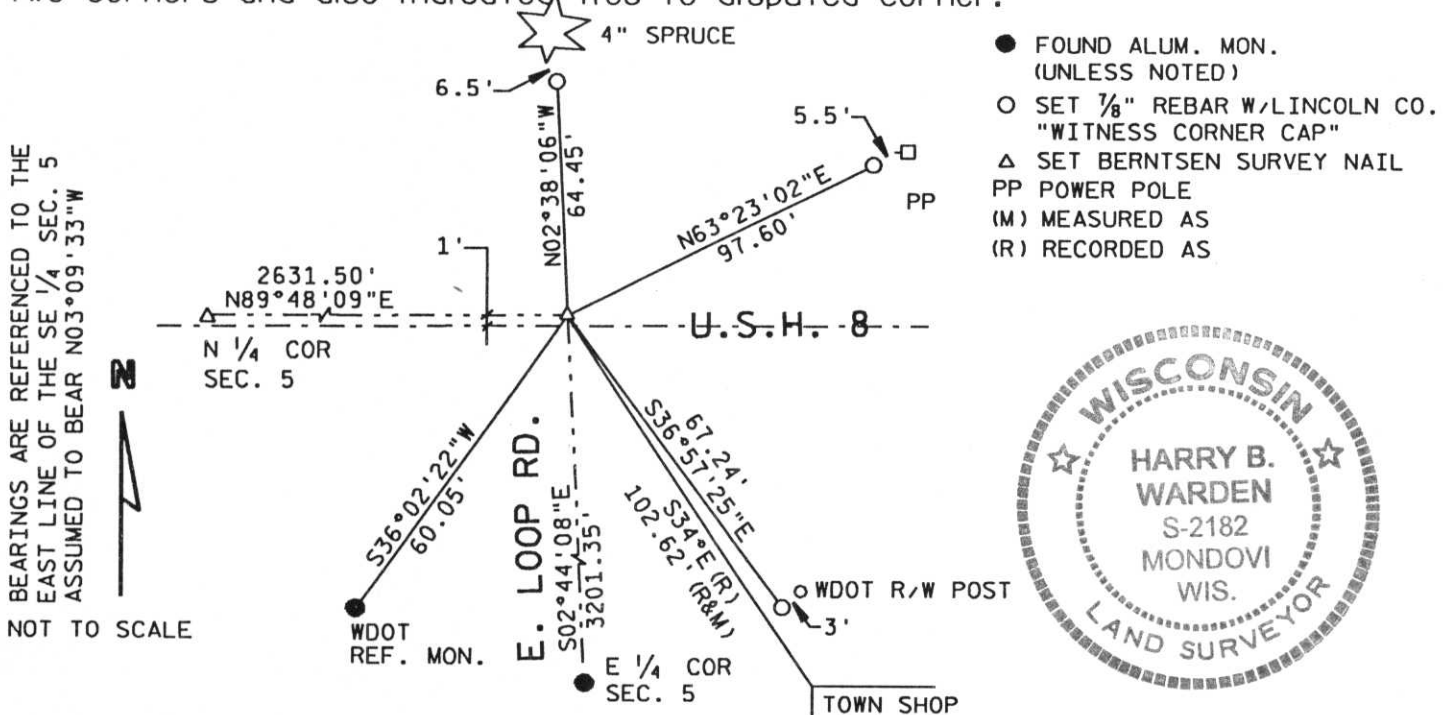


(b) (f) (g) (h) Description of monument found at this corner and if it was accepted, state all evidence (testimonial, occupational, plats, records, other monuments) used as a basis for accepting. If not accepted or nothing was found, state evidence used as a basis for establishing location and what was set. If reestablished through lost corner proportionate methods, indicate all monuments, distances and directions used.

No monument was found at corner location. Corner was re-established using record dimension from corner of town shop & distance stamped on WDOT Reference Monument Southwest. A Berntsen Survey Nail was set.

**RECEIVED AT LINCOLN COUNTY  
COURTHOUSE THIS 19 DAY  
OF Dec 1995  
*Pat Quiles*  
TAX DESCRIPTION OFFICE**

(c) (d) (e) Plan view of corner with ties to a least 4 witness monuments. If in disagreement with previously established corner, show the distances between the two corners and also indicated ties to disputed corner.



BEARINGS ARE REFERENCED TO THE EAST LINE OF THE SE 1/4 SEC. 5 ASSUMED TO BEAR N03°09'33\"/>

- FOUND ALUM. MON. (UNLESS NOTED)
- SET 1/8\"/>



(i) I certify that the corner location on this record was determined by me or under my direction and control and that this U.S. Public Land Survey Monument Record is correct and complete to the best my knowledge and belief.

Harry B. Warden  
Signature

December 19, 1995  
Date

INDEX # A-9

Filed for record in Lincoln County Surveyor's Office on \_\_\_\_\_ Date

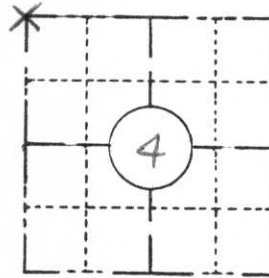
FIELD SURVEY NOTES

**PRESERVATION OF LANDMARKS**

(Pursuant to Section 59.635(7) Wisconsin Statutes)

Wisconsin Department of Transportation  
E-D-707-87

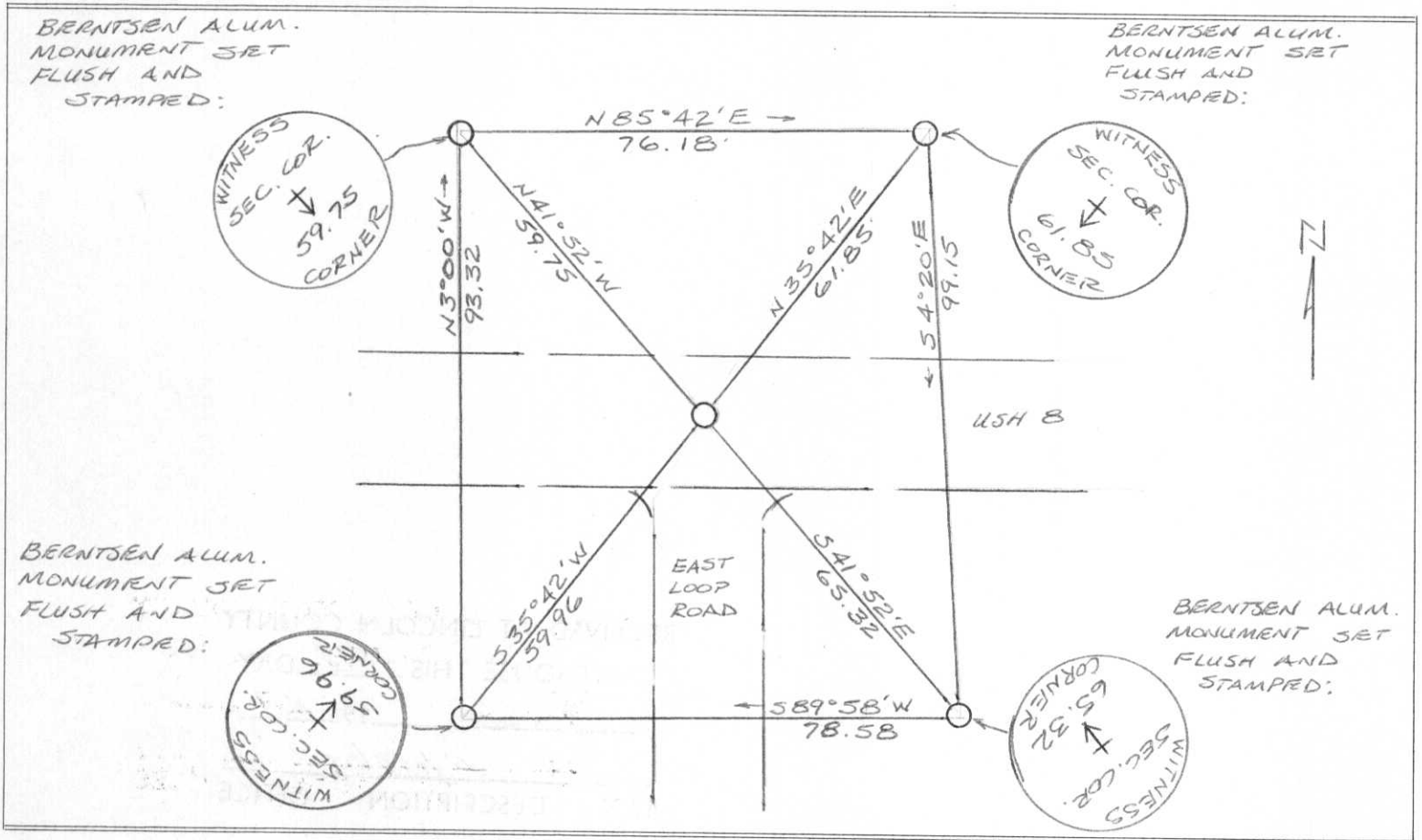
COUNTY <i>LINCOLN</i>		
TOWN <i>SOMO</i>		
HIGHWAY <i>USH 8</i>		
SECTION <i>4</i>	TOWNSHIP <i>T35N</i>	RANGE <i>R4E</i>
TYPE OF LANDMARK <i>BERNTSEN ALUMINUM MONUMENT</i>		



**LOCATION SKETCH**  
(Location of landmark indicated by "x")



This space for copy of field notes or ties to the above described landmarks



FILED UNDER PROJECT NUMBER <i>1580-06-00</i>			COUNTY CLERK'S OFFICE		
SHC DISTRICT OFFICE NUMBER <i>7</i>		CITY <i>Rhinelandee</i>	COUNTY <i>ONEIDA</i>	COUNTY OF	WISCONSIN } SS
LOCATED OR ESTABLISHED BY NAME <i>Sack Wallin</i>			DATE RECEIVED FOR RECORD <i>6/13/83</i>	DATE COPY SENT TO COUNTY SURVEYOR <i>6/15/83</i>	
TITLE <i>Survey Crew Chief</i> DATE <i>6/9/83</i>			SIGNATURE OF COUNTY CLERK <i>Ken Dela Cruz</i>		

CERTIFIED LAND CORNER RESTORATION

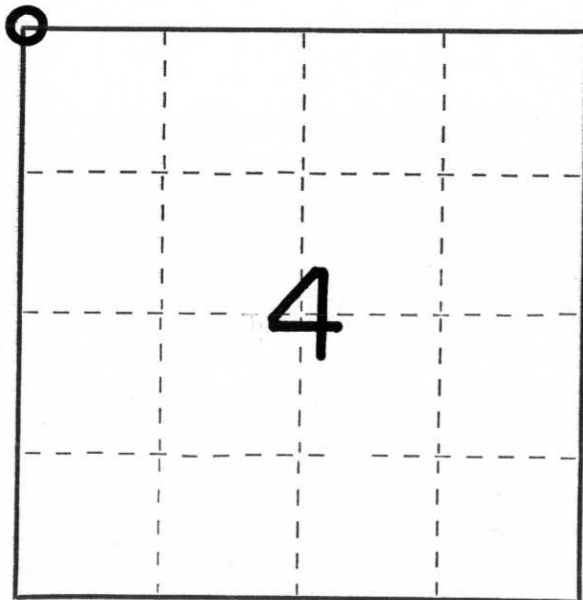
Index No. A-9

State of Wisconsin }  
County of Lincoln } ss.

I Robert H. Winat, do hereby certify that on the 5 day of January, 1973, I found evidence of the Northwest corner of Section 4 Township 35, North, Range 4 East, Fourth, Principal Meridian, as described hereon; and that from this evidence I established a new monument and accessories as described hereon to perpetuate the original location of this corner.

Resident witnesses:

-----  
-----  
-----



○ = Corner monument restored.

History of original corner establishment:

Alex Andersen  
July 1864  
Wood Post  
10" Hemlock N50°W, 19 lk  
10" Hemlock N55°E, 47 lk  
9" Hemlock S10°E, 10 lk  
9" Hemlock S33°W, 27 lk

Description of corner evidence found:

This corner was re-established from the iron pin set 33 feet North by the Division of Highways and A.W. Kordick, Lincoln County Surveyor in 1945, even though this location is about 4 feet longer than D.S. Burnett's from the north one-quarter corner of Section 4. The corner fits the road intersections and Burnett's ties to the ditch and Town Hall building.

Description of monument and accessories I established to perpetuate the original location of this corner.

Lincoln Co. Berntsen monument 36"  
1' north of center Hwy."8"  
Ties  
PK & disc in 15" Elm N19°E, 75.55'  
PK & disc in 6" White birch N28°W, 75.18'  
1-1/8" dia. iron bar N5°W, 33.00'  
L-mark on NE corner north end concrete box culvert N74°W, 98.84'  
L-mark on SE corner South end concrete box culvert S67°W, 98.80'  
Concrete block corner at metal siding northwest corner Town garage building S34°E, 102.62'

Dated at Minosqua, Wis., this 19th day of November, 1974

Signature Robert H. Winat Title Land Surveyor Registration No. S-1040  
(County Surveyor, Registered Land Surveyor, or other duly authorized official)

Office of Register of Deeds, County of \_\_\_\_\_, I hereby certify that the within instrument was filed in this office for record on the \_\_\_\_\_ day of \_\_\_\_\_, 19\_\_\_\_ at \_\_\_\_\_ o'clock \_\_\_\_\_ M.

\_\_\_\_\_  
(Register of Deeds)

By \_\_\_\_\_ Deputy