

# Attachment to Tie Sheet W-17, T35N, R8E

43508342000

I visited the corner on 10/24/2018 to verify the corner and reference tie monumentation. I found the Granite monument, up 18", and all 4 ties from Dennis Roberts (MSA) tie sheet (05/29/2003). The established Coordinates and all 4 ties agree with existing monument.

 4/02/19

Anthony R. Dallman, PLS-2405

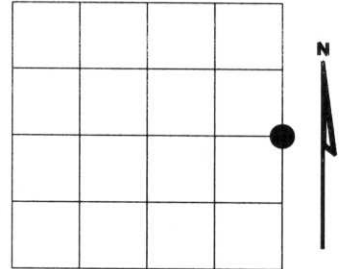
Lincoln County Surveyor



# U.S. PUBLIC LAND SURVEY MONUMENT RECORD

NOTE: This form is intended and designed to fulfill all requirements of Wisconsin Administrative Code, Chapter A-E 7.08 U.S. Public Land Survey Monument Record (3)(a)(b)(c)(d)(e)(f)(g)(h)(i). An additional sheet may be added if necessary to conform with said requirements.

(a) Corner location: Township 35 North  
 Range 08 East  
 Town of HARRISON  
 LINCOLN County, Wisconsin



Section 34

(b)(f)(g)(h) Description of monument found at this corner and if it was accepted, state all evidence (material, testimonial, occupational, plats, records, other monuments) used as a basis for accepting. If not accepted or if nothing was found, state evidence used as basis for establishing location. If reestablished through lost corner proportionate methods, indicate all monuments, distances and directions used to establish. Indicate type of monument found or set and sign post.

1861 - Original corner set by Jas L. Nowlin

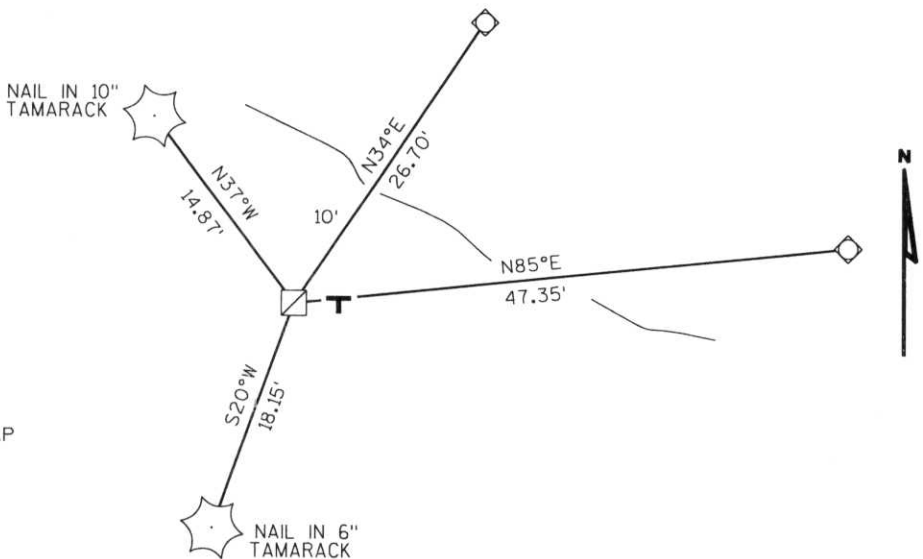
1937- Francis Fuchs set 6" x 6" granite stone mounded with stone, from stake set from very old BT very plain after chopping off over growth, stone 10' into swamp.  
 N. Pine 7" S10°E 7.9 Lks.  
 Spruce 4" S41°W 49.9 Lks.

2003- I found 6" x 6" granite stone in swamp leaning west, straightened and mounded with stone.

Witnessed corner as shown below.

(c)(d)(e) Plan view of corner with ties to at least 4 witness monuments. If in disagreement with previously established corner, show the distances between the two corners and also indicate the ties to the disputed corner.

RECEIVED AT LINCOLN COUNTY  
 COURTHOUSE THIS 24<sup>TH</sup> DAY  
 OF June 20 03  
*Zony Dalk*  
 LAND INFORMATION OFFICE



- FOUND 6"x6" GRANITE MONUMENT
- SET 3/4" DIA. ROD WITH ALUMINUM CAP
- T** PLASTIC "T" SIGN POST EAST 2'

(i) I, Dennis Roberts, Registered Land Surveyor #S-1863, hereby certify that the corner location on this record was determined by me or under my direction and control and that this U.S. Public Land Survey Monument Record is correct and complete to the best of my knowledge and belief.



*Dennis B. Roberts*  
 Signature

5/29/03  
 Date

Index No. \*\*\*\*\*  
 W-17





THE  
SURVEY  
STAFF  
IS  
NOT  
TO  
BE  
USED  
FOR  
OTHER  
PURPOSES

L9