

# Attachment to Tie Sheet Y-13, T35N, R8E

43508330000

I visited the corner on 8/29/2018 to verify the corner and reference tie monumentation. I found the Granite monument and all 4 ties from Dennis Roberts (MSA) tie sheet (12/04/2002). The established Coordinates and all 4 ties agree with existing monument.

I also found 2 additional ties that were previously set at:

N 81° W, 17.79'

N 24° W, 25.31'

*Anthony R. Dallman* 4/01/19

Anthony R. Dallman, PLS-2405

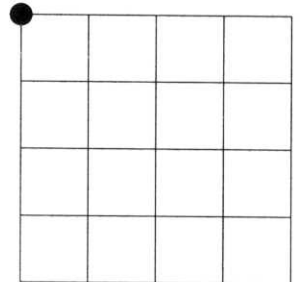
Lincoln County Surveyor



# U.S. PUBLIC LAND SURVEY MONUMENT RECORD

NOTE: This form is intended and designed to fulfill all requirements of Wisconsin Administrative Code, Chapter A-E 7.08 U.S. Public Land Survey Monument Record (3)(a)(b)(c)(d)(e)(f)(g)(h)(i). An additional sheet may be added if necessary to conform with said requirements.

(a) Corner location: Township 34 North  
 Range 8 East  
 Town of HARRISON  
 LINCOLN County, Wisconsin



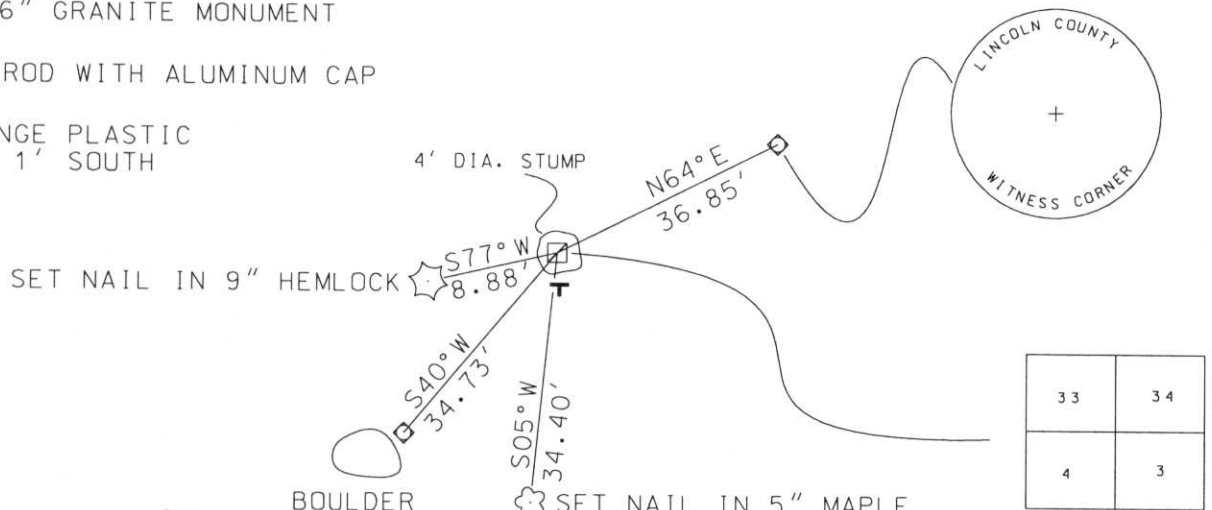
Section 03

(b)(f)(g)(h) Description of monument found at this corner and if it was accepted, state all evidence (material, testimonial, occupational, plats, records, other monuments) used as a basis for accepting. If not accepted or if nothing was found, state evidence used as basis for establishing location. If reestablished through lost corner proportionate methods, indicate all monuments, distances and directions used to establish. Indicate type of monument found or set and sign post.

- 1851 - Original corner set by Jas. M. Marsh.
- 1938 - Frances Fuchs found original stump of witness tree still intact. Tree was used as corner post. Old survey stakes in the stump. Blazes and marking on the stump. Stump corresponds to witness trees. Set stone in heart of stump by opening side that faces the road, mounded with stone. 65' to Centerline of Co. Trunk "B" East.  
 BTs: 4" Maple S72°E 21.8 Lks.  
 5" W. Pine N59°E 59 Lks.  
 4" Maple N08°W 46.9 Lks.  
 6" Maple S28°W 18.8 Lks.
- 1978 - Sheridan D. Schwark found 6"x6" granite stone, see C.S.M. No. 229.
- 2002 - I found 6"x6" granite stone. A 3/4" iron rod along west side, inside of old 4' dia. stump. corner is 65' west of Centerline of Co. Trunk "B".  
 Iron rod with Lincoln Co. Aluminum Tablet N64°E 36.85', set by Tony Dallman.  
 Iron rod with Lincoln Co. Aluminum Tablet S48°W 34.73', set by Tony Dallman.

(c)(d)(e) Plan view of corner with ties to at least 4 witness monuments. If in disagreement with previously established corner, show the distances between the two corners and also indicate the ties to the disputed corner.

- FOUND 6"x6" GRANITE MONUMENT
- FOUND 3/4" ROD WITH ALUMINUM CAP
- FOUND ORANGE PLASTIC SIGN POST 1' SOUTH



BOULDER  
 RECEIVED AT LINCOLN COUNTY  
 COURTHOUSE THIS 11<sup>TH</sup> DAY  
 OF December 20 02  
*Tony Dallman*  
 LAND INFORMATION OFFICE

(i) I, Dennis Roberts, Registered Land Surveyor \*S-1863, hereby certify that the corner location on this record was determined by me or under my direction and control and that this U.S. Public Land Survey Monument Record is correct and complete to the best of my knowledge and belief.



*Dennis B. Roberts*  
 Signature  
 12-04-02  
 Date

Index No. A-13-