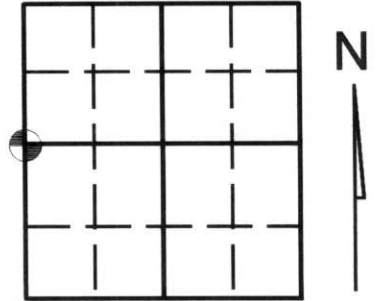


# U.S. PUBLIC LAND SURVEY MONUMENT RECORD

Note: This form is intended and designed to fulfill all requirements of Wisconsin Administrative Code, Chapter A-E 7.08 U.S. Public Land Survey Monument Record (3)(a)(b)(c)(d)(e)(f)(g)(h)(i). An additional sheet may be added if necessary to conform with said requirements.

(a) Corner location: Township 35 North  
Range 08 (East) West

Town/City/Village HARRISON  
County LINCOLN



Section 33

(b) (f) (g) (h) Description of monument found at this corner and if it was accepted, state all evidence (material, testimonial, occupational, plats, records, other monuments) used as a basis for accepting. If not accepted or if nothing was found, state evidence used as basis for establishing location. If reestablished through lost corner proportionate methods, indicate all monuments, distances and directions used to establish. Indicate type of monument found or set and sign post.

-1865- JAS NOWLIN SET 1/4 POST AND MADE THE FOLLOWING BEARING TREES: HEMLOCK 10" NORTH 45 DEGREES EAST, 10 LINKS, BIRCH 8" SOUTH 11 DEGREES WEST, 8 LINKS

-1996- LESTER SCHMIT SET BERNSTEN MONUMENT FOR E. 1/4 SECTION 32 DWG. NO. 1144

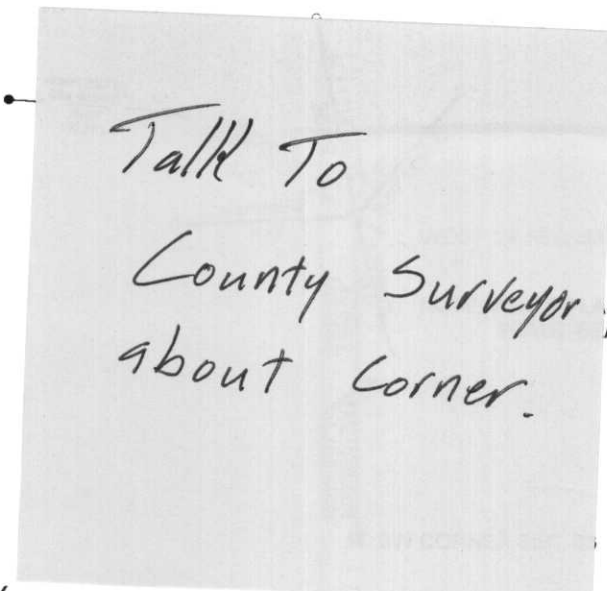
-1996- LESTER SCHMIT INDICATES BERNSTEIN MOMUMENT FOR W. 1/4 SECTION 33 DWG. NO. 1090

-2000- KEVIN BIXBY SET 1" X 24" IRON PIPE FOR WEST 1/4 CORNER. SET CORNER FROM DATA SHOWN ON TIMBERLAND SURVEYORS DWG. NO. 1144 AND WITNESSED AS SHOWN BELOW.

(c) (d) (e) Plan view of corner with ties to at least 4 witness monuments. If in disagreement with previously established corner, show the distances between the two corners and also indicate the ties to the disputed corner.

### LEGEND

- SET LINCOLN COUNTY WITNESS MONUMENT
- SET 1" X 24" IRON PIPE
- ( ) MEASURED BY OTHERS
- FOUND GRANITE MONUMENT
- FOUND 1" IRON PIPE



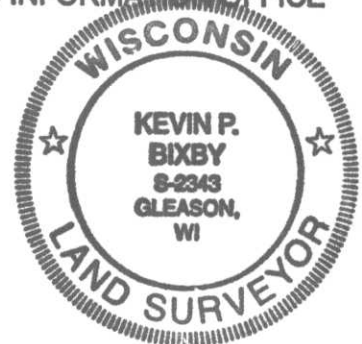
STIC SIGN POST SET 1.00 FOOT SOUTH OF CORNER. NO ARINGS AND DISTANCES MEASURED WITH TOTAL STATION.

RECEIVED AT LINCOLN COUNTY  
COURTHOUSE THIS 14<sup>TH</sup> DAY  
OF December 20 00  
Tony Dallman  
LAND INFORMATION OFFICE

(i) I, KEVIN P. BIXBY

(type or print name) certify that the corner location on this record was determined by me or under my direction and control and that this U.S. Public Land Survey Monument Record is correct and complete to the best of my knowledge and belief.

Kevin P. Bixby  
Signature Date 12/13/00



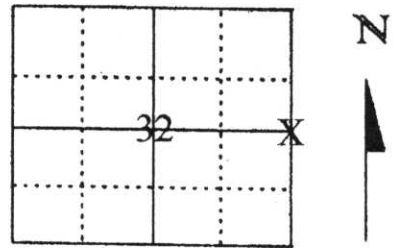
Stamp

Index No. 10-9

# U.S. PUBLIC LAND SURVEY MONUMENT RECORD

Note: This form is intended and designed to fulfill all requirements of Wisconsin Administrative Code, Chapter A-E 5.02, U.S. Public Land Survey Monument Record (3) (a) (b) (c) (d) (e) (f) (g) (h) (i). An additional sheet may be added if necessary to conform with said requirements.

(a) Corner location: Township 35 North  
 Range 8 East  
 Town/City/Village HARRISON  
 County Lincoln



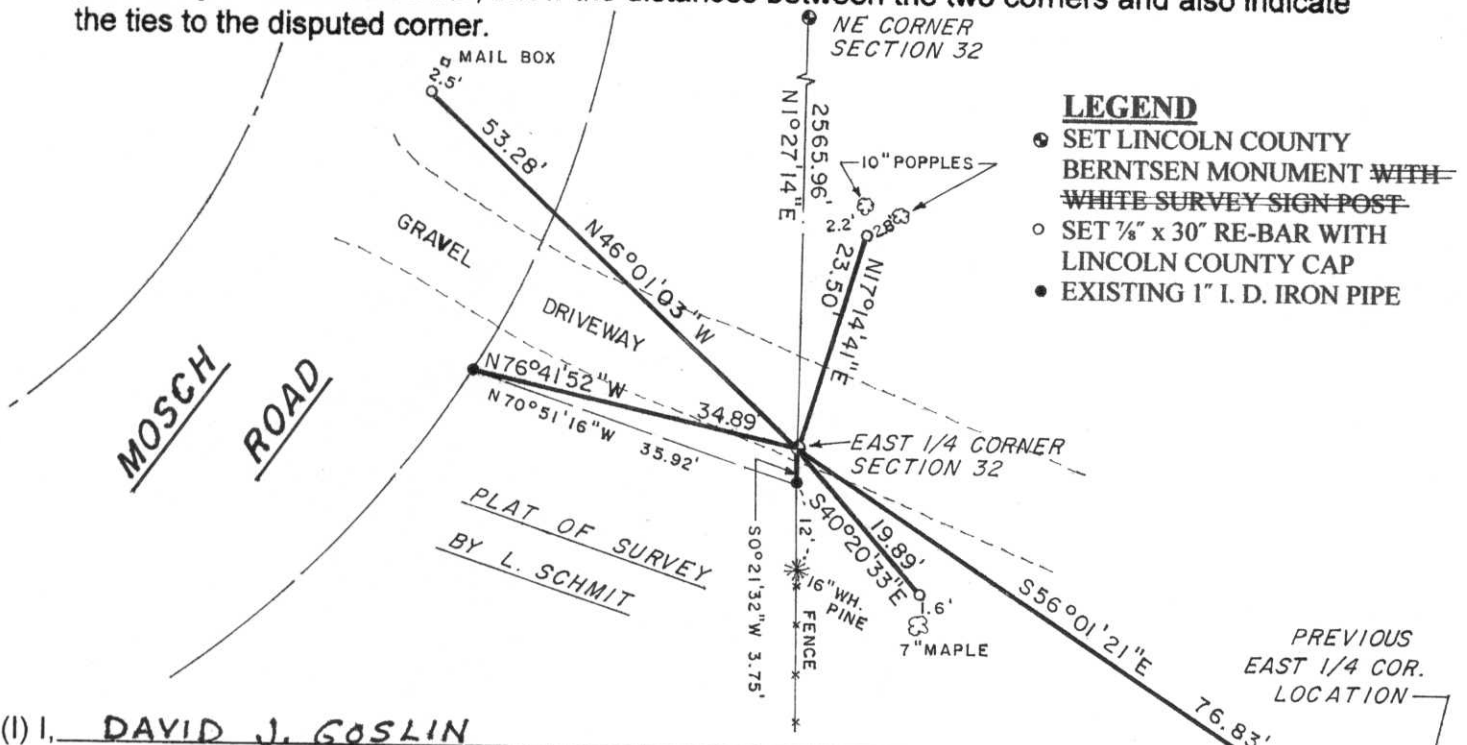
Section 32

(b) (f) (g) (h) Description of monument found at this corner and if it was accepted, state all evidence (material, testimonial, occupational, plats, records, other monuments) used as a basis for accepting. If not accepted or if nothing was found, state evidence used as basis for establishing location. If reestablished through lost corner proportionate methods, indicate all monuments, distances and directions used to establish.

IN 1865, JOS. L. NOWLIN SET ORIGINAL CORNER. IN 1996, LESTER J. SCHMIDT MAPS L-234 AND M-372 SHOWS BERNTSEN MONUMENT FOR THIS CORNER. IN 2000, KEVIN BIXBY SET A 1" IRON PIPE FOR CORNER BASED ON LESTER J. SCHMIDT MAPS. IN THE CORNER LOCATION AREA, I ESTABLISHED A POINT BY EXTENDING A NORTH-SOUTH FENCE TO THE NORTH AND REMANENTS OF AN OLD EAST-WEST FENCE TO THE WEST. THIS POINT FALLS ABOUT 77 FEET NORTHWEST OF EXISTING SECTION CORNER. BY USING THIS ESTABLISHED POINT AS THE EAST 1/4 CORNER AND RUNNING THE LINE NORTH THROUGH A POINT ESTABLISHED BY HIGHWAY CENTER-LINE STATIONING TO THE REMANENTS ON AN OLD EAST-WEST FENCE-LINE. THIS POSITION (SEE NEW TIE SHEET) FITS THE LOCATION FOR THE NORTHEAST CORNER OF SECTION 32 AS SHOWN ON THE CEMETARY PLAT IN THE SE1/4 OF THE SE1/4 OF SECTION 29. BASED ON THIS, I ACCEPTED THE FENCE-LINE INTERSECTION LOCATION AS THE EAST 1/4 CORNER OF SECTION 32 AND TIED OUT AS SHOWN BELOW. REFER TO PLAT OF SURVEY MAP BY ME, FILED WITH THE COUNTY SURVEYOR, FOR MORE DETAILS ON SETTING THIS CORNER.

RECEIVED BY LINCOLN COUNTY  
 SURVEYOR THIS 7<sup>TH</sup> DAY  
 OF November 20 05  
Tony Dalton  
 COUNTY SURVEYOR

(c) (d) (e) Plan view of corner with ties to at least 4 witness monuments. If in disagreement with previously established corner, show the distances between the two corners and also indicate the ties to the disputed corner.



- LEGEND**
- SET LINCOLN COUNTY BERNTSEN MONUMENT WITH ~~WHITE SURVEY SIGN POST~~
  - SET 7/8" x 30" RE-BAR WITH LINCOLN COUNTY CAP
  - EXISTING 1" I. D. IRON PIPE

(i) I, DAVID J. GOSLIN

(type or print name) certify that the corner location on this record was determined by me or under my direction and control and that this U.S. Public Land Survey Monument Record is correct and complete to the best of my knowledge and belief.

David J. Goslin  
 Signature



11-6-05  
 Date

Index No.

b-9