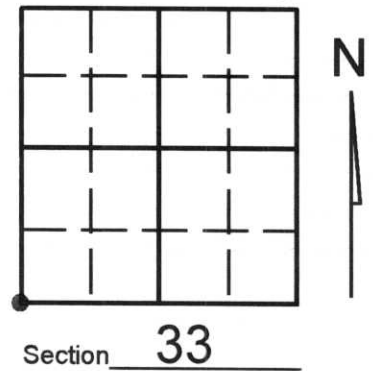


U.S. PUBLIC LAND SURVEY MONUMENT RECORD

Note: This form is intended and designed to fulfill all requirements of Wisconsin Administrative Code, Chapter A-E 7.08 U.S. Public Land Survey Monument Record (3)(a)(b)(c)(d)(e)(f)(g)(h)(i). An additional sheet may be added if necessary to conform with said requirements.

(a) Corner location: Township 35 North
 Range 08 (East) West

Town/City/Village HARRISON
 County LINCOLN



(b) (f) (g) (h) Description of monument found at this corner and if it was accepted, state all evidence (material, testimonial, occupational, plats, records, other monuments) used as a basis for accepting. If not accepted or if nothing was found, state evidence used as basis for establishing location. If reestablished through lost corner proportionate methods, indicate all monuments, distances and directions used to establish. Indicate type of monument found or set and sign post.

-1851- JAS M. MARGH - SET SECTION CORNER POST AND MADE THE FOLLOWING B.T.s: 8" SPRUCE, S 89° E, 11 LINKS; 12" BIRCH, S 73° W, 60 LINKS; 9" BIRCH, N 61° W, 32 LINKS; 10" BIRCH, N 87° E, 21 LINKS.

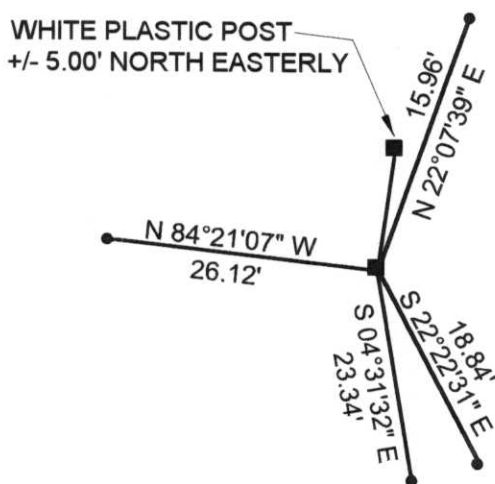
-F. FOX- SET GRANITE STONE AND MADE FOLLOWING B.T.s: 12" HEMLOCK, N 81° E, 19.2 LINKS; 15" P. STUMP, N 05° W, 28 LINKS; 4" HEMLOCK, S 27° E, 29.1 LINKS; 8" HEMLOCK, S 16° W, 60 LINKS.

-1996- LESTER SCHMIDT FOUND GRANITE STONE

-2000- KEVIN BIXBY FOUND GRANITE STONE AND WITNESSED AS SHOWN BELOW

(c) (d) (e) Plan view of corner with ties to at least 4 witness monuments. If in disagreement with previously established corner, show the distances between the two corners and also indicate the ties to the disputed corner.

NOTE: BEARINGS AND DISTANCES MEASURED WITH TOTAL STATION. NO SCALE.
 SET 1" x 24" IRON PIPE ON NORTH SIDE OF GRANITE.



LEGEND
 • SET LINCOLN COUNTY WITNESS MONUMENT
 ■ GRANITE MONUMENT

RECEIVED AT LINCOLN COUNTY COURTHOUSE THIS 14TH DAY OF December 2000
Tony Wallman
 LAND INFORMATION OFFICE

BEARINGS REFERENCED TO THE WEST LINE OF SECTION 33, T35N, R09E, ASSUMED TO BEAR N 00°39'07\"/>

(i) I, KEVIN P. BIXBY
 (type or print name) certify that the corner location on this record was determined by me or under my direction and control and that this U.S. Public Land Survey Monument Record is correct and complete to the best of my knowledge and belief.



K. P. Bixby 12/12/00
 Signature Date

Stamp

Index No. 7-9