

LINCOLN COUNTY U.S. PUBLIC LAND SURVEY MONUMENT LOCATION RECORD

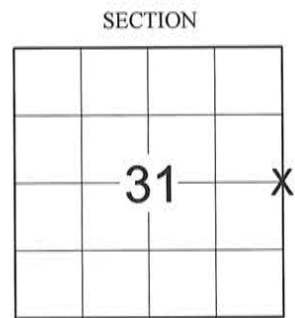
SECTION 31
TOWNSHIP 35 N
RANGE 8 E

W-5
NO.

LANDMARK BENCHMARK _____
CORNER IDENTITY: SNM1 NAIL FOUND
 SET
 RESET
 RE-TIED

HARRISON
CITY, VILLAGE, TOWN

LINCOLN COUNTY COORDINATE: N: _____
 E: _____
ELEVATION-(FEET): _____ DATUM: _____
WEATHER: PARTLY SUNNY
DATE OF SURVEY: 11-18-2015 TEMPERATURE: 30 °F
SURVEY PARTY: KEITH WALKOWSKI



BASIS FOR MONUMENT LOCATION:
(DESCRIBE METHOD OF SURVEY AND CORNER AUTHENTICATION)

THE TIE SHEET OF RECORD BY WILLIAM NUTTER SHOWS THE EAST 1/4 CORNER AS A HARRISON MONUMENT. TONY DAHLMAN, COUNTY SURVEYOR HAD A NOTE ON THE TIE SHEET THAT THE CORNER IS A SNM1 NAIL SET BY THE COUNTY SURVEYOR. TALKED TO THE COUNTY SURVEYOR ABOUT THIS CORNER. I COULD NOT FIND THE HARRISON MONUMENT CALLED FOR BY NUTTER. DIRECTED BY THE COUNTY SURVEYOR I HELD THE FOUND SNM1 NAIL AND USED NUTTER'S TIES TO PERPETUATE THE CORNER LOCATION AS SHOWN BELOW.

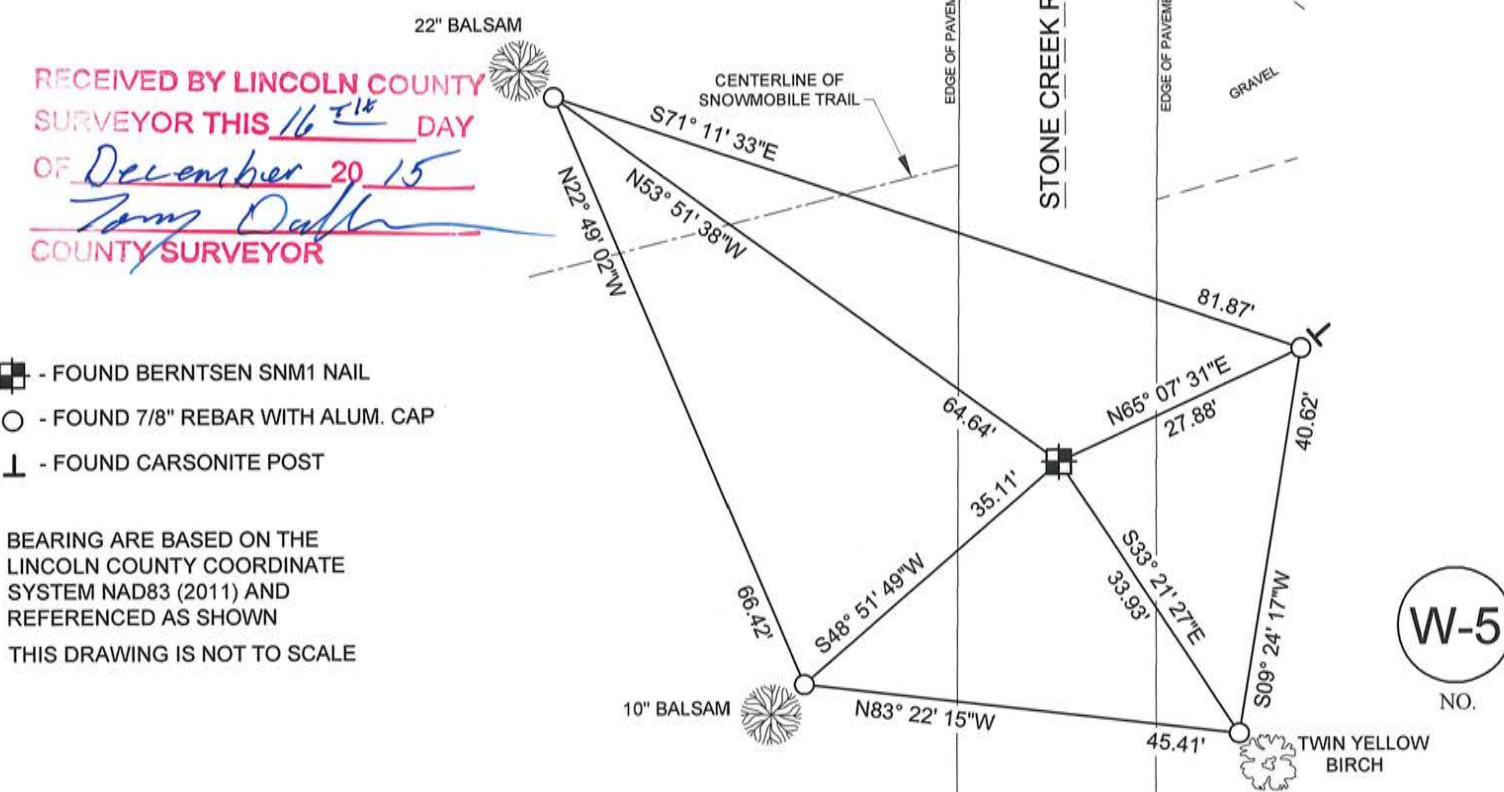


CERTIFIED CORRECT:
Keith J. Walkowski

KEITH J. WALKOWSKI S-2717
Registered Land Surveyor
DATE: DECEMBER 14TH, 2015

FIELD BOOK NO. NA PAGE NO. NA
COMPANY RIVERSIDE LAND SURVEYING LLC

TIE SKETCH:



- FOUND BERNTSEN SNM1 NAIL
- FOUND 7/8" REBAR WITH ALUM. CAP
- FOUND CARSONITE POST

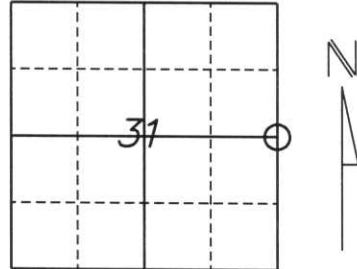
BEARING ARE BASED ON THE
LINCOLN COUNTY COORDINATE
SYSTEM NAD83 (2011) AND
REFERENCED AS SHOWN
THIS DRAWING IS NOT TO SCALE

W-5
NO.

U.S. PUBLIC LAND SURVEY MONUMENT RECORD

Note: This form is intended and designed to fulfill all requirements of Wisconsin Administrative Code, Chapter A-E 5.02, U.S. Public Land Survey Monument Record (3) (a) (b) (c) (d) (e) (f) (g) (h) (l). An additional sheet may be added if necessary to conform with said requirements.

(a) Corner location: Township 35 North
 Range 8 East
 Town/City/Village HARRISON
 County Lincoln



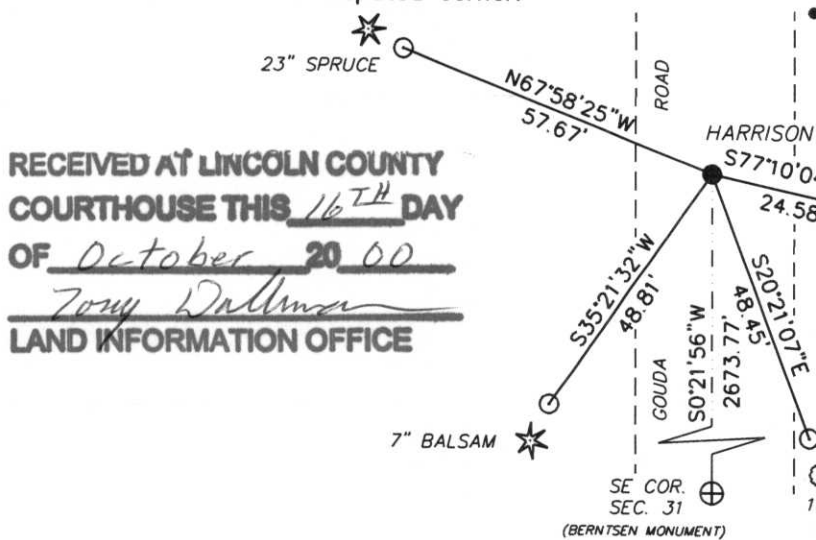
Section 31

(b) (f) (g) (h) Description of monument found at this corner and if it was accepted, state all evidence (material, testimonial, occupational, plats, records, other monuments) used as a basis for accepting. If not accepted or if nothing was found, state evidence used as a basis for establishing location. If reestablished through lost corner proportionate methods, indicate all monuments, distances and directions used to establish.

ORIGINAL SURVEY DONE BY UNKNOWN IN APRIL, 1865 SET A 1/4 SECTION POST WITH BEARING TREES:
 10" HEMLOCK S45°N 4 LINKS
 8" HEMLOCK S40°E 13 LINKS

FOUND A HARRISON MONUMENT ON THE CENTERLINE OF GOUDA ROAD ABOUT 1 FOOT BELOW THE SURFACE. SET (4) 7/8" REBAR AS WITNESS TIES TO THE CORNER.

(c) (d) (e) Plan view of corner with ties to at least 4 witness previously established corner, show the distances between the ties to the disputed corner.



RECEIVED AT LINCOLN COUNTY
 COURTHOUSE THIS 16TH DAY
 OF October 20 00
Tony Dallman
 LAND INFORMATION OFFICE

Corner is an ~~SUM~~ Sum Nail
 set by the County Surveyor.
 Talk to the County Surveyor
 about this corner.

(l) I, William W. Nutter RLS, S-2299
 (type or print name) certify that the corner location on t/ by me or under my direction and control and that this U. Monument Record is correct and complete to the best of

William W. Nutter
 Signature