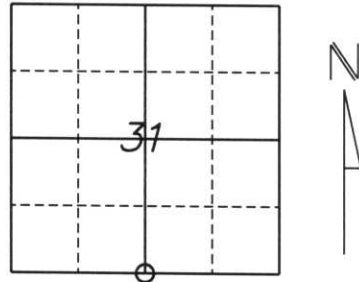


U.S. PUBLIC LAND SURVEY MONUMENT RECORD

Note: This form is intended and designed to fulfill all requirements of Wisconsin Administrative Code, Chapter A-E 5.02, U.S. Public Land Survey Monument Record (3) (a) (b) (c) (d) (e) (f) (g) (h) (l). An additional sheet may be added if necessary to conform with said requirements.

(a) Corner location: Township 35 North
 Range 8 East
 Town/City/Village HARRISON
 County Lincoln



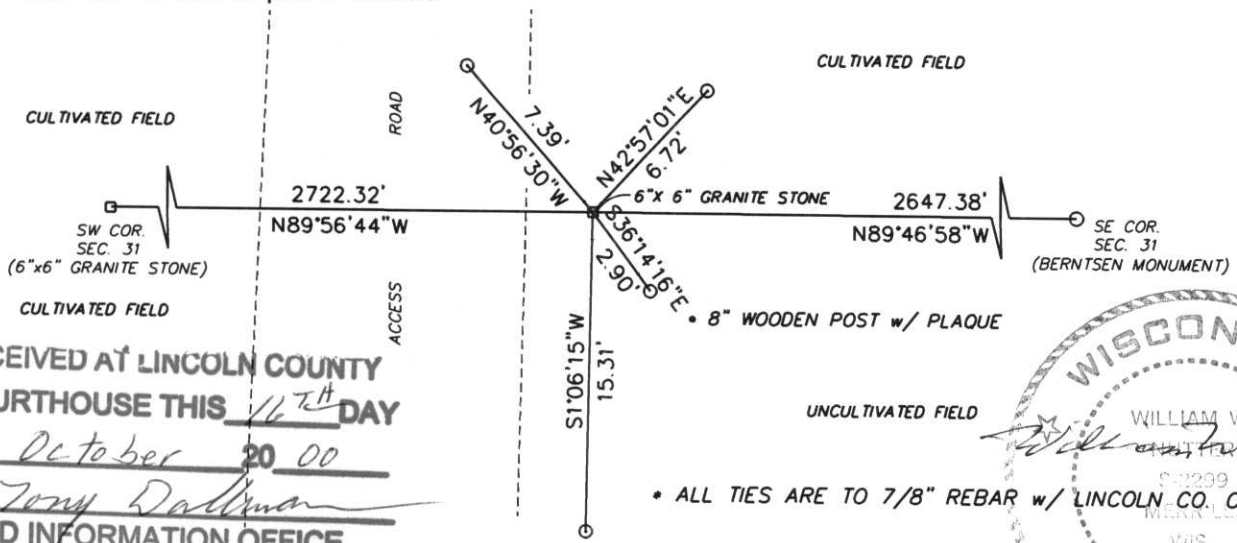
Section 31

(b) (f) (g) (h) Description of monument found at this corner and if it was accepted, state all evidence (material, testimonial, occupational, plats, records, other monuments) used as a basis for accepting. If not accepted or if nothing was found, state evidence used as a basis for establishing location. If reestablished through lost corner proportionate methods, indicate all monuments, distances and directions used to establish.

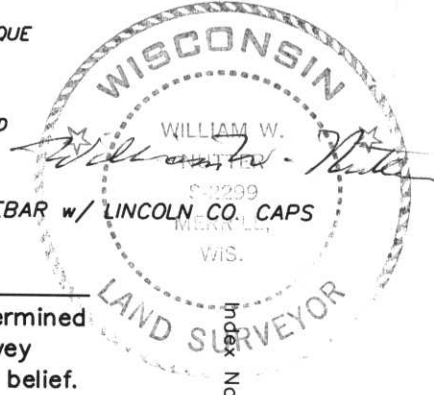
ORIGINAL SURVEY DONE BY UNKNOWN, WHO SET A WOODEN POST AT 1/4 SECTION CORNER WITH BEARING TREES:
 8" HEMLOCK S75E 14 LINKS
 7" HEMLOCK S27W 29 LINKS
 12" WHITE PINE N23W 13 LINKS
 10" WHITE PINE N59E 17 LINKS

I FOUND A 6"x 6" GRANITE STONE SET BY UNKNOWN NEXT TO A 6" WOODEN POST. APPROX. 4' AWAY. SET (4) 7/8" REBAR AS TIES TO THE GRANITE STONE.

(c) (d) (e) Plan view of corner with ties to at least 4 witness monuments. If in disagreement with previously established corner, show the distances between the two corners and also indicate the ties to the disputed corner.



RECEIVED AT LINCOLN COUNTY COURTHOUSE THIS 16TH DAY OF October 20 00
Tony Dallman
 LAND INFORMATION OFFICE



(l) I, William W. Nutter RLS, S-2299 (type or print name) certify that the corner location on this record was determined by me or under my direction and control and that this U.S. Public Land Survey Monument Record is correct and complete to the best of my knowledge and belief.

William W. Nutter Signature 10-16-00 Date