

Attachment to Tie Sheet Y-05, T35N, R8E

43508310000

I visited the corner on 11/08/2018 to verify the corner and reference tie monumentation. I found the Granite monument, down 14", and all 4 ties from Riverside Land Surveying tie sheet (12/14/2015). The established Coordinates and all 4 ties agree with existing monument.

 4/02/19

Anthony R. Dallman, PLS-2405

Lincoln County Surveyor



LINCOLN COUNTY U.S. PUBLIC LAND SURVEY MONUMENT LOCATION RECORD

SECTION 31
TOWNSHIP 35 N
RANGE 8 E

Y-5
NO.

LANDMARK BENCHMARK _____
CORNER IDENTITY: 6" x 6" GRANITE STONE WITH "X"

FOUND
SET
RESET
RE-TIED

HARRISON
CITY, VILLAGE, TOWN

LINCOLN COUNTY COORDINATE: N: _____

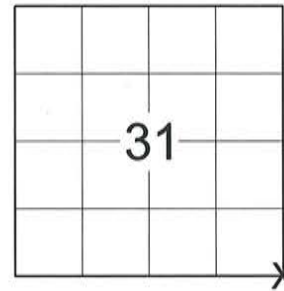
E: _____

ELEVATION-(FEET): _____ DATUM: _____

WEATHER: PARTLY SUNNY

DATE OF SURVEY: 11-18-2015 TEMPERATURE: 30 °F

SURVEY PARTY: KEITH WALKOWSKI



BASIS FOR MONUMENT LOCATION:
(DESCRIBE METHOD OF SURVEY AND CORNER AUTHENTICATION)

THE TIE SHEET OF RECORD BY WILLIAM NUTTER SHOWS THE SOUTHEAST CORNER AS A 2" IRON PIPE. TONY DAHLMAN, COUNTY SURVEYOR HAD A NOTE ON THE TIE SHEET STATING THE CORNER IS A 6" x 6" STONE NORTH OF THE 2" IRON PIPE. I DUG FOR THE CORNER AND LOCATED BOTH THE GRANITE STONE AND THE 2" IRON PIPE ALONG WITH THE FOUR TIES. REFERENCED THE TIES TO THE GRANITE STONE TO PERPETUATE THE CORNER LOCATION AS SHOWN BELOW.



CERTIFIED CORRECT:
Keith J. Walkowski
KEITH J. WALKOWSKI S-2717
Registered Land Surveyor
DATE: DECEMBER 14TH, 2015

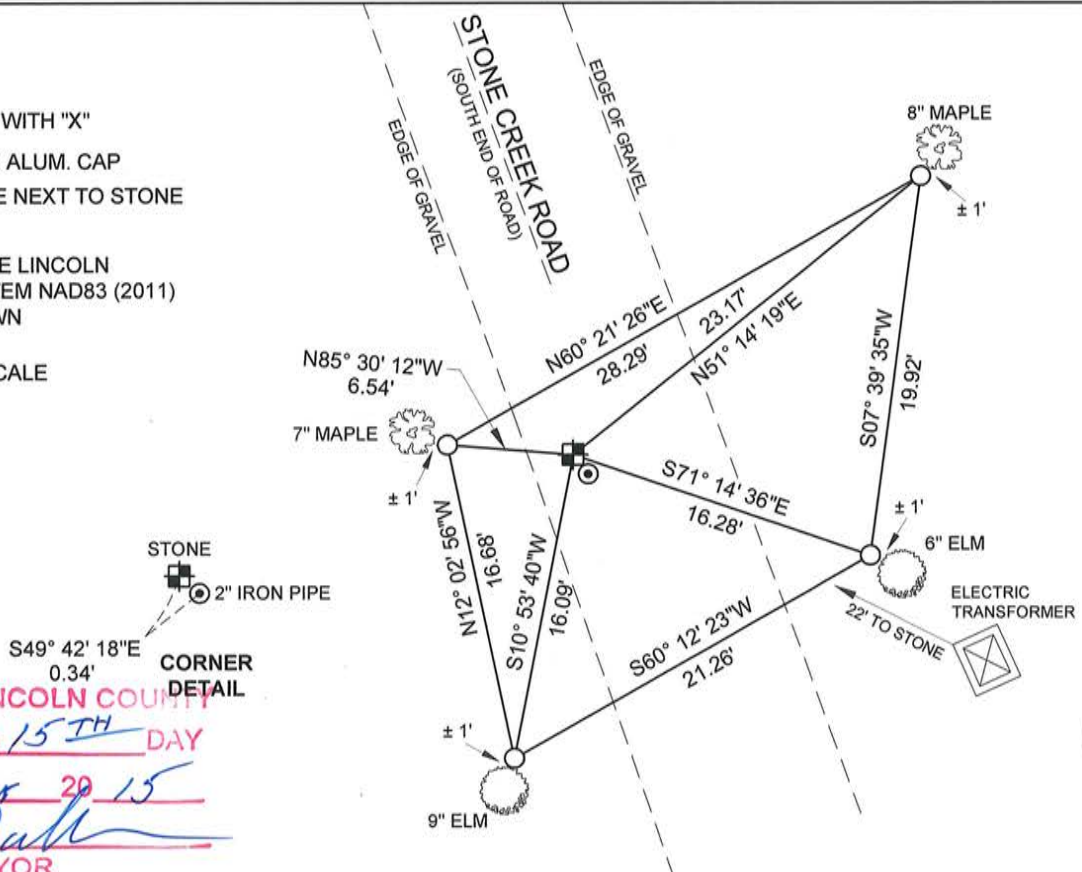
FIELD BOOK NO. NA PAGE NO. NA
COMPANY RIVERSIDE LAND SURVEYING LLC

TIE SKETCH:

- 6" x 6" GRANITE STONE WITH "X"
- FOUND 7/8" REBAR WITH ALUM. CAP
- FOUND 2" O.D. IRON PIPE NEXT TO STONE

BEARING ARE BASED ON THE LINCOLN COUNTY COORDINATE SYSTEM NAD83 (2011) AND REFERENCED AS SHOWN

THIS DRAWING IS NOT TO SCALE



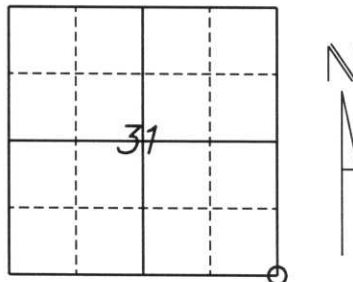
RECEIVED BY LINCOLN COUNTY
SURVEYOR THIS 15TH DAY
December 20 15
Tony Dahl
COUNTY SURVEYOR

Y-5
NO.

U.S. PUBLIC LAND SURVEY MONUMENT RECORD

Note: This form is intended and designed to fulfill all requirements of Wisconsin Administrative Code, Chapter A-E 5.02, U.S. Public Land Survey Monument Record (3) (a) (b) (c) (d) (e) (f) (g) (h) (i). An additional sheet may be added if necessary to conform with said requirements.

(a) Corner location: Township 35 North
 Range 8 East
 Town/City/Village HARRISON
 County Lincoln



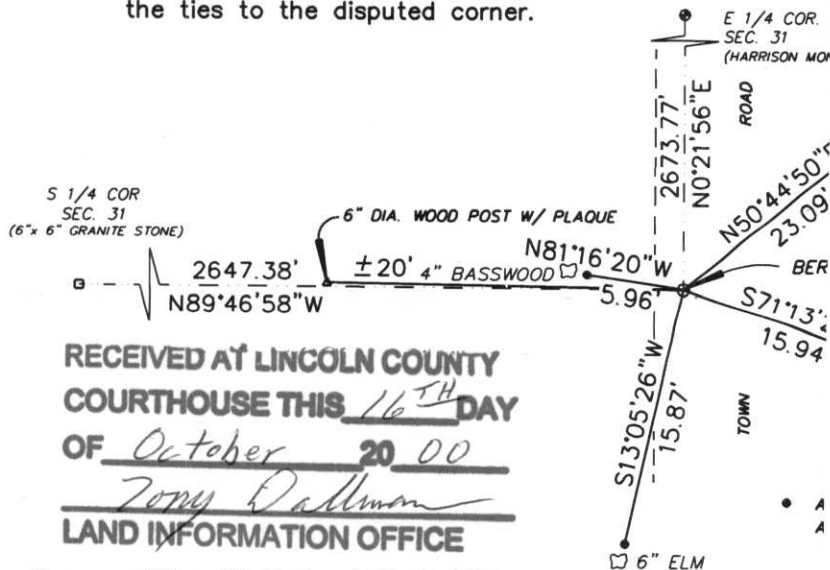
Section 31

(b) (f) (g) (h) Description of monument found at this corner and if it was accepted, state all evidence (material, testimonial, occupational, plats, records, other monuments) used as a basis for accepting. If not accepted or if nothing was found, state evidence used as a basis for establishing location. If reestablished through lost corner proportionate methods, indicate all monuments, distances and directions used to establish.

ORIGINAL SURVEY DONE BY UNKNOWN IN 1865, WHO SET A WOODEN POST AT THE SECTION CORNER
 WITH BEARINGS TREES:
 10" BIRCH S88°E 17 LINKS
 12" SUGAR S40°W 16 LINKS
 12" HEMLOCK N38°W 17 LINKS
 8" HEMLOCK N88°E 26 LINKS

I FOUND A 2" IRON PIPE APPROXIMATELY 10" BELOW THE SURFACE OF A TOWN ROAD AND
 APPROXIMATELY 20' EAST OF A 6" WOODEN POST. REPLACED THE
 MONUMENT WITH A 3" LINCOLN COUNTY CAP. SET (4) 7/8" REBAR.

(c) (d) (e) Plan view of corner with ties to at least 4 witness previously established corner, show the distances between the ties to the disputed corner.



RECEIVED AT LINCOLN COUNTY
 COURTHOUSE THIS 16TH DAY
 OF October 20 00
Tony Dallman
 LAND INFORMATION OFFICE

(i) I, William W. Nutter RLS, S-2299
 (type or print name) certify that the corner location on t
 by me or under my direction and control and that this U.
 Monument Record is correct and complete to the best of

William W. Nutter

Signature

Granite Corner is a 6" x 6" 2" I.P. 4-5