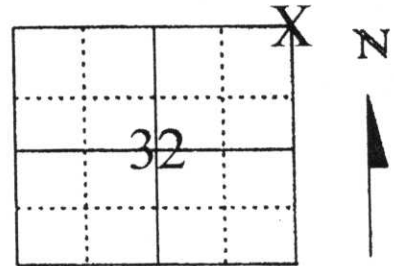


# U.S. PUBLIC LAND SURVEY MONUMENT RECORD

Note: This form is intended and designed to fulfill all requirements of Wisconsin Administrative Code, Chapter A-E 5.02, U.S. Public Land Survey Monument Record (3) (a) (b) (c) (d) (e) (f) (g) (h) (l). An additional sheet may be added if necessary to conform with said requirements.

(a) Corner location: Township 35 North  
 Range 8 East  
 Town/City/Village HARRISON  
 County Lincoln



Section 32

(b) (f) (g) (h) Description of monument found at this corner and if it was accepted, state all evidence (material, testimonial, occupational, plats, records, other monuments) used as a basis for accepting. If not accepted or if nothing was found, state evidence used as basis for establishing location. If reestablished through lost corner proportionate methods, indicate all monuments, distances and directions used to establish.

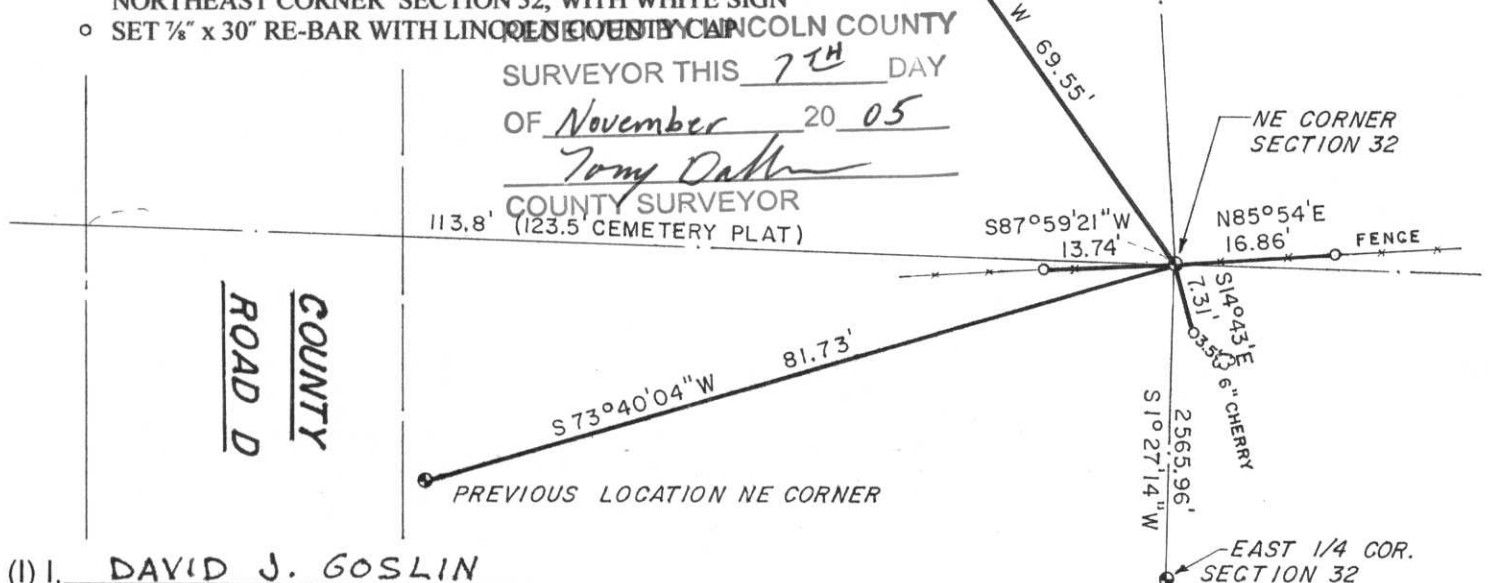
IN 1865, JOS. L. NOWLIN SET ORIGINAL CORNER. IN 1996, LESTER J. SCHMIDT (MAP L-234) SHOWS BERNTSEN MONUMENT FOR CORNER. IN 2003, DENNIS B. ROBERTS FOUND 1" IRON PIPE FOR CORNER (BERNTSEN AS SHOWN ON MAP L-234 WAS NOT SET) AND SET BERNTSEN MONUMENT IN PLACE OF IRON PIPE. I FOUND THAT AFTER DOING RESEARCH FOR SECTIONS 29 AND 32 THAT THE PREVIOUSLY ESTABLISHED SECTION CORNER WAS NOT IN THE RIGHT LOCATION. I FOUND A CEMETARY PLAT IN THE SE 1/4 OF THE SE 1/4 OF SECTION 29, SURVEYED IN OCT. 1939 BY FRANCIS FUCHS (NOT FILED WITH COUNTY UNTIL 2-3-2000) SHOWING DISTANCES TO "CORNER POST" FOR SECTION CORNER. I ALSO FOUND A RIGHT-OF-WAY PLAT FOR COUNTY HIGHWAY "D" (PROJECT S 0567(4) DATED 8-30-68) IN THE NE 1/4 OF SECTION 32, SHOWING A WOOD POST FOR THE EAST 1/4 CORNER AND THE NORTHEAST CORNER OF SECTION 32. ALSO, THE R/W PLAT SHOWED HWY. CENTER-LINE STATIONING ON THE EAST LINE OF THE NE 1/4. I RE-SET THE NORTHEAST CORNER OF SECTION 32 BY RE-SETTING THE EAST 1/4 CORNER AT THE INTERSECTION OF FENCE LINES (SEE NEW TIE SHEET) AND RUNNING THE LINE NORTH THROUGH A POINT ESTABLISHED BY HWY. CENTER-LINE STATIONING TO THE REMANENTS OF AN OLD EAST-WEST FENCE-LINE. AT THIS POINT, I SET A LINCOLN COUNTY BERNTSEN MONUMENT FOR THE NORTHEAST CORNER OF SECTION 32. THIS LOCATION FIT THE CALCULATED POSITION FROM THE SAID CEMETARY PLAT WELL. WE ONLY USED THE CEMETARY PLAT AS A CHECK THAT WE ESTABLISHED THE NORTHEAST CORNER IN THE CORRECT POSITION. NO ORIGINAL MONUMENTS WERE FOUND FROM THE CEMETARY PLAT AND ONLY OCCUPATION LINES EXIST. REFER TO PLAT OF SURVEY MAP BY ME, FILED WITH THE COUNTY SURVEYOR FOR MORE DETAILS ON SETTING THIS CORNER. TIED OUT AS SHOWN BELOW.

5" WH. PINE \* 6.5' 5.5' \* 9" WH. PINE

(c) (d) (e) Plan view of corner with ties to at least 4 witness monuments. If in disagreement with previously established corner, show the distances between the two corners and also indicate the ties to the disputed corner.

**LEGEND**

- SET LINCOLN COUNTY BERNTSEN MONUMENT, FOR NORTHEAST CORNER SECTION 32, WITH WHITE SIGN
- SET 3/8" x 30" RE-BAR WITH LINCOLN COUNTY



(l) I, DAVID J. GOSLIN

(type or print name) certify that the corner location on this record was determined by me or under my direction and control and that this U.S. Public Land Survey Monument Record is correct and complete to the best of my knowledge and belief.

David J. Goslin  
 Signature



11-6-05  
 Date

Index No.

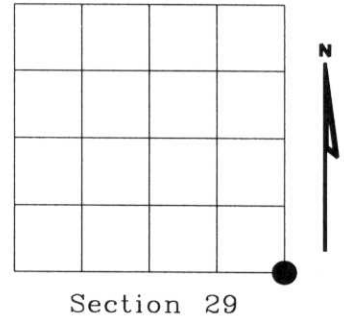
4-9



# U.S. PUBLIC LAND SURVEY MONUMENT RECORD

NOTE: This form is intended and designed to fulfill all requirements of Wisconsin Administrative Code, Chapter A-E 7.08 U.S. Public Land Survey Monument Record (3)(a)(b)(c)(d)(e)(f)(g)(h)(i). An additional sheet may be added if necessary to conform with said requirements.

(a) Corner location: Township 35 North  
 Range 08 East  
 Town of HARRISON  
 LINCOLN County, Wisconsin



(b)(f)(g)(h) Description of monument found at this corner and if it was accepted, state all evidence (material, testimonial, occupational, plats, records, other monuments) used as a basis for accepting. If not accepted or if nothing was found, state evidence used as basis for establishing location. If reestablished through lost corner proportionate methods, indicate all monuments, distances and directions used to establish. Indicate type of monument found or set and sign post.




1860 - Original corner set by Jos. L. Nowlin

1996 - Lester J. Schmidt- map L234 shows Bernsten monument for corner.

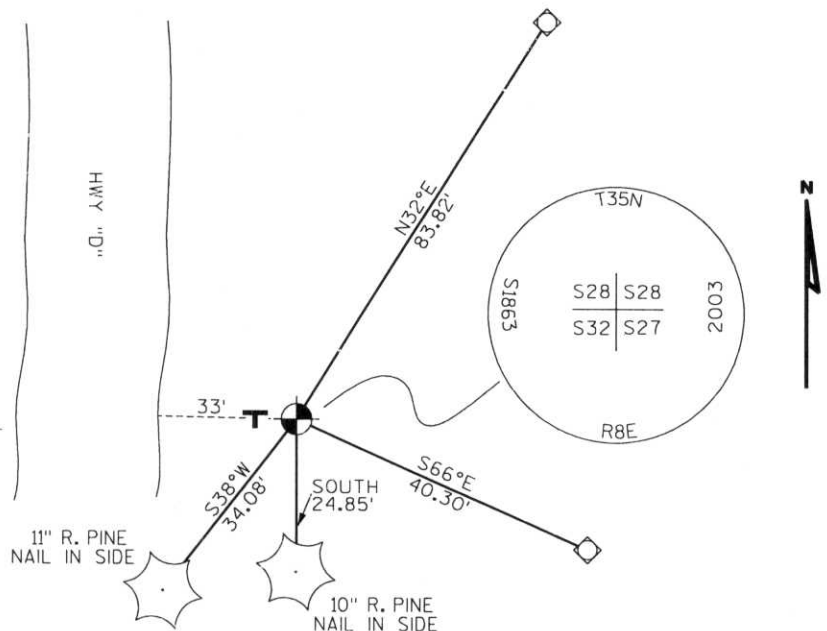
2003 - I found 1" dia. iron pipe. I called Lester J. Schmidt and he stated that iron pipe is corner (he never set a Bernsten monument as shown on map L234) He also stated he had testimony from land owner in Northwest corner that pipe was section corner.

Witnessed as shown below.

(c)(d)(e) Plan view of corner with ties to at least 4 witness monuments. If in disagreement with previously established corner, show the distances between the two corners and also indicate the ties to the disputed corner.

-  SET LINCOLN COUNTY BERNSTEN MONUMENT
-  SET 3/4" ROD WITH ALUMINUM CAP
-  PLASTIC "T" SIGN POST WEST 1'

RECEIVED AT LINCOLN COUNTY  
 COURTHOUSE THIS 29<sup>TH</sup> DAY  
 OF September 20 03  
*Tammy Dalk*  
 LAND INFORMATION OFFICE



(i) I, Dennis Roberts, Registered Land Surveyor #S-1863, hereby certify that the corner location on this record was determined by me or under my direction and control and that this U.S. Public Land Survey Monument Record is correct and complete to the best of my knowledge and belief.



*Dennis B. Roberts*  
 Signature 9/25/03  
Date

Index No. 0-9





M. A. B. C. D. E. F. G. H. I. J. K. L. M. N. O. P. Q. R. S. T. U. V. W. X. Y. Z.  
1998

K5