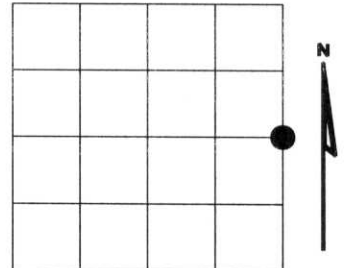


U.S. PUBLIC LAND SURVEY MONUMENT RECORD

NOTE: This form is intended and designed to fulfill all requirements of Wisconsin Administrative Code, Chapter A-E 7.08 U.S. Public Land Survey Monument Record (3)(a)(b)(c)(d)(e)(f)(g)(h)(i). An additional sheet may be added if necessary to conform with said requirements.

(a) Corner location: Township 35 North
 Range 08 East
 Town of HARRISON
 LINCOLN County, Wisconsin



Section 27

(b)(f)(g)(h) Description of monument found at this corner and if it was accepted, state all evidence (material, testimonial, occupational, plats, records, other monuments) used as a basis for accepting. If not accepted or if nothing was found, state evidence used as basis for establishing location. If reestablished through lost corner proportionate methods, indicate all monuments, distances and directions used to establish. Indicate type of monument found or set and sign post.

1865 - Original corner set by Jos. L. Nowlin

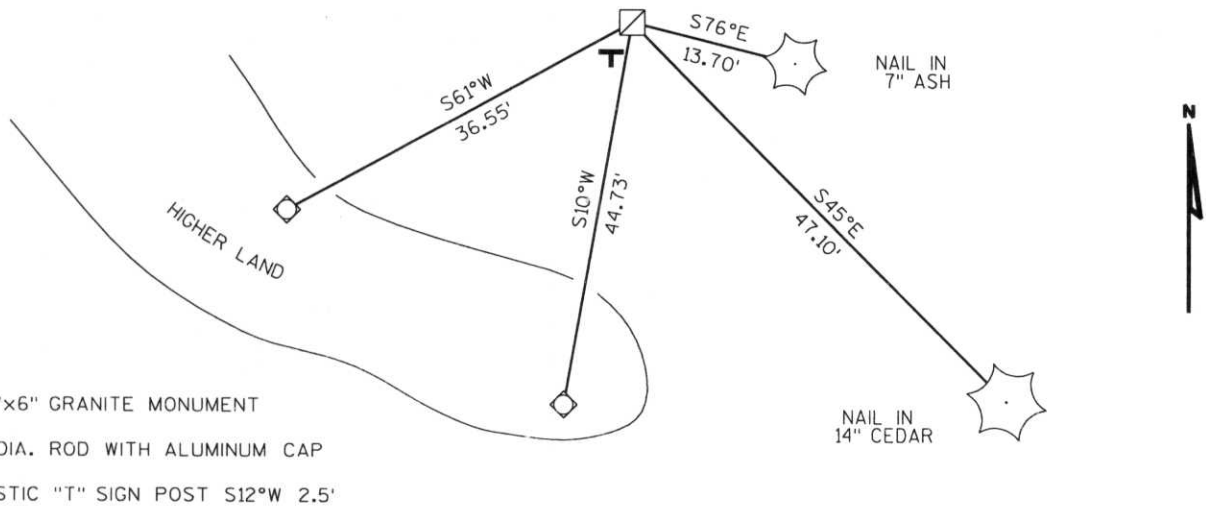
1937- Francis Fuchs found 1/4 corner post 10 years old (bears date) blazes indicate it approximately correct. Set 6" x 6" granite stone next to the south edge of a cedar stump 13" in mound of stone.
 Cedar 11" N77°W 26.2 Lks.
 Leaning cedar 8" S56°E 33.5 Lks.

2003- I found 6" x 6" granite stone out of ground lying on its side in cedar and ash swamp, mound of stone. Reset granite stone in mound of stone.
 Francis Fuchs cedar stump 13"
 24" Cedar(broken over) N77°W 17.29'
 18" Cedar(lying down) S56°E 20.10'

Witnessed corner as shown below.

RECEIVED AT LINCOLN COUNTY
 COURTHOUSE THIS 11TH DAY
 OF June 20 03
Tony Deller
 LAND INFORMATION OFFICE

(c)(d)(e) Plan view of corner with ties to at least 4 witness monuments. If in disagreement with previously established corner, show the distances between the two corners and also indicate the ties to the disputed corner.



(i) I, Dennis Roberts, Registered Land Surveyor #S-1863, hereby certify that the corner location on this record was determined by me or under my direction and control and that this U.S. Public Land Survey Monument Record is correct and complete to the best of my knowledge and belief.

Dennis B. Roberts
 Signature

5/29/03
 Date



Index No. *****
 5-17

