

U.S. PUBLIC LAND SURVEY MONUMENT RECORD

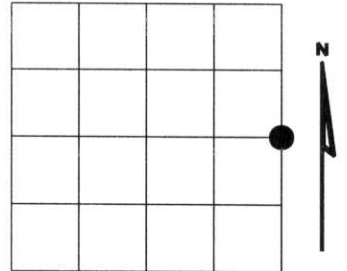
NOTE: This form is intended and designed to fulfill all requirements of Wisconsin Administrative Code, Chapter A-E 7.08 U.S. Public Land Survey Monument Record (3)(a)(b)(c)(d)(e)(f)(g)(h)(i). An additional sheet may be added if necessary to conform with said requirements.

(a) Corner location: Township 35 North

Range 08 East

Town of HARRISON

LINCOLN County, Wisconsin



Section 26

(b)(f)(g)(h) Description of monument found at this corner and if it was accepted, state all evidence (material, testimonial, occupational, plats, records, other monuments) used as a basis for accepting. If not accepted or if nothing was found, state evidence used as basis for establishing location. If reestablished through lost corner proportionate methods, indicate all monuments, distances and directions used to establish. Indicate type of monument found or set and sign post.

1865 - Original corner set by Jos. L. Nowlin

1937- Francis Fuchs- set 6" x 6" granite stone, mounded with stone by proportional measurement, corresponds to an old blaze line.

Pine stub 20" S49°E 67.4 Lks.

Pine stub 12" N23°W 100.8 Lks.

West 86' to leave swamp- south 193' to creek.

2003- I found 6"x6" granite stone, mounded with stone in open marsh.

Francis Fuchs Bts: Pine stump S49°E 44.48'

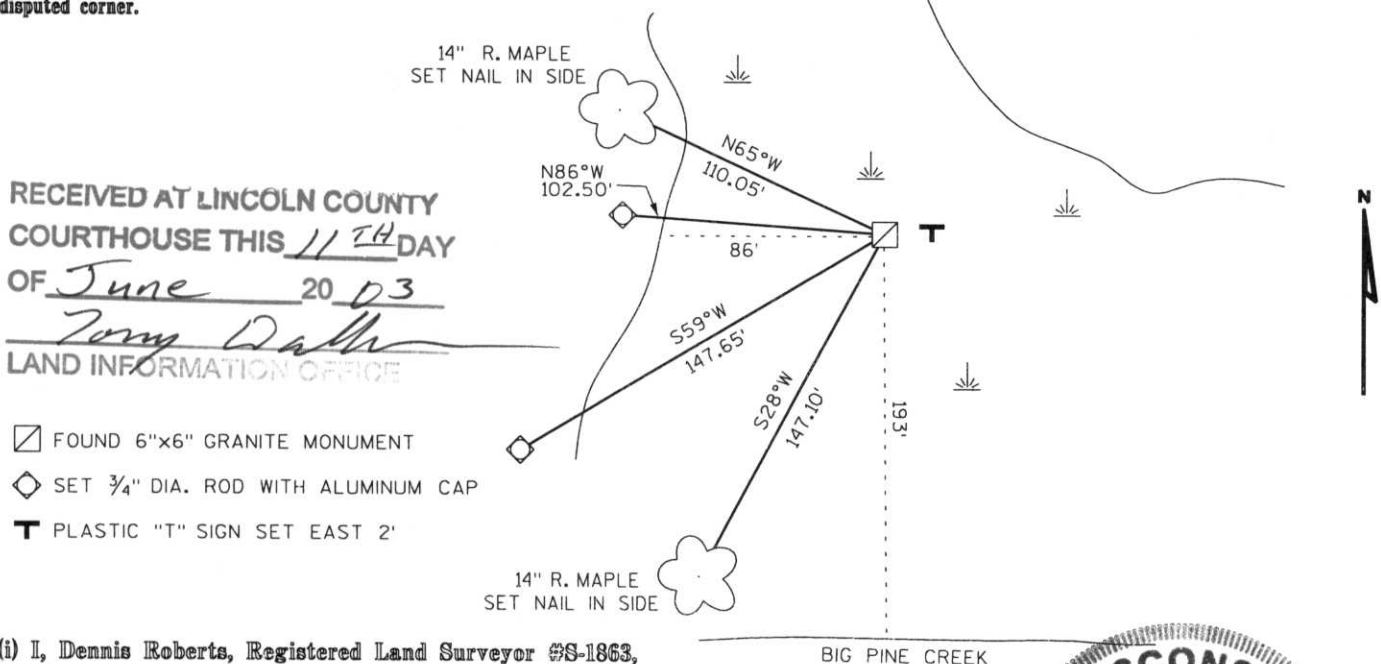
Pine stump tipped south N23°W 66.53'

8" dia. round post up 1.5' N49°W, 2'

Corner is in open meadow.

Witnessed corner as shown below.

(c)(d)(e) Plan view of corner with ties to at least 4 witness monuments. If in disagreement with previously established corner, show the distances between the two corners and also indicate the ties to the disputed corner.



RECEIVED AT LINCOLN COUNTY
COURTHOUSE THIS 11TH DAY
OF June 20 03
Tony Dalko
LAND INFORMATION OFFICE

- FOUND 6"x6" GRANITE MONUMENT
- SET 3/4" DIA. ROD WITH ALUMINUM CAP
- T** PLASTIC "T" SIGN SET EAST 2'

(i) I, Dennis Roberts, Registered Land Surveyor #S-1863, hereby certify that the corner location on this record was determined by me or under my direction and control and that this U.S. Public Land Survey Monument Record is correct and complete to the best of my knowledge and belief.

BIG PINE CREEK



Index No. *****
5-21

Dennis B. Roberts
Signature

5/29/03
Date

