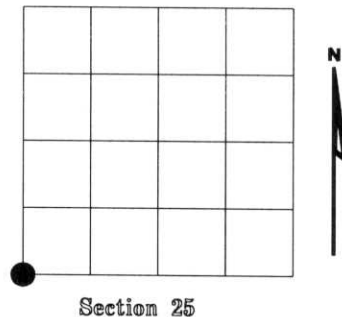


U.S. PUBLIC LAND SURVEY MONUMENT RECORD

NOTE: This form is intended and designed to fulfill all requirements of Wisconsin Administrative Code, Chapter A-E 7.08 U.S. Public Land Survey Monument Record (3)(a)(b)(c)(d)(e)(f)(g)(h)(i). An additional sheet may be added if necessary to conform with said requirements.

(a) Corner location: Township 35 North
 Range 08 East
 Town of HARRISON
 LINCOLN County, Wisconsin



(b)(f)(g)(h) Description of monument found at this corner and if it was accepted, state all evidence (material, testimonial, occupational, plats, records, other monuments) used as a basis for accepting. If not accepted or if nothing was found, state evidence used as basis for establishing location. If reestablished through lost corner proportionate methods, indicate all monuments, distances and directions used to establish. Indicate type of monument found or set and sign post.

1865- Original corner set by Jas. L. Nowlin

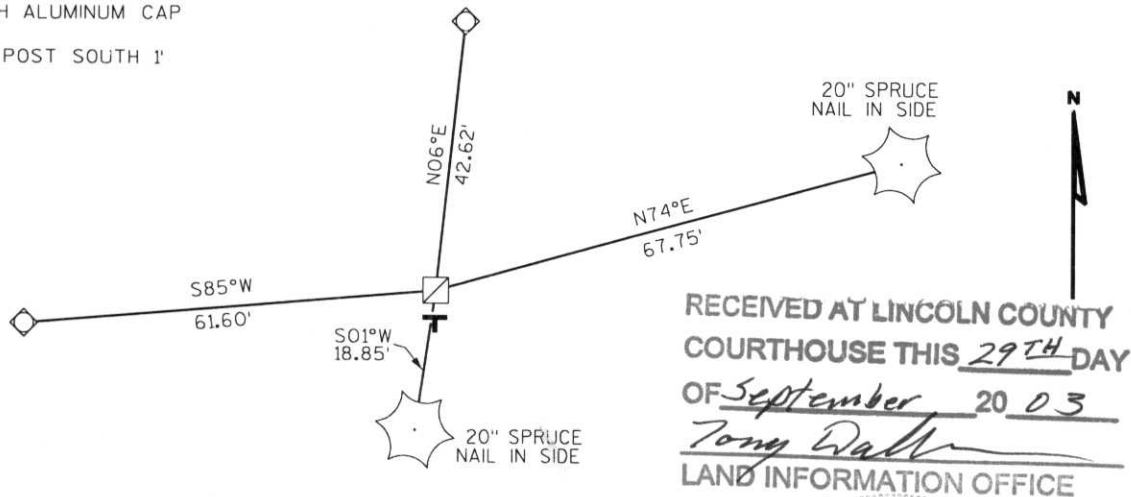
1937- Francis Fuchs - found old stake B.T. and blaze line.
 Set 6" x 6" granite stone, mounded with stone.
 Old Hemlock BT N82°W 28 Lks.
 Aspen 6" S42°E 46.5 Lks.
 Cherry 2 1/2" S48°W 45.8 Lks.
 Aspen 5" N37°E 87.9 Lks.

2003- I found 6" x 6" granite stone, tipped to Southeast in mound of stone. Straightened and mounded with stone.

Witnessed corner as shown below.

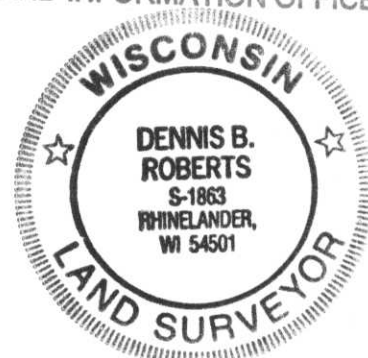
(c)(d)(e) Plan view of corner with ties to at least 4 witness monuments. If in disagreement with previously established corner, show the distances between the two corners and also indicate the ties to the disputed corner.

- FOUND 6" x 6" GRANITE MONUMENT
- SET 3/4" ROD WITH ALUMINUM CAP
- PLASTIC "T" SIGN POST SOUTH 1'



(i) I, Dennis Roberts, Registered Land Surveyor #S-1863, hereby certify that the corner location on this record was determined by me or under my direction and control and that this U.S. Public Land Survey Monument Record is correct and complete to the best of my knowledge and belief.

Dennis B. Roberts 7/09/03
 Signature Date



Index No. *****

U-21

