

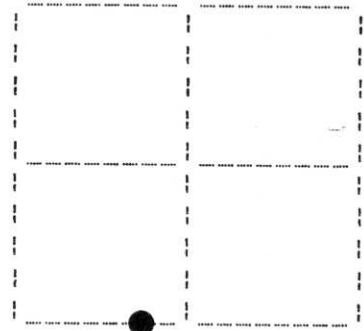
**U. S. PUBLIC LAND SURVEY MONUMENT RECORD**

Note: This form is intended and designed to fulfill all requirements of Wisconsin Administrative Code, Chapter A-E 7.08 U.S. Public Land Survey Monument Record(3)(a)(b)(c)(d)(e)(f)(g)(h)(i). An additional sheet may be added if necessary to conform with said requirements.

(a) Corner location: Township 35 North  
Range 8 East

Town of Harrison

Lincoln County, Wisconsin



MEANDER CORNER  
Section 24

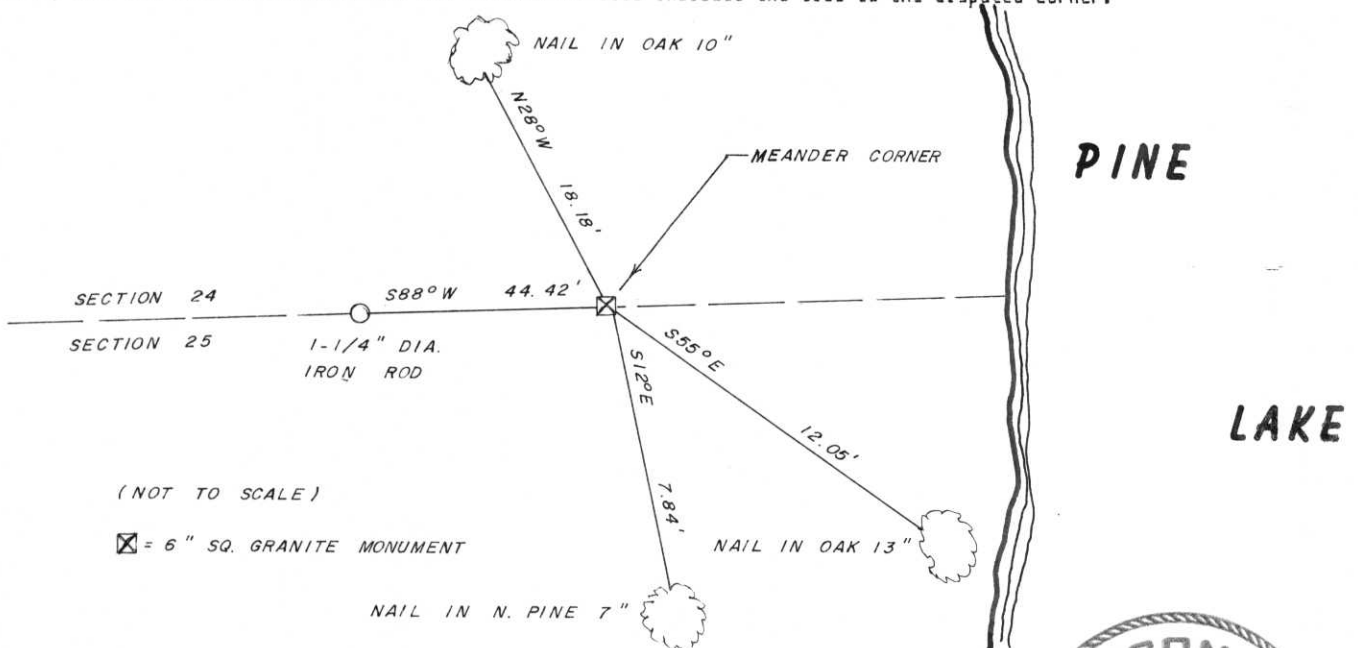
(b)(f)(g)(h) Description of monument found at this corner and if it was accepted, state all evidence (material, testimonial, occupational, plats, records, other monuments) used as a basis for accepting. If not accepted or if nothing was found, state evidence used as basis for establishing location. If reestablished through lost corner proportionate methods, indicate all monuments, distances and directions used to establish. Indicate type of monument found or set and sign post.

Survey map by Fisher, Inman, Foltz & Associates shows corner as 6"x6" granite monument found in place.

April 14, 1990: I found and accepted a 6" square granite monument near the waters edge of Pine Lake. I established the following witnesses: set nail in N.Pine 7" S12°E, 7.84', set nail in Oak 13" S55°E, 12.05', set nail in Oak 10" N28°W, 18.18', found 1-1/4" dia. iron rod S88°W, 44.42'.

RECEIVED AT LINCOLN COUNTY  
COURTHOUSE THIS 24th DAY  
OF May 19 90  
Pat Driebe  
TAX DESCRIPTION OFFICE

(c)(d)(e) Plan view of corner with ties to at least four witness monuments. If in disagreement with previously established corner, show the distances between the two corners and also indicate the ties to the disputed corner.



I, Jeffrey W. Austin, Registered Land Surveyor S-1885 certify that the corner location on this record was determined by me or under my direction and control and that this U.S. Public Land Survey Monument Record is correct and complete to the best of my knowledge and belief.



Signature: [Handwritten Signature] Date: MAY 13, 1990

Q, 22-23