

U.S. PUBLIC LAND SURVEY MONUMENT RECORD

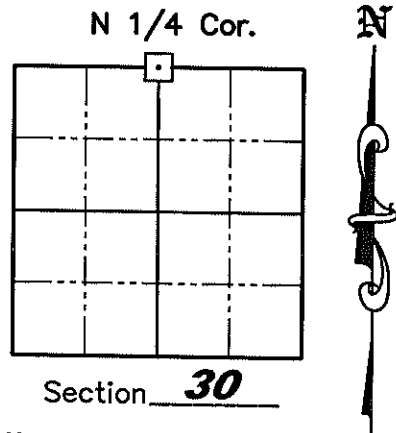
NOTE: This form is intended and designed to fulfill all requirements of Wisconsin Administrative Code, Chapter A-E 7.08 U.S. Public Land Survey Monument Record (3)(a)(b)(c)(d)(e)(f)(g)(h)(i). An additional sheet may be added if necessary to conform with said requirements.

(a) Corner location: Township 35 North

Range 8 East

Town of Harrison

County of Lincoln



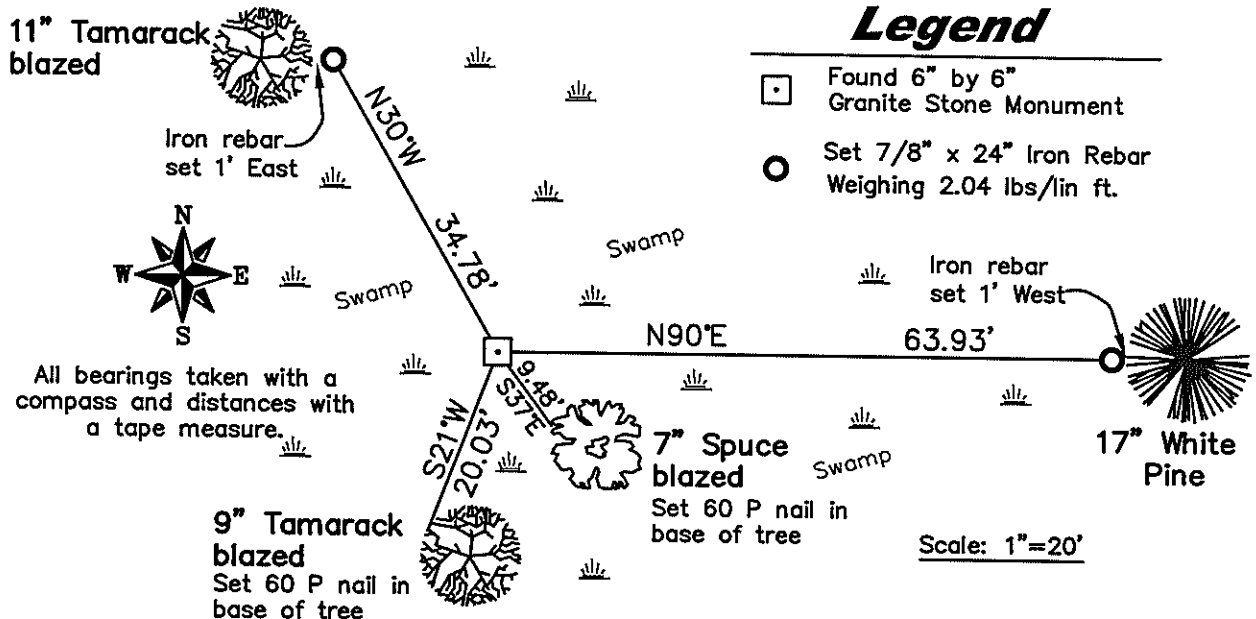
(b)(f)(g)(h) Description of monument found at this corner and if it was accepted, state all evidence (material, testimonial, occupation, plats, records, other monuments) used as a basis for accepting. If not accepted or if nothing was found, state evidence used as a basis for establishing location. If reestablished through lost corner proportionate methods, indicate all monuments, distances and directions used to establish. Indicate type of monument found or set and sign post.

April 1865 – J.L. Nowlin set original 1/4 post; BT's: 5" Spruce, S26°W, 9 links; 5" Spruce, S10°E, 2 links.

1937 – Francis Fuchs set 6" by 6" Granite Stone Monument. BT's 4-1/2" Spruce, N14°W, 30 links; 9" White Pine, S10°E, 125 links. (See Plat of Survey with a Lincoln County Land Information Office Map Number of L280A.)

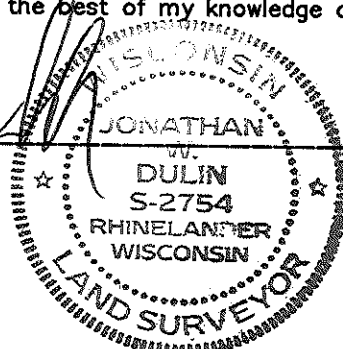
September 4, 2008 – Jonathan W. Dulin found and accepted a 6" by 6" Granite Stone Monument up 1-1/2' in the swamp. We set new witness corners as shown below.

(c)(d)(e) Plan view of corner with ties to at least 4 witness monuments. If in disagreement with previously established corner, show the distances between the two corners and also indicate the ties to the disputed corner.



(i) I, Jonathan W. Dulin, certify that the corner location on this record was determined by me under my direction and control and that this U.S. Public Land Survey Monument is correct and complete to the best of my knowledge and belief.

Signature Jonathan W. Dulin Date 9/11/08



RECEIVED BY LINCOLN COUNTY SURVEYOR THIS 28TH DAY OF October 2008
Tony Dull
 COUNTY SURVEYOR

Index No: Q-3