

U S PUBLIC LAND SURVEY MONUMENT RECORD

NOTE: This form is intended and designed to fulfill all requirements of Wisconsin Administrative Code, Chapter A-E 7.08 U.S. Public Land Survey Monument Record (3) (a-i)

A-E 7.08(3)(a) Identity of corner:
 SOUTHEAST CORNER SECTION 19,
 TOWNSHIP 35 NORTH,
 RANGE 08 EAST OF THE 4TH PM,
 TOWN OF HARRISON,
 COUNTY OF LINCOLN

WISCORS - LINCOLN COUNTY
 N: 237,356.586 USft (237,356.714)
 E: 433,257.742 USft (433,257.629)
 Datum: NAD83 (2011)
 GNSS Method RTN - Direct
 GNSS Control WISCORS VRS



The coordinate value shown has been verified by the average of two or more GPS observations at a markedly different time. Coordinates shown in parenthesis are provided by Lincoln County.

A-E 7.08(3)(b)

Original Surveyor: James L. Nowlin

Date of Original Survey Commenced: April 5, 1865
 Completed: April 15, 1865

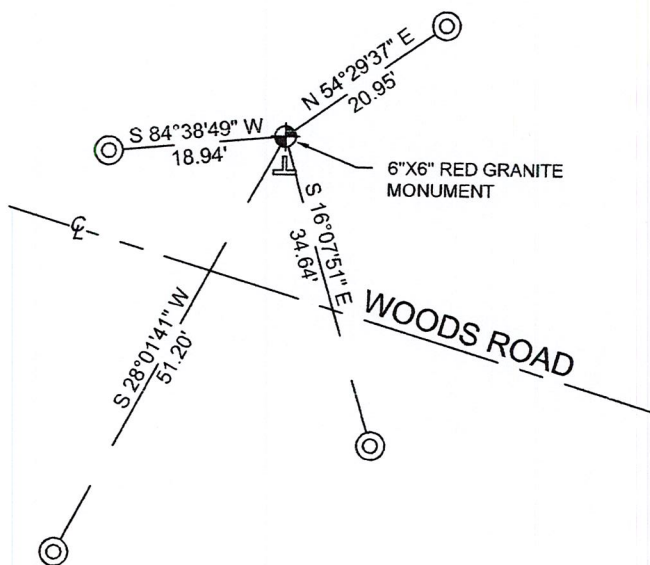
Original Accessories:
 W. Pine 10 N 15° E 7 Links
 W. Pine 10 S 40° E 51 Links
 Hemlock 8 No bearing / distance listed
 Hemlock 8 No bearing / distance listed

1937 - Surveyor Francis Fuchs (aka Francis Fox) was known to set granite monuments in this area. Lincoln County map L280A & L280B.

May 6, 2015 - Surveyor 2405 - Anthony R. Dallman - indicates this position as "6" x 6" granite stone monument, found in place" on Lincoln County map S534B.

November 1, 2022 - While performing the 2022 Lincoln County PLSS Corner Remonumentation and GPS Services project, I found a 6" x 6" red granite stone near the computed position provided by Lincoln County. The monument is ±17 feet north of a woods road centerline. I established 4 new reference monuments as shown below.

A-E 7.08(3)(c)(d) Plan view of corner with references to at least 4 witness monuments.



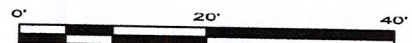
BEARINGS LISTED TO THE NEAREST SECOND ARE REFERENCED TO WISCONSIN COUNTY COORDINATE REFERENCE SYSTEM - LINCOLN COUNTY ZONE. ALL OTHER BEARINGS ARE MAGNETIC



RECEIVED BY LINCOLN COUNTY
 SURVEYOR THIS 27TH DAY
 OF December 20 22
Jeffrey DeMuth
 COUNTY SURVEYOR

LEGEND

- 6" x 6" red granite monument, found
- 7/8" diameter X 30" long - iron rod with 2" diameter aluminum cap, set
- Vinyl T-post, set ±3.1 feet south of corner



A-E 7.08(3)(e) 1865 Surveyor set a post, 1937 Surveyor set a granite stone monument, 2015 Surveyor found a 6" x 6" granite stone. I found a 6" x 6" red granite stone.

A-E 7.08(3)(f) I accept this monument as a FOUND PERPETUATED LOCATION of the corner.

A-E 7.08(3)(g)(h) This corner was not determined through lost-corner-proportionate methods.

A-E 7.08(3)(i) I, Jeffrey L. DeMuth, Professional Land Surveyor No. S-2656, hereby certify that the corner location on this record was determined by the Lincoln County Surveyor, and the monuments found or set as shown hereon were measured by me or under my direction and control, and that this U.S. Public Land Survey Monument Record is correct and complete to the best of my knowledge, and belief.



SIGNATURE

Jeffrey L. DeMuth

December 14, 2022

DATE

0-5

REPORT

2022-Lincoln County PLSS Corner Remonumentation and GPS Services

Wisconsin Corner Point Identification Number: 43508190000

Surveyor: Jeffrey L. DeMuth – S2656

Corner monument: Found 6" x 6" red granite stone.

Field Book: Cardinal North – Lincoln Co. Remon. – 2022-00

Page: 62

Horizontal Datum: WisCRS – Lincoln County Zone – NAD83(2011)

Date / time of initial measurement:

November 01, 2022 - Start 12:47:05 CDT – End 13:01:22 CDT

Reference monuments:

4 – Set - 7/8" diameter X 30" long iron rods with 2" diameter Lincoln Co. aluminum cap.

Coordinate Table

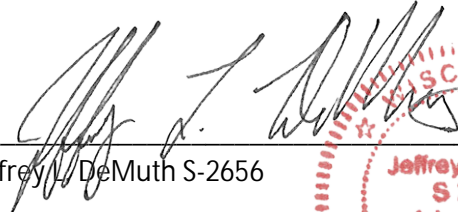
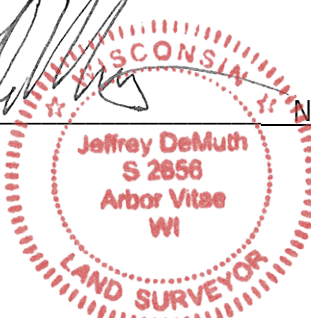
	County Provided	2022 Measurement	Difference
North	237356.714	237356.586	0.13
East	433257.629	433257.742	-0.11

Observed coordinates match with existing coordinates within reason.

Request Data Log for more information.

Additional Notes:

Monument falls ± 17 feet north of a private woods road centerline.


 Jeffrey L. DeMuth S-2656
 
 November 15, 2022
 Date

43508190000_Mon-N



43508190000_North



43508190000_West



4350819000_South



43508190000_East

