

# U S PUBLIC LAND SURVEY MONUMENT RECORD

NOTE: This form is intended and designed to fulfill all requirements of Wisconsin Administrative Code, Chapter A-E 7.08 U.S. Public Land Survey Monument Record (3) (a-i)

A-E 7.08(3)(a) Identity of corner:  
 SOUTH 1/4 CORNER SECTION 16,  
 TOWNSHIP 35 NORTH,  
 RANGE 08 EAST OF THE 4TH PM,  
 TOWN OF HARRISON,  
 COUNTY OF LINCOLN

WISCORS - LINCOLN COUNTY  
 N: 242,681.373 USft (242,681.233)  
 E: 440,953.983 USft (440,953.983)  
 Datum: NAD83 (2011)  
 GNSS Method RTN - Direct  
 GNSS Control WISCORS VRS



The coordinate value shown has been verified by the average of two or more GPS observations at a markedly different time. Coordinates shown in parenthesis are provided by Lincoln County.

A-E 7.08(3)(b)

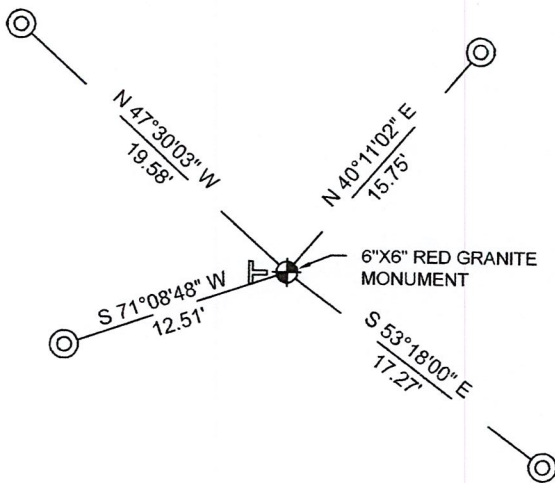
Original Surveyor: James L. Nowlin

Date of Original Survey	Commenced:	April 5, 1865	Original Accessories:		
	Completed:	April 15, 1865	Spruce	4	N 24° E 14 Links
			Spruce	4	S 32° W 16 Links

1937 - Surveyor Francis Fuchs (aka Francis Fox) was known to set granite monuments in this area. Lincoln County map L280A & L280B.

November 1, 2022 - While performing the 2022 Lincoln County PLSS Corner Remonumentation and GPS Services project, I found a 6"x6" red granite stone near the computed position provided by Lincoln County. Monument is in a black spruce swamp. I established 4 new reference monuments as shown below.

A-E 7.08(3)(c)(d) Plan view of corner with references to at least 4 witness monuments.



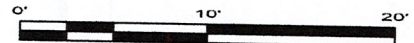
BEARINGS LISTED TO THE NEAREST SECOND ARE REFERENCED TO WISCONSIN COUNTY COORDINATE REFERENCE SYSTEM - LINCOLN COUNTY ZONE. ALL OTHER BEARINGS ARE MAGNETIC



RECEIVED BY LINCOLN COUNTY SURVEYOR THIS 27<sup>TH</sup> DAY OF December 20 22  
*James DeMuth*  
 COUNTY SURVEYOR

## LEGEND

- 6" x 6" red granite monument, found
- 1" diameter X 32" long - aluminum pipe with 2.5" diameter aluminum cap, set
- Vinyl T-post, set ±1.3 feet west of corner



A-E 7.08(3)(e) 1865 Surveyor set a post, 1937 Surveyor set a granite stone monument. I found a 6" x 6" red granite stone.

A-E 7.08(3)(f) I accept this monument as a FOUND PERPETUATED LOCATION of the corner.

A-E 7.08(3)(g)(h) This corner was not determined through lost-corner-proportionate methods.

A-E 7.08(3)(i) I, Jeffrey L. DeMuth, Professional Land Surveyor No. S-2656, hereby certify that the corner location on this record was determined by the Lincoln County Surveyor, and the monuments found or set as shown hereon were measured by me or under my direction and control, and that this U.S. Public Land Survey Monument Record is correct and complete to the best of my knowledge, and belief.

SIGNATURE

December 14, 2022

DATE



11-11

## REPORT

### 2022-Lincoln County PLSS Corner Remonumentation and GPS Services

Wisconsin Corner Point Identification Number: 43508160020

Surveyor: Jeffrey L. DeMuth – S2656

Corner monument: Found 6" x 6" red granite stone.

Field Book: Cardinal North – Lincoln Co. Remon. – 2022-00

Page: 63

Horizontal Datum: WisCRS – Lincoln County Zone – NAD83(2011)

Date / time of initial measurement:

November 01, 2022 - Start 14:12:04 CDT – End 14:35:36 CDT

Reference monuments:

4 – Set - 1" diameter X 32" long aluminum pipe with 2.5" diameter Lincoln Co. aluminum cap.

#### Coordinate Table

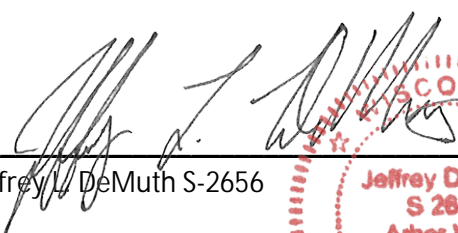
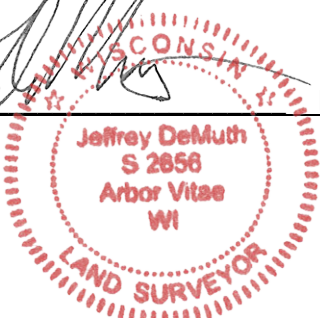
	County Provided	2022 Measurement	Difference
North	242681.233	242681.373	-0.14
East	440953.983	440953.983	0.00

Observed coordinates match with existing coordinates within reason.

Request Data Log for more information.

Additional Notes:

Corner falls in a black spruce swamp.

  
 Jeffrey L. DeMuth S-2656
 
 November 15, 2022  
 Date



43508160020\_Mon-N





43508160020\_North





43508160020\_West





43508160020\_South





43508160020\_East

