

U S PUBLIC LAND SURVEY MONUMENT RECORD

NOTE: This form is intended and designed to fulfill all requirements of Wisconsin Administrative Code, Chapter A-E 7.08 U.S. Public Land Survey Monument Record (3) (a-i)

A-E 7.08(3)(a) Identity of corner:
 SOUTHEAST CORNER SECTION 16,
 TOWNSHIP 35 NORTH,
 RANGE 08 EAST OF THE 4TH PM,
 TOWN OF HARRISON,
 COUNTY OF LINCOLN

WISCORS - LINCOLN COUNTY
 N: 242,805.449 USft (242,805.308)
 E: 443,597.345 USft (443,597.200)
 Datum: NAD83 (2011)
 GNSS Method RTN - Direct
 GNSS Control WISCORS VRS



The coordinate value shown has been verified by the average of two or more GPS observations at a markedly different time. Coordinates shown in parenthesis are provided by Lincoln County.

A-E 7.08(3)(b)

Original Surveyor: James L. Nowlin

Date of Original Survey Commenced: April 5, 1865
 Completed: April 15, 1865

Original Accessories:
 Hemlock 5 S 15° E 6 Links
 Hemlock 8 S 60° W 9 Links
 Hemlock 10 No bearing / distance listed
 Hemlock 8 No bearing / distance listed

1937 - Surveyor Francis Fuchs (aka Francis Fox) was known to set granite monuments in this area. Lincoln County map L280A & L280B.

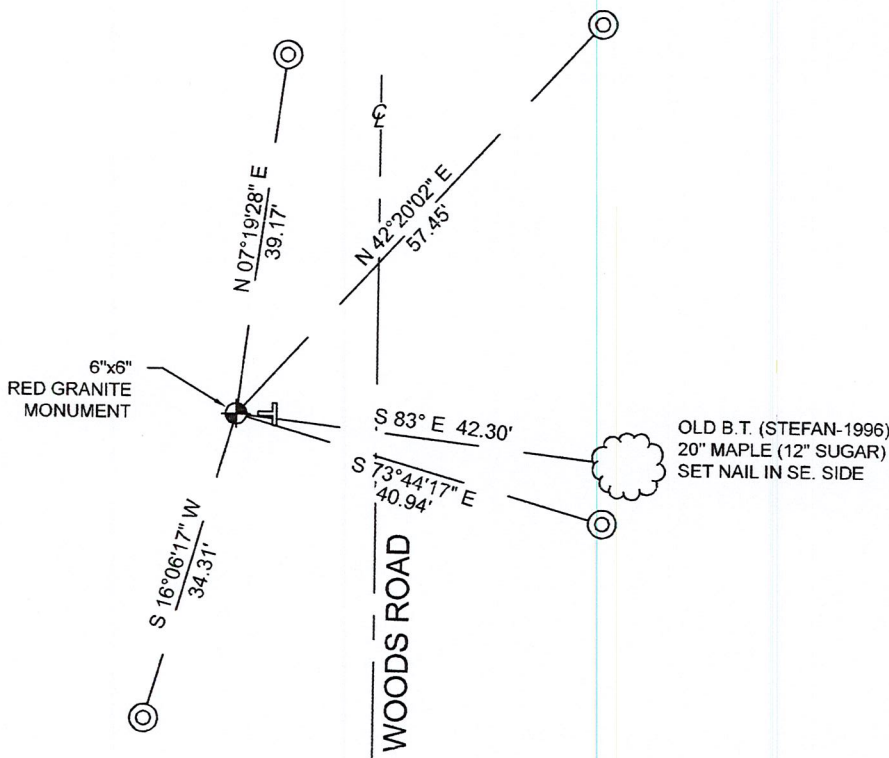
July 1, 1986 & March 21, 1988 - Surveyor 1192 - Lester J. Schmidt - indicate this position as "6" x 6" granite monument" on Lincoln County map L117A.

October 21, 1996 - Surveyor 1558 - Milo E. Steffan - indicates this position as "granite stone" on Lincoln County map S136A-B.

May 2, 2001 - Surveyor 2343 - Kevin P. Bixby - indicates this position as "existing granite monument" on Lincoln County map M450A.

November 16, 2022 - While performing the 2022 Lincoln County PLSS Corner Remonumentation and GPS Services project, I found a 6" x 6" red granite stone near the computed position provided by Lincoln County. The monument extends ±8" above grade, and is ±15 feet west of a woods road centerline. I established 4 new reference monuments as shown below.

A-E 7.08(3)(c)(d) Plan view of corner with references to at least 4 witness monuments.

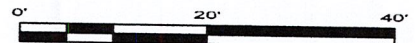


BEARINGS LISTED TO THE NEAREST SECOND ARE REFERENCED TO WISCONSIN COUNTY COORDINATE REFERENCE SYSTEM - LINCOLN COUNTY ZONE. ALL OTHER BEARINGS ARE MAGNETIC

RECEIVED BY LINCOLN COUNTY SURVEYOR THIS 27TH DAY OF December 20 22
James DeMuth
 COUNTY SURVEYOR

LEGEND

- 6" x 6" red granite monument, found
- 7/8" diameter X 30" long - iron rod with 2" diameter aluminum cap, set
- Vinyl T-post, set ±3 feet east of corner



A-E 7.08(3)(e) 1865 Surveyor set a post, 1937 Surveyor set a granite stone monument, 1986, 1988, 1996 & 2001 Surveyors found a granite stone. I found a 6" x 6" red granite stone.

A-E 7.08(3)(f) I accept this monument as a FOUND PERPETUATED LOCATION of the corner.

A-E 7.08(3)(g)(h) This corner was not determined through lost-corner-proportionate methods.

A-E 7.08(3)(i) I, Jeffrey L. DeMuth, Professional Land Surveyor No. S-2656, hereby certify that the corner location on this record was determined by the Lincoln County Surveyor, and the monuments found or set as shown hereon were measured by me or under my direction and control, and that this U.S. Public Land Survey Monument Record is correct and complete to the best of my knowledge, and belief.

SIGNATURE

December 14, 2022

DATE



M-13

REPORT

2022-Lincoln County PLSS Corner Remonumentation and GPS Services

Wisconsin Corner Point Identification Number: 43508160000

Surveyor: Jeffrey L. DeMuth – S2656

Corner monument: Found 6" x 6" red granite stone.

Field Book: Cardinal North – Lincoln Co. Remon. – 2022-00

Page: 68

Horizontal Datum: WisCRS – Lincoln County Zone – NAD83(2011)

Date / time of initial measurement:

November 16, 2022 - Start 14:30:35 CST – End 14:49:15 CST

Reference monuments:

4 – Set - 7/8" diameter X 30" long iron rods with 2" diameter Lincoln Co. aluminum cap.

1 – Found – Bearing Tree by others.

Coordinate Table

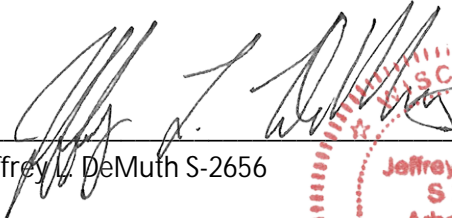
| | County Provided | 2022 Measurement | Difference |
|-------|-----------------|------------------|------------|
| North | 242805.308 | 242805.449 | -0.14 |
| East | 443597.200 | 443597.345 | -0.14 |

Observed coordinates match with existing coordinates within reason.

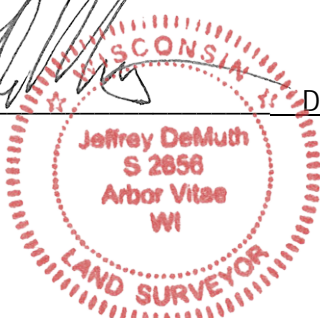
Request Data Log for more information.

Additional Notes:

Corner falls ±15 feet west of private woods road.


Jeffrey L. DeMuth S-2656

December 01, 2022
Date



43508160000_Mon-N



4350816000_North



4350816000_West



4350816000_South



43508160000_East

