

CERTIFIED LAND CORNER RESTORATION

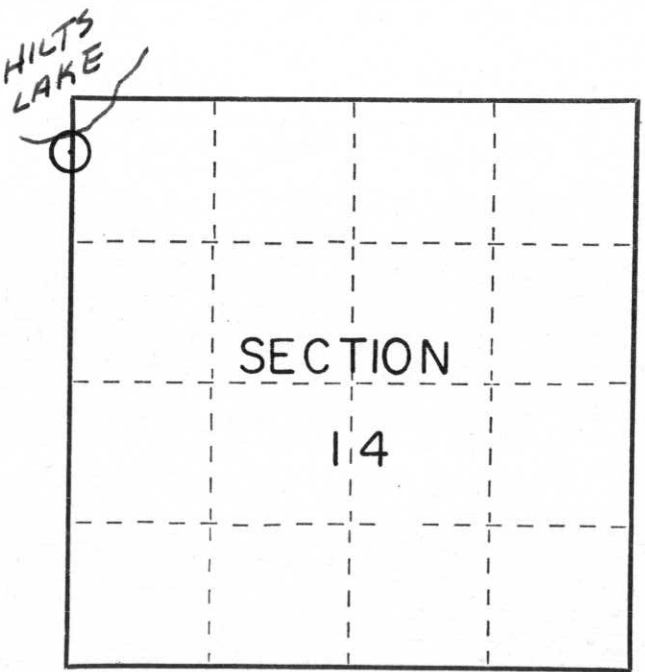
Index No. I-5, 17

State of Wisconsin }  
County of LINCOLN } ss.

I William Immich, do hereby certify that on the 6th day of APRIL, 1985, I found evidence of the M.C. SOUTH ON HILTS LK. corner of SECTION 14 Township 35, North, Range 8 EAST, Fourth, Principal Meridian, as described hereon; and that from this evidence I established a new monument and accessories as described hereon to perpetuate the original location of this corner.

Resident witnesses:

.....  
.....  
.....



○ = Corner monument restored.

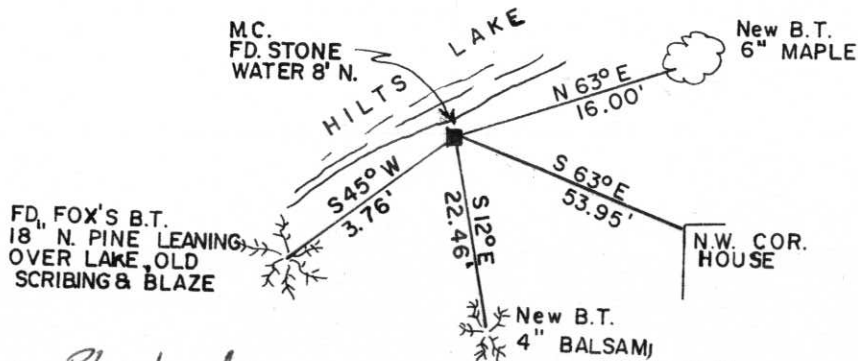
History of original corner establishment:

1865 NOWLIN GOV'T SURVEYOR : NORTH BET. 14+15 VAR 8° E  
71.00 INTERSECT LAKE AND SET M.C. BIRCH 10 S 9 W 25 IK  
BIRCH 4 S 67 E 8 IK  
F. FOX RAN FROM NW COR. SECTION 11 TO WEST 1/4 COR SECTION 14 121.97, AT STA. 91.97 OFFSET WEST 138 LK TO EDGE OF LAKE SET M.C. NORWAY PINE 13 S 50 W 7 IK SUGAR 12 N 41 E 60 IK (NORWAY HAS OLD M.C. BT INSCRIBED ON IT - NOT ORIGINAL BUT ABOUT 25-30 YEARS AGO)

Description of corner evidence found:  
I FOUND SQUARE STONE IN GOOD CONDITION & FOX'S WITNESS AS SHOWN BELOW. I SET A 1" IRON PIPE ALONGSIDE THE N.E. CORNER.



Description of monument and accessories I established to perpetuate the original location of this corner:



- MAGNETIC BEARINGS WITH HAND COMPASS  
- DISTANCES TO NAIL IN TREE

Dated at Rhineland, Wis., this 7th day of APRIL, 1985.

Signature William Immich Title R.L.S. Registration No. 1383  
(County Surveyor, Registered Land Surveyor, or other duly authorized official)

Office of Register of Deeds, County of \_\_\_\_\_, I hereby certify that the within instrument was filed in this office for record on the \_\_\_\_\_ day of \_\_\_\_\_, 19\_\_\_\_ at \_\_\_\_\_ o'clock \_\_\_\_\_ M.

.....  
(Register of Deeds)

By \_\_\_\_\_ Deputy

# U.S. PUBLIC LAND SURVEY MONUMENT RECORD

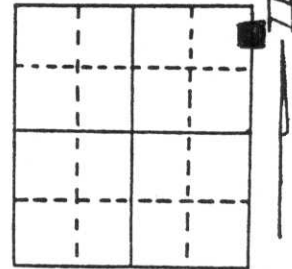
**Note:** This form is intended and designed to fulfill all requirements of Wisconsin Administrative Code, Chapter A-E 5.02, U.S. Public Land Survey Monument Record (3) (a) (b) (c) (d) (e) (f) (g) (h) (i). An additional sheet may be added if necessary to conform with said requirements.

(a) Corner location: Township 35 North

Range 8 East

Town/City/Village Harrison

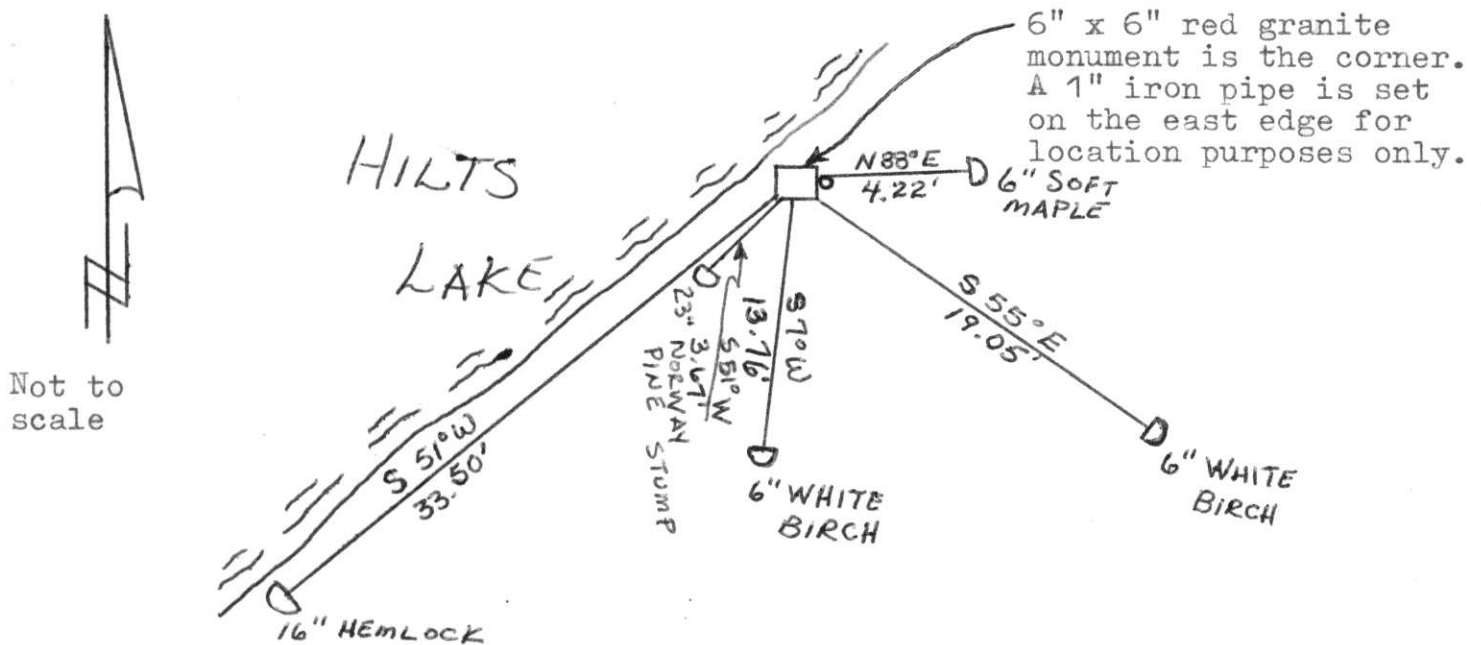
County Lincoln



Section 15

(b) (f) (g) (h) Description of monument found at this corner and if it was accepted, state all evidence (material, testimonial, occupational, plats, records, other monuments) used as a basis for accepting. If not accepted or if nothing was found, state evidence used as basis for establishing location. If reestablished through lost corner proportionate methods, indicate all monuments, distances and directions used to establish. Original Gov't. Survey: 7 April 1865 by James L. Nowlin, set wood post for corner with bearings, birch 10 S 9° W 25 links & birch 4 S 67° E 8 links. During a survey in the 1930's, Francis Fox set a 6" x 6" red granite monument for the Meander Corner location and witnessed it with a norway pine 13" S 50° W 7 links and a sugar 12 N 41° E 60 links. Wind has blown the sugar down since. The norway has old M.C. B.T. inscribed on it - not original but about 25-30 years old. I found the red granite monument which is the corner and the norway pine is now a 23" diameter, 6' high stump. I made the witnesses as shown below.

(c) (d) (e) Plan view of corner with ties to at least 4 witness monuments. If in disagreement with previously established corner, show the distances between the two corners and also indicate the ties to the disputed corner.



Not to scale

(i) I, Lester J. Schmit

(type or print name) certify that the corner location on this record was determined by me or under my direction and control and that this U.S. Public Land Survey Monument Record is correct and complete to the best of my knowledge and belief.

Lester J. Schmit  
Signature

5 Nov 92  
Date



Index No. 57