

LINCOLN COUNTY SECTION SUMMARY

LEGEND

- FOUND GRANITE MONUMENT
- FOUND LINCOLN COUNTY MONUMENT
- SET LINCOLN COUNTY MONUMENT
- COORDINATES PER ONEIDA COUNTY

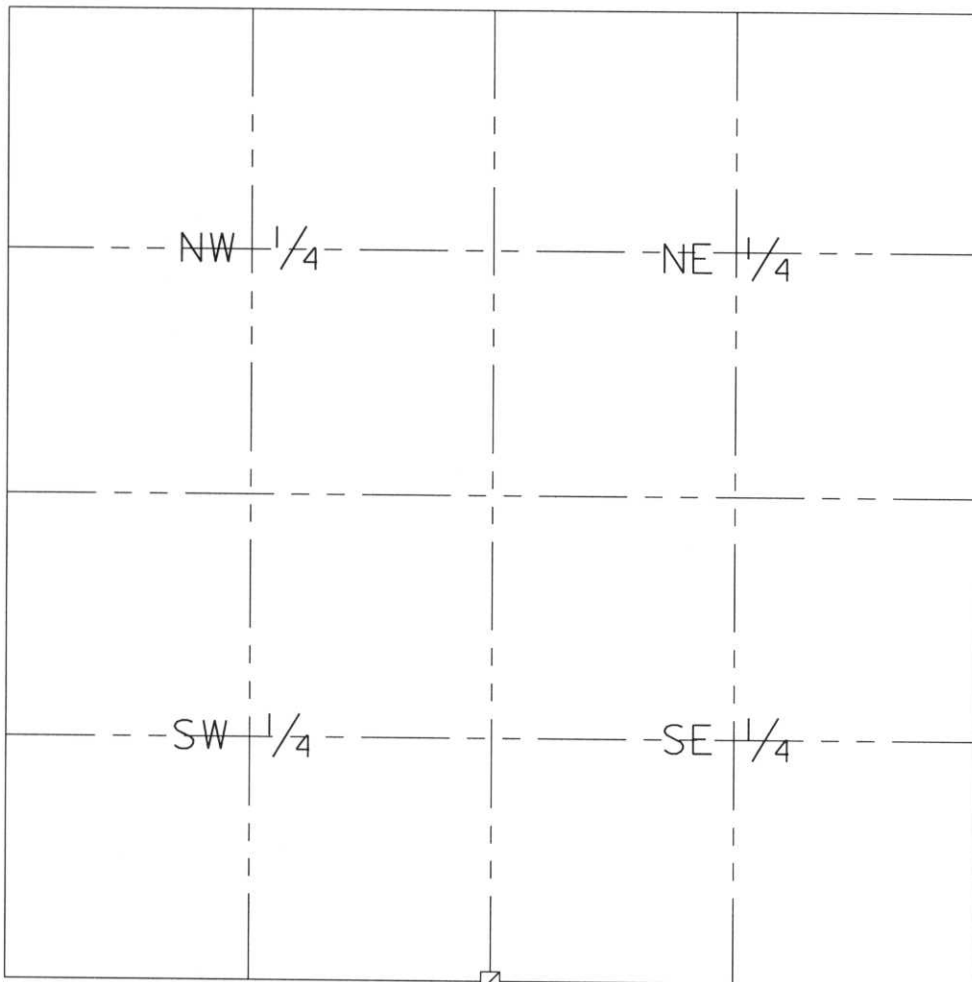
SECTION SUMMARY

15
SECTION

35N
TOWNSHIP

8E
RANGE

HARRISON
TOWN



N 242937.85
E 446337.96

RECEIVED AT LINCOLN COUNTY
COURTHOUSE THIS 29th DAY
OF December 20 03
Tracy A. Rasmussen
LAND INFORMATION OFFICE

NOTES:
COORDINATES AND BEARINGS ARE REFERENCED TO THE LINCOLN COUNTY COORDINATE SYSTEM AS DEVELOPED BY THE WISCONSIN DEPARTMENT OF TRANSPORTATION AND WERE DETERMINED BY GPS OBSERVATIONS ON CONTROL POINTS AS SUPPLIED BY THE DOT.



CERTIFIED CORRECT:

Jeffrey L. Demuth
Signature Date 12/22/03

Index No. F.M. - 13, 17

M-15

U.S. PUBLIC LAND SURVEY MONUMENT RECORD

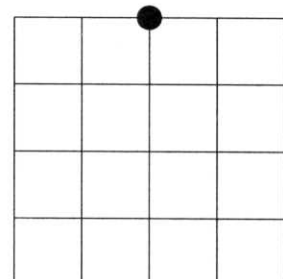
NOTE: This form is intended and designed to fulfill all requirements of Wisconsin Administrative Code, Chapter A-E 7.08 U.S. Public Land Survey Monument Record (3)(a)(b)(c)(d)(e)(f)(g)(h)(i). An additional sheet may be added if necessary to conform with said requirements.

(a) Corner location: Township 35 North

Range 08 East

Town of HARRISON

LINCOLN County, Wisconsin



Section 22

(b)(f)(g)(h) Description of monument found at this corner and if it was accepted, state all evidence (material, testimonial, occupational, plats, records, other monuments) used as a basis for accepting. If not accepted or if nothing was found, state evidence used as basis for establishing location. If reestablished through lost corner proportionate methods, indicate all monuments, distances and directions used to establish. Indicate type of monument found or set and sign post.

1865 - Original corner set by Jos. L. Nowlin

1935- Francis Fuchs set 6" x 6" granite stone mounded with stone, by proportional measurement.

Pine stump 28" N82°W 13.8 Lks.

Ash 3 1/2" S51°W 84.7 Lks.

2003- I found 6" x 6" granite stone mounded of stone

Fuchs - 28" Pine stump N82°W 9.11'

BTs by others with nail in side:

5" Balsam N52°W 4.6'

6" Balsam N18°E 15.8'

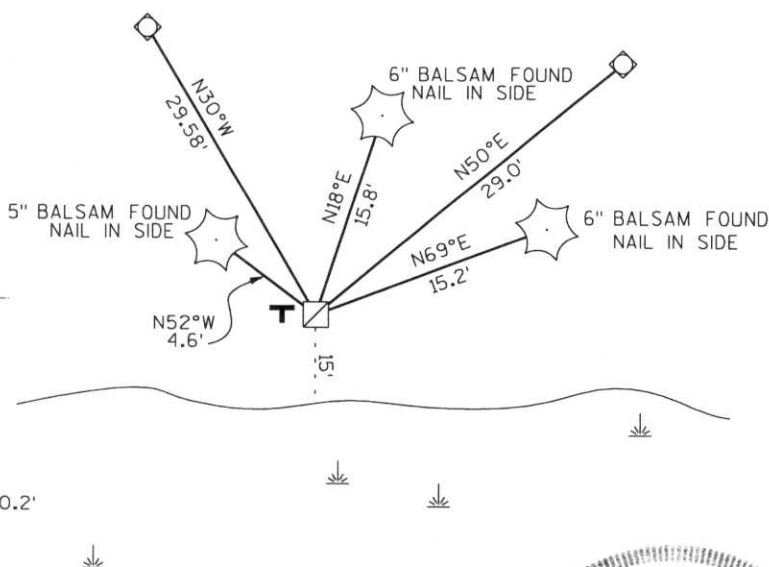
6" Balsam N69°E 15.2'

Plastic sign post West 0.2'

Witnessed corner as shown below.

(c)(d)(e) Plan view of corner with ties to at least 4 witness monuments. If in disagreement with previously established corner, show the distances between the two corners and also indicate the ties to the disputed corner.

RECEIVED AT LINCOLN COUNTY
COURTHOUSE THIS 10TH DAY
OF May 20 03
Zony Dalko
LAND INFORMATION OFFICE



- FOUND 6"x6" GRANITE MONUMENT
- SET 3/4 ROD WITH ALUMINUM CAP
- FOUND PLASTIC "T" SIGN POST WEST 0.2'

(i) I, Dennis Roberts, Registered Land Surveyor #S-1863, hereby certify that the corner location on this record was determined by me or under my direction and control and that this U.S. Public Land Survey Monument Record is correct and complete to the best of my knowledge and belief.



Index No. M-15

Dennis B. Roberts
Signature

5/02/03
Date



GB