

U.S. PUBLIC LAND SURVEY MONUMENT RECORD

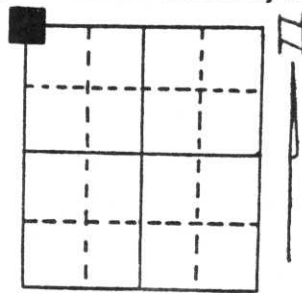
Note: This form is intended and designed to fulfill all requirements of Wisconsin Administrative Code, Chapter A-E 5.02, U.S. Public Land Survey Monument Record (3) (a) (b) (c) (d) (e) (f) (g) (h) (i). An additional sheet may be added if necessary to conform with said requirements.

(a) Corner location: Township 35 North

Range 8 East

Town/City/Village Harrison

County Lincoln



Section 23

(b) (f) (g) (h) Description of monument found at this corner and if it was accepted, state all evidence (material, testimonial, occupational, plats, records, other monuments) used as a basis for accepting. If not accepted or if nothing was found, state evidence used as basis for establishing location. If reestablished through lost corner proportionate methods, indicate all monuments, distances and directions used to establish.

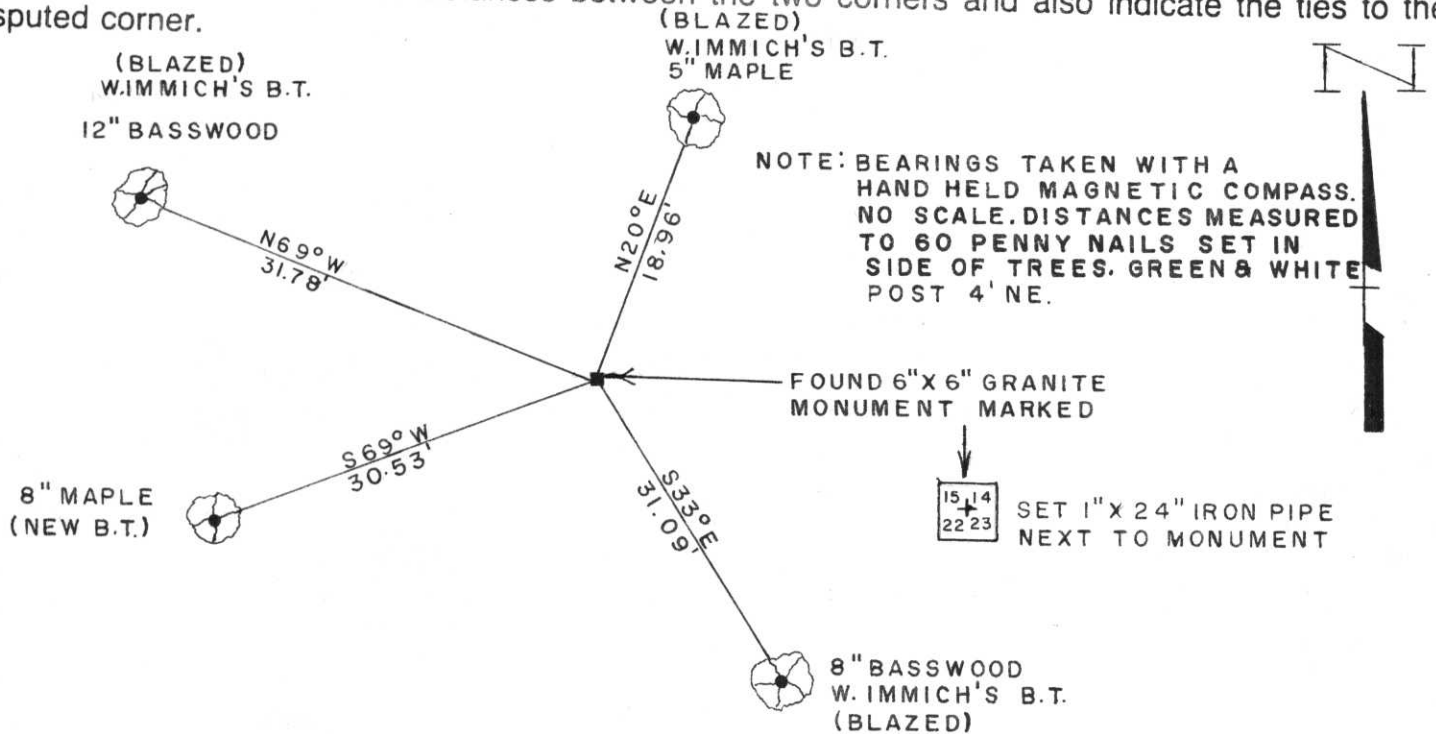
1865-J.L. Nowlin set corner to 14, 15, 22 & 23, B.T.'s are:
 8" Hemlock S 37° W 8 links, 8" Birch S 30° E 8 links,
 5" Hemlock, 4" Sugar Maple.

1937-F. Fox set Section Corners 14, 15, 22 & 23 by proportionate measurement between nearest section corners, B.T.s are 3" Maple S 73° W 50 links, 5" Maple N 64° E 49 links.

1979-William Immich found marble monument and indicates B.T.'s
 10" Basswood N 69° W 31.30', 4" H. Maple N 20° E 18.70',
 8" Basswood S 33° E 30.80', G & W post NE 4'.

1994-William E. Bandow found 6" X 6" granite monument and witnessed as shown below.

(c) (d) (e) Plan view of corner with ties to at least 4 witness monuments. If in disagreement with previously established corner, show the distances between the two corners and also indicate the ties to the disputed corner.



(i) I, WILLIAM E. BANDOW

(type or print name) certify that the corner location on this record was determined by me or under my direction and control and that this U.S. Public Land Survey Monument Record is correct and complete to the best of my knowledge and belief.

William E. Bandow

6-27-94

Signature

Date



Index No. M-17