

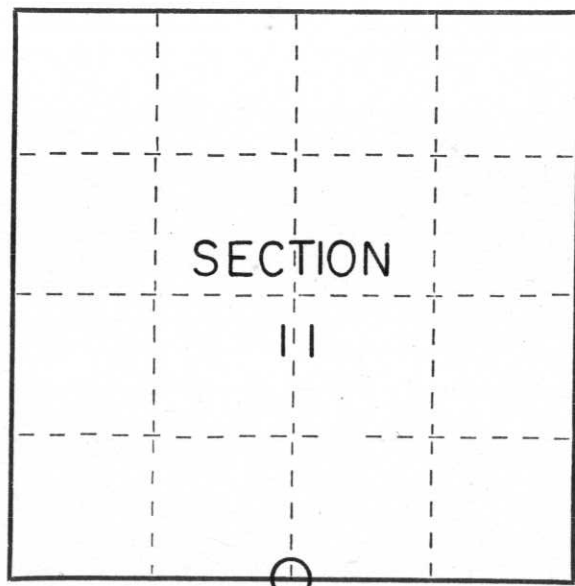
CERTIFIED LAND CORNER RESTORATION

Index No. I-19

State of Wisconsin }  
County of LINCOLN } ss.

I William Immich, do hereby certify that on the 6th day of APRIL, 1985, I found evidence of the SOUTH 1/4 corner of SECTION 11 Township 35, North, Range 8 EAST, Fourth, Principal Meridian, as described hereon; and that from this evidence I established a new monument and accessories as described hereon to perpetuate the original location of this corner.

Resident witnesses:



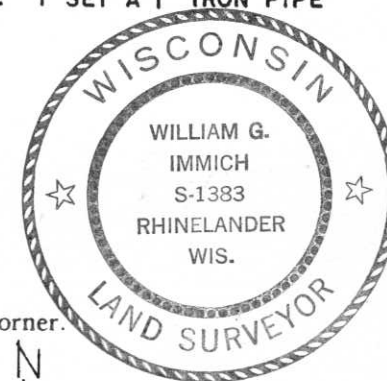
○ = Corner monument restored.

History of original corner establishment:

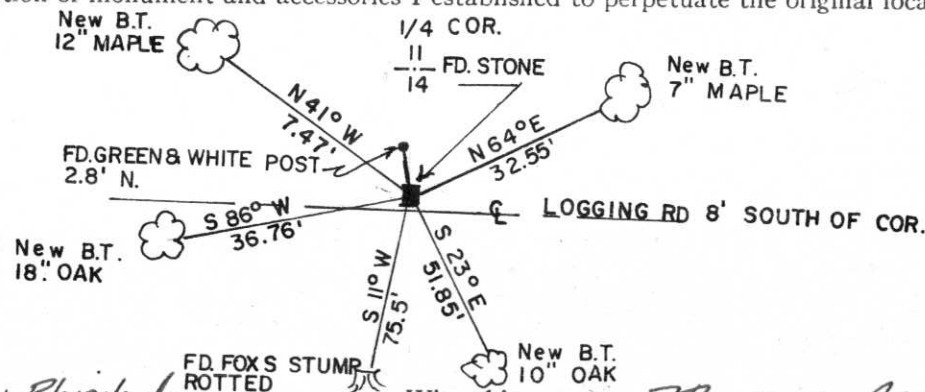
1865 NOWLIN - GOVT SURVEYOR: WEST ON TRUE LINE 40.20 SET 1/4 POST BIRCH 8 N SSE SIK BIRCH 12 S 70W ZZIK F. FOX 35.61 SET 1/4 COR BY PORPORTIONAL MEASUREMENT PINE STUMP S 11 W 115 IK HEMLOCK 6 N 62E 103.5 IK STONE IS IN OPEN CLEARING 2' NORTH OF AN OLD LOGGING ROAD

Description of corner evidence found:

1 FOUND SQUARE STONE IN GOOD CONDITION & FOX S WITNESS AS SHOWN BELOW. 1 SET A 1" IRON PIPE ALONG NORTH SIDE OF STONE.



Description of monument and accessories I established to perpetuate the original location of this corner.



N  
-MAGNETIC BEARINGS WITH HAND COMPASS  
-DISTANCES TO NAIL IN TREE

Dated at Rhineland, Wis., this 7th day of APRIL, 1985.

Signature William Immich Title R.L.S. Registration No. 1383  
(County Surveyor, Registered Land Surveyor, or other duly authorized official)

Office of Register of Deeds, County of \_\_\_\_\_, I hereby certify that the within instrument was filed in this office for record on the \_\_\_\_\_ day of \_\_\_\_\_, 19\_\_\_\_ at \_\_\_\_\_ o'clock \_\_\_\_\_ M.

(Register of Deeds)

By \_\_\_\_\_ Deputy