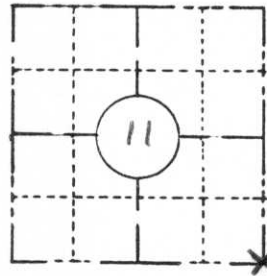


PRESERVATION OF LANDMARKS

(Pursuant to Section 59.635(7) Wisconsin Statutes)

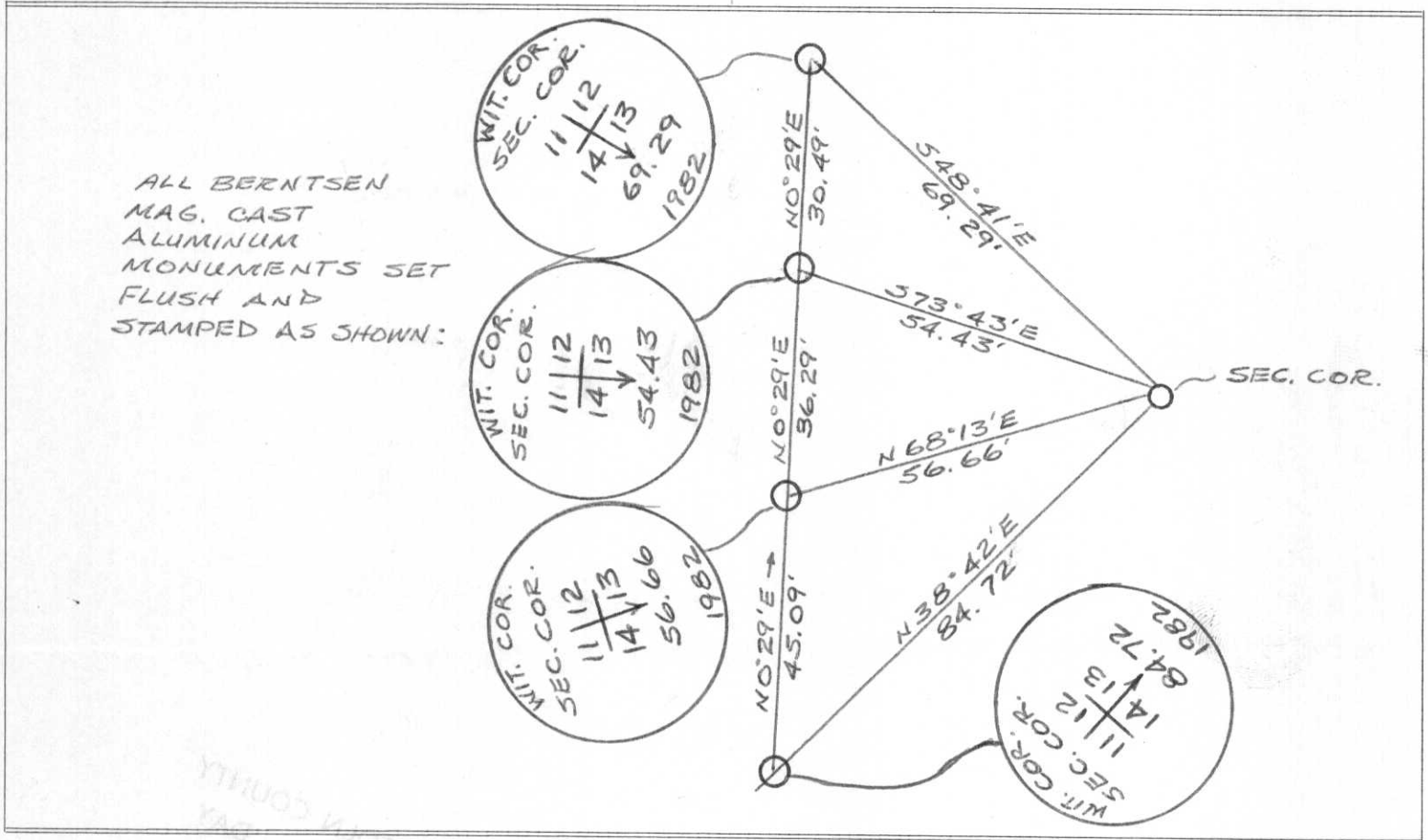
COUNTY <i>LINCOLN</i>		
TOWN <i>HARRISON</i>		
HIGHWAY <i>5TH 17</i>		
SECTION <i>11</i>	TOWNSHIP <i>35 N</i>	RANGE <i>8 E</i>
TYPE OF LANDMARK <i>3" I.P. WITH BRONZE CAP</i>		



LOCATION SKETCH
(Location of landmark indicated by "x")



This space for copy of field notes or ties to the above described landmarks



FILED UNDER PROJECT NUMBER <i>9031-3-71</i> <i>Gleason - No. Co. Line (5TH 17)</i>		
SHC DISTRICT OFFICE NUMBER <i>7</i>	CITY <i>Rhineland</i>	COUNTY <i>ONEIDA</i>
LOCATED OR ESTABLISHED BY AND REFERENCED BY NAME <i>JACK R. WALLIN</i> TITLE <i>Survey Crew Chief</i> DATE <i>5/19/82</i>		

COUNTY CLERK'S OFFICE COUNTY OF <i>Lincoln</i> WISCONSIN } ss	
DATE RECEIVED FOR RECORD <i>5/28/82</i>	DATE COPY SENT TO COUNTY SURVEYOR
SIGNATURE OF COUNTY CLERK <i>Ken Oldenburg</i>	

NOTE: This work done under the supervision of R. Donnevillle Survey Supervisor R.L.S. 5-1328

12-1