

U.S. PUBLIC LAND SURVEY MONUMENT RECORD

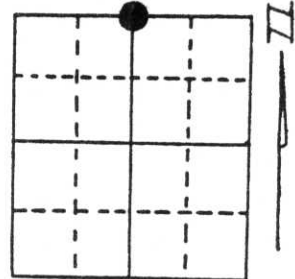
Note: This form is intended and designed to fulfill all requirements of Wisconsin Administrative Code, Chapter A-E 5.02, U.S. Public Land Survey Monument Record (3) (a) (b) (c) (d) (e) (f) (g) (h) (i). An additional sheet may be added if necessary to conform with said requirements.

(a) Corner location: Township 35 North

Range 8 East

Town/City/Village Harrison

County Lincoln

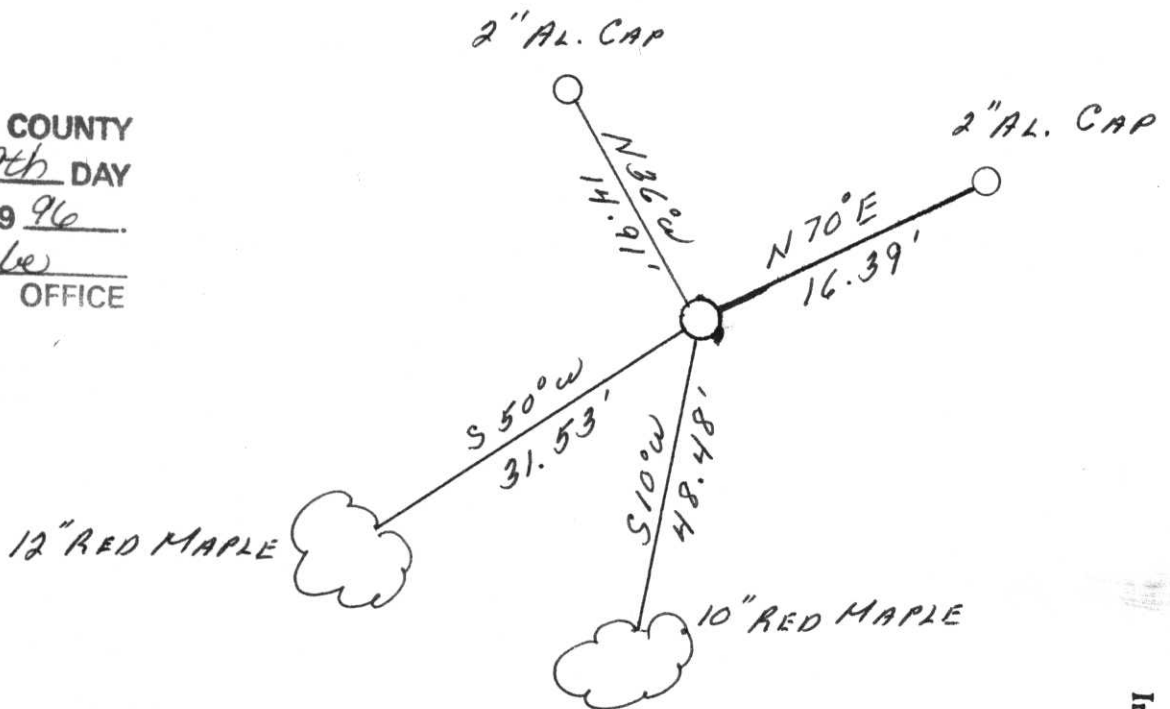


Section 15

(b) (f) (g) (h) Description of monument found at this corner and if it was accepted, state all evidence (material, testimonial, occupational, plats, records, other monuments) used as a basis for accepting. If not accepted or if nothing was found, state evidence used as basis for establishing location. If reestablished through lost corner proportionate methods, indicate all monuments, distances and directions used to establish.

This corner was restored by Lost Methods by Francis X. Fuchs in 1937. In 1975 and 1979 surveyor Herb Moore used this corner for C.S.M. numbers 99 and 110. Since Moore used this corner, road construction has destroyed and/or removed the granite stone and Tamarack "BT" that Fuchs placed. Upon restoring this corner position on the section line between the Section Corner Westerly and the Meander Corner Easterly and at 40.38 chains East of the Section Corner. The possible remains of Fuchs bearing tree (a 12" Red Pine) N57°W 72.4 links (47.8') was located. These remains are a positive stump hole and a turned up badly decayed Red Pine stump. As the exact location of Fuchs corner could not be positioned from one BT remains, the surveyed position was monumented as the best location of this corner.

(c) (d) (e) Plan view of corner with ties to at least 4 witness monuments. If in disagreement with previously established corner, show the distances between the two corners and also indicate the ties to the disputed corner.



RECEIVED AT LINCOLN COUNTY
COURTHOUSE THIS 29th DAY
OF Oct. 1996
Pat Priebe
TAX DESCRIPTION OFFICE

(i) I, Milo E. Stefan

(type or print name) certify that the corner location on this record was determined by me or under my direction and control and that this U.S. Public Land Survey Monument Record is correct and complete to the best of my knowledge and belief.

Milo E. Stefan
Signature

October 26, 1996
Date



Index No. 345
I-15