

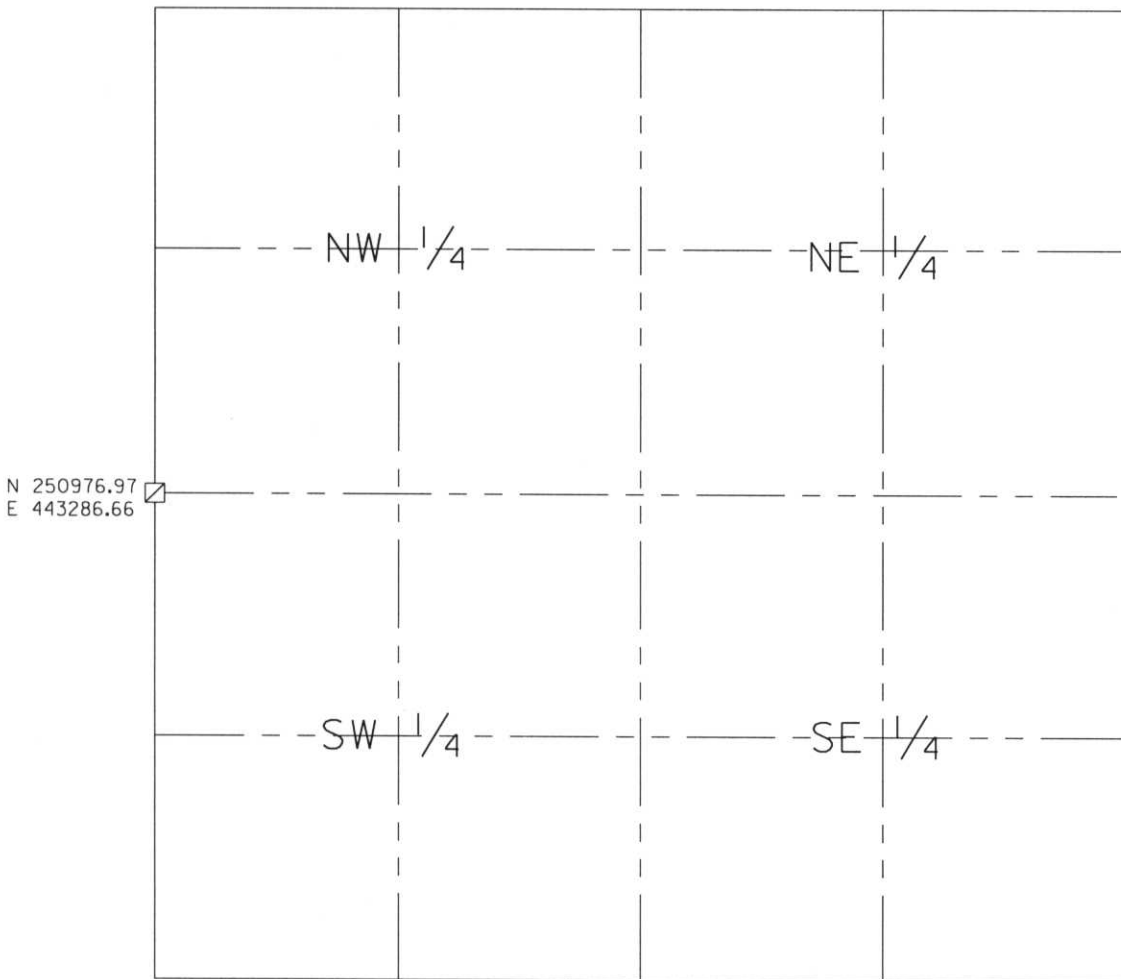


# LINCOLN COUNTY SECTION SUMMARY

LEGEND

- FOUND GRANITE MONUMENT
-  FOUND LINCOLN COUNTY MONUMENT
-  SET LINCOLN COUNTY MONUMENT
- △ COORDINATES PER ONEIDA COUNTY

SECTION SUMMARY    10 SECTION    35N TOWNSHIP    8E RANGE  
HARRISON TOWN



RECEIVED AT LINCOLN COUNTY  
 COURTHOUSE THIS 29th DAY  
 OF December 20 03  
*Joyce A. Rasmussen*  
 LAND INFORMATION OFFICE

NOTES:  
 COORDINATES AND BEARINGS ARE REFERENCED TO THE LINCOLN COUNTY COORDINATE SYSTEM AS DEVELOPED BY THE WISCONSIN DEPARTMENT OF TRANSPORTATION AND WERE DETERMINED BY GPS OBSERVATIONS ON CONTROL POINTS AS SUPPLIED BY THE DOT.



CERTIFIED CORRECT:

*Jeffrey L. Demuth*  
 Signature

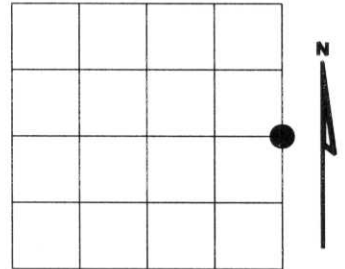
12/22/03  
 Date

Index No. E, I - 13, 17

# U.S. PUBLIC LAND SURVEY MONUMENT RECORD

NOTE: This form is intended and designed to fulfill all requirements of Wisconsin Administrative Code, Chapter A-E 7.08 U.S. Public Land Survey Monument Record (S)(a)(b)(c)(d)(e)(f)(g)(h)(i). An additional sheet may be added if necessary to conform with said requirements.

(a) Corner location: Township 35 North  
 Range 08 East  
 Town of HARRISON  
 LINCOLN County, Wisconsin



Section 9

(b)(f)(g)(h) Description of monument found at this corner and if it was accepted, state all evidence (material, testimonial, occupational, plats, records, other monuments) used as a basis for accepting. If not accepted or if nothing was found, state evidence used as basis for establishing location. If reestablished through lost corner proportionate methods, indicate all monuments, distances and directions used to establish. Indicate type of monument found or set and sign post.

1865 - Original corner set by Jos. L. Nowlin

1937- Francis Fuchs set 1/4 stone,  
 Spruce 10" N27°E 102.1 Lks.  
 Oak 3" S19°W 30.3 Lks.

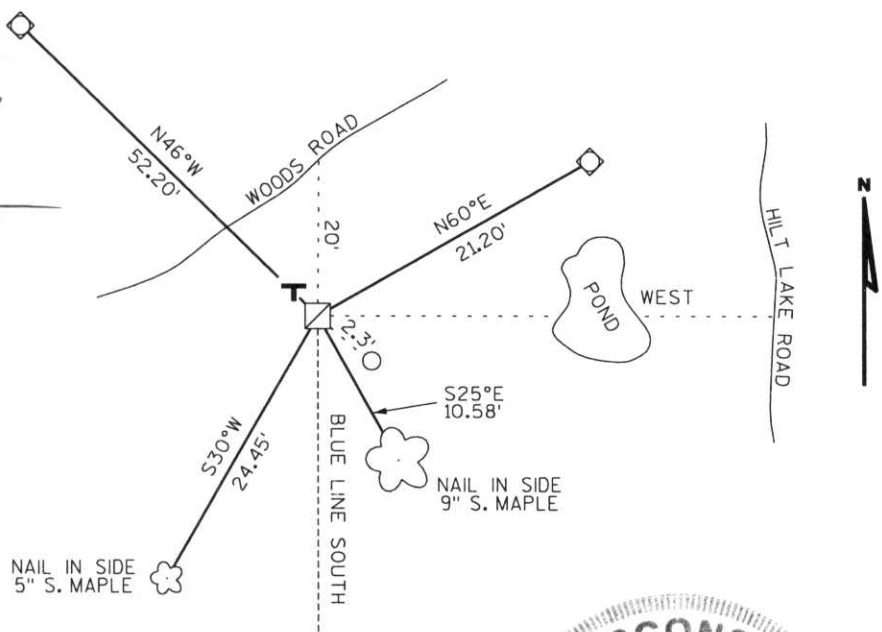
2003- I found 6" x 6" granite stone up 7", 8" dia. wood post  
 S50°E 2.3', blue painted line South.

Witnessed corner as shown below.

(c)(d)(e) Plan view of corner with ties to at least 4 witness monuments. If in disagreement with previously established corner, show the distances between the two corners and also indicate the ties to the

RECEIVED AT LINCOLN COUNTY  
 COURTHOUSE THIS 11<sup>TH</sup> DAY  
 OF June 20 03  
*Tony Dalk*  
 LAND INFORMATION OFFICE

- FOUND 6"x6" GRANITE MONUMENT
- SET 3/4" DIA. ROD WITH ALUMINUM CAP
- SET PLASTIC "T" SIGN POST N45°W 1'



(i) I, Dennis Roberts, Registered Land Surveyor #S-1863, hereby certify that the corner location on this record was determined by me or under my direction and control and that this U.S. Public Land Survey Monument Record is correct and complete to the best of my knowledge and belief.



Index No. \*\*\*\*\*  
 6-13

*Dennis B. Roberts*  
 Signature

5/29/03  
 Date



MARKER

D7