

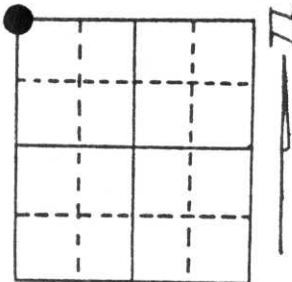
U.S. PUBLIC LAND SURVEY MONUMENT RECORD

Note: This form is intended and designed to fulfill all requirements of Wisconsin Administrative Code, Chapter A-E 5.02, U.S. Public Land Survey Monument Record (3) (a) (b) (c) (d) (e) (f) (g) (h) (i). An additional sheet may be added if necessary to conform with said requirements.

(a) Corner location: Township 35 North
 Range 8 East

Town/City/Village Harrison

County Lincoln



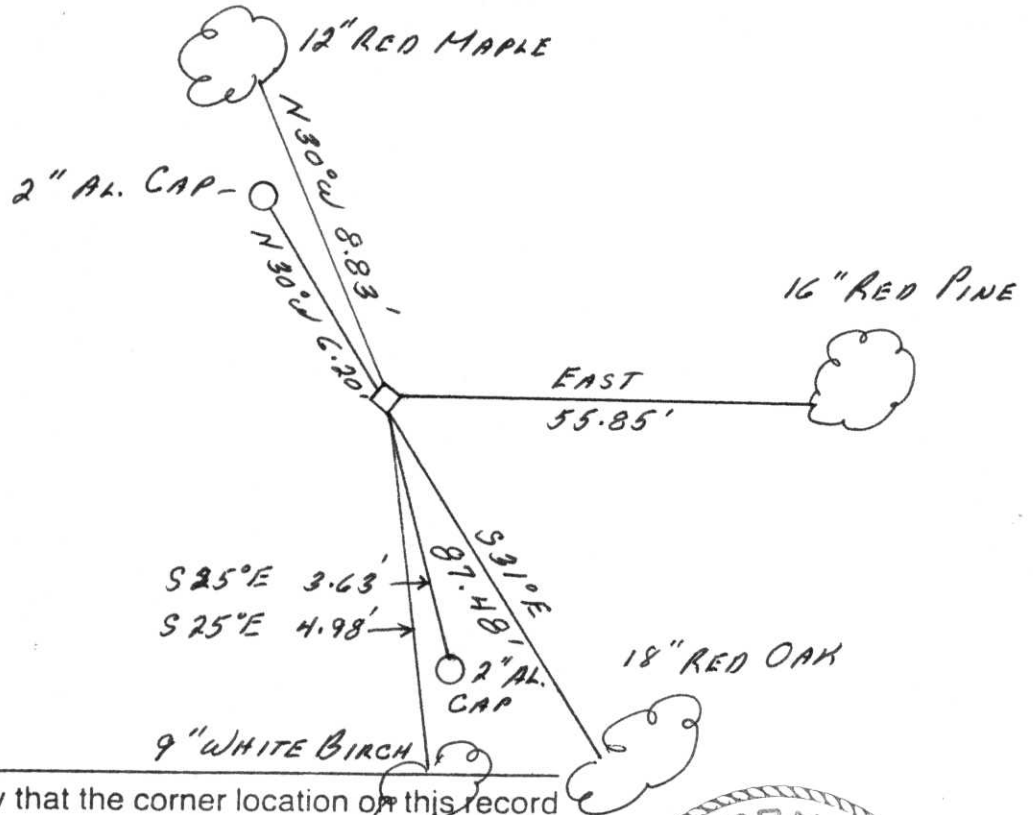
Section 15

(b) (f) (g) (h) Description of monument found at this corner and if it was accepted, state all evidence (material, testimonial, occupational, plats, records, other monuments) used as a basis for accepting. If not accepted or if nothing was found, state evidence used as basis for establishing location. If reestablished through lost corner proportionate methods, indicate all monuments, distances and directions used to establish.

We found this corner marked with a 6" x 6" x 30" granite stone monument placed in 1937 by Francis X. Fuchs. It is supported to be in the proper location by two of the bearing trees Fuchs placed, a 2 1/2" White Birch, S25°E, 8.1 links (5.35') and a 2 1/2" Maple, N30°W, 13 links (8.58'). Fuchs perpetuated this corner from the remains of the original bearing trees by James Nowlin in 1864. We took two new BTs and set two witness markers.

**RECEIVED AT LINCOLN COUNTY
 COURTHOUSE THIS 29th DAY
 OF Oct. 1996
Pat Priebe
 TAX DESCRIPTION OFFICE**

(c) (d) (e) Plan view of corner with ties to at least 4 witness monuments. If in disagreement with previously established corner, show the distances between the two corners and also indicate the ties to the disputed corner.



(i) I, Milo E. Stefan

(type or print name) certify that the corner location on this record was determined by me or under my direction and control and that this U.S. Public Land Survey Monument Record is correct and complete to the best of my knowledge and belief.

Milo E. Stefan
 Signature

October 26, 1996
 Date



Index No. 313 I-13



12 12:30 PM

12 12:31 PM



WATSON
N. THORNTON

12 12:31 PM





12 12 30 PM