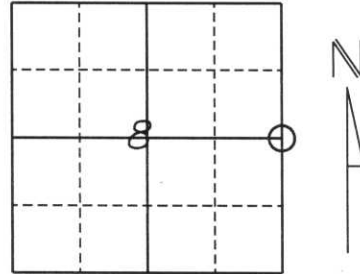


U.S. PUBLIC LAND SURVEY MONUMENT RECORD

Note: This form is intended and designed to fulfill all requirements of Wisconsin Administrative Code, Chapter A-E 5.02, U.S. Public Land Survey Monument Record (3) (a) (b) (c) (d) (e) (f) (g) (h) (i). An additional sheet may be added if necessary to conform with said requirements.

(a) Corner location: Township 35 North
 Range 8 East
 Town/City/Village HARRISON
 County LINCOLN



Section 8

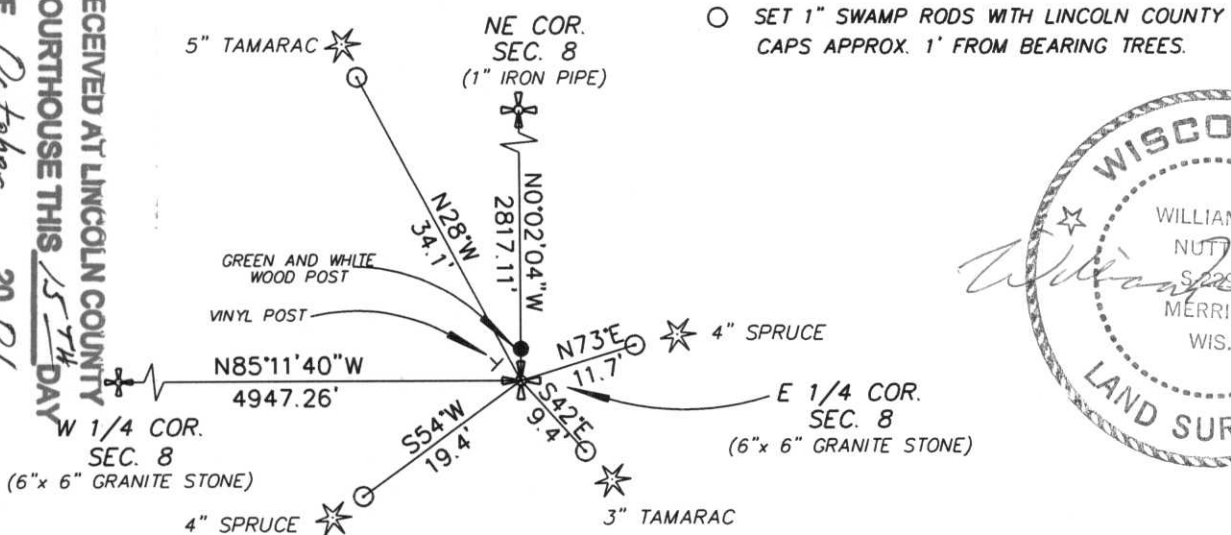
(b) (f) (g) (h) Description of monument found at this corner and if it was accepted, state all evidence (material, testimonial, occupational, plats, records, other monuments) used as a basis for accepting. If not accepted or if nothing was found, state evidence used as a basis for establishing location. If reestablished through lost corner proportionate methods, indicate all monuments, distances and directions used to establish.

The original corner was established by J. L. Nowlin in April of 1865.
 Original bearing trees: 5" Tamarac, S25°E, 13 lks.
 6" Tamarac, N35°W, 15 lks.

Found a 6" x 6" grey granite stone set by Francis X. Fuchs (Fox) in 1937.
Also found a green and white wood post to the north. Set (4) 1" swamp rods rods with Lincoln County caps approx. 1 foot from bearing trees. All bearing trees had older blazes or hack marks in them.

(c) (d) (e) Plan view of corner with ties to at least 4 witness monuments. If in disagreement with previously established corner, show the distances between the two corners and also indicate the ties to the disputed corner.

RECEIVED AT LINCOLN COUNTY
 COURTHOUSE THIS 15TH DAY
 OF October 20 01
 Tommy D. Miller
 LAND INFORMATION OFFICE



(i) I, William W. Nutter RLS, S-2299
 (type or print name) certify that the corner location on this record was determined by me or under my direction and control and that this U.S. Public Land Survey Monument Record is correct and complete to the best of my knowledge and belief.

William W. Nutter

10-15-01

Signature

Date



13 4:31 PM



13 4:32 PM



13 4:33 PM