



LINCOLN COUNTY SECTION SUMMARY

LEGEND

- FOUND GRANITE MONUMENT
-  FOUND LINCOLN COUNTY MONUMENT
-  SET LINCOLN COUNTY MONUMENT
- COORDINATES PER ONEIDA COUNTY

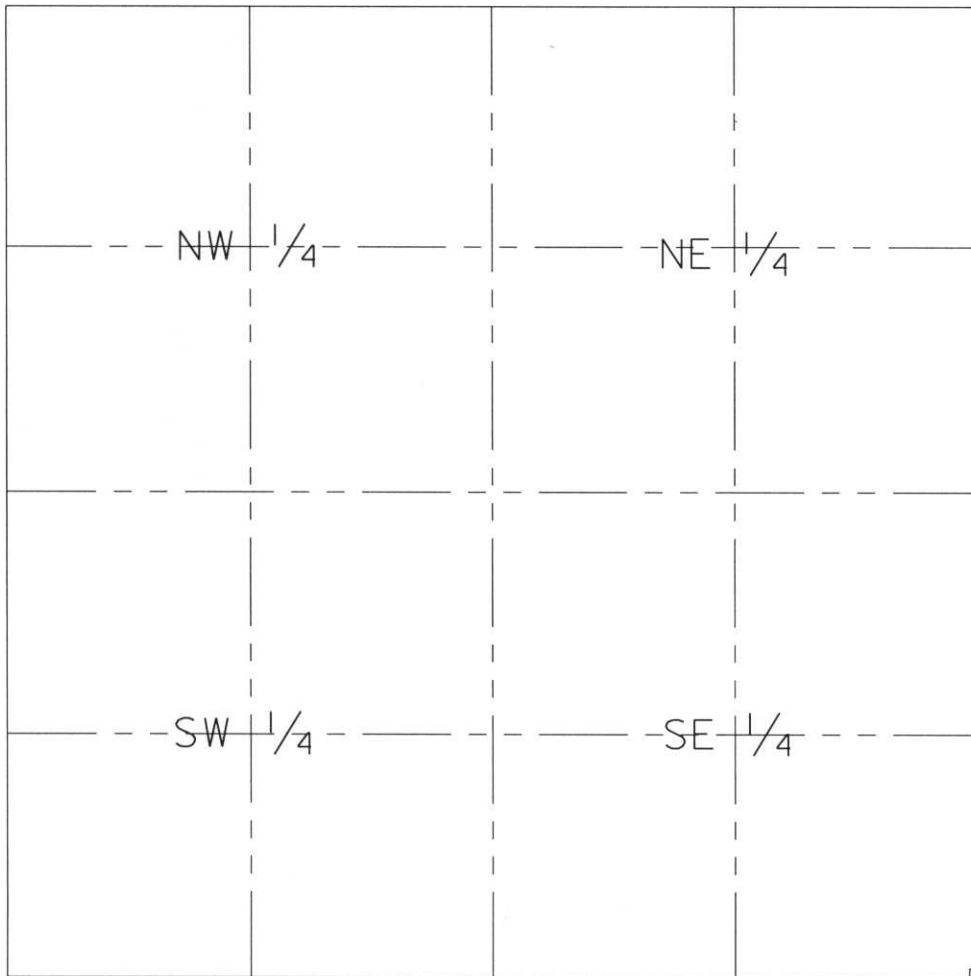
SECTION SUMMARY

08
SECTION

35N
TOWNSHIP

8E
RANGE

HARRISON
TOWN



N 247986.34
E 438092.85

RECEIVED AT LINCOLN COUNTY
 COURTHOUSE THIS 29th DAY
 OF December 20 03
Tracy A. Rasmussen
 LAND INFORMATION OFFICE

NOTES:
 COORDINATES AND BEARINGS ARE REFERENCED TO THE LINCOLN COUNTY COORDINATE SYSTEM AS DEVELOPED BY THE WISCONSIN DEPARTMENT OF TRANSPORTATION AND WERE DETERMINED BY GPS OBSERVATIONS ON CONTROL POINTS AS SUPPLIED BY THE DOT.



CERTIFIED CORRECT:

Jeffrey L. Demuth
 Signature

12/27/03
 Date

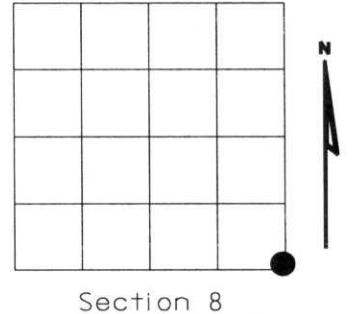
Index No. E.I.-52

I-9

U.S. PUBLIC LAND SURVEY MONUMENT RECORD

NOTE: This form is intended and designed to fulfill all requirements of Wisconsin Administrative Code, Chapter A-E 7.08 U.S. Public Land Survey Monument Record (3)(a)(b)(c)(d)(e)(f)(g)(h)(i). An additional sheet may be added if necessary to conform with said requirements.

(a) Corner location: Township 35 North
 Range 08 East
 Town of HARRISON
 LINCOLN County, Wisconsin



(b)(f)(g)(h) Description of monument found at this corner and if it was accepted, state all evidence (material, testimonial, occupational, plats, records, other monuments) used as a basis for accepting. If not accepted or if nothing was found, state evidence used as basis for establishing location. If reestablished through lost corner proportionate methods, indicate all monuments, distances and directions used to establish. Indicate type of monument found or set and sign post.

1865 - Original corner set by Jos. L. Nowlin

1937- Francis Fuchs- set 6"x6" granite stone braced with spruce stakes and sand.

- BTs: Spruce 4" N67°E 106.51 Lks.
- Spruce 4" N65°E 95.0 Lks.
- Spruce 3" S26°E 70.91 Lks.
- Spruce 3" S58°W 78.03 Lks.

2003- I found 6"x6" granite stone, in open marsh.
 Lincoln County witness monument 2" dia.
 iron pipe with a 3" dia. brass tablet stamped.

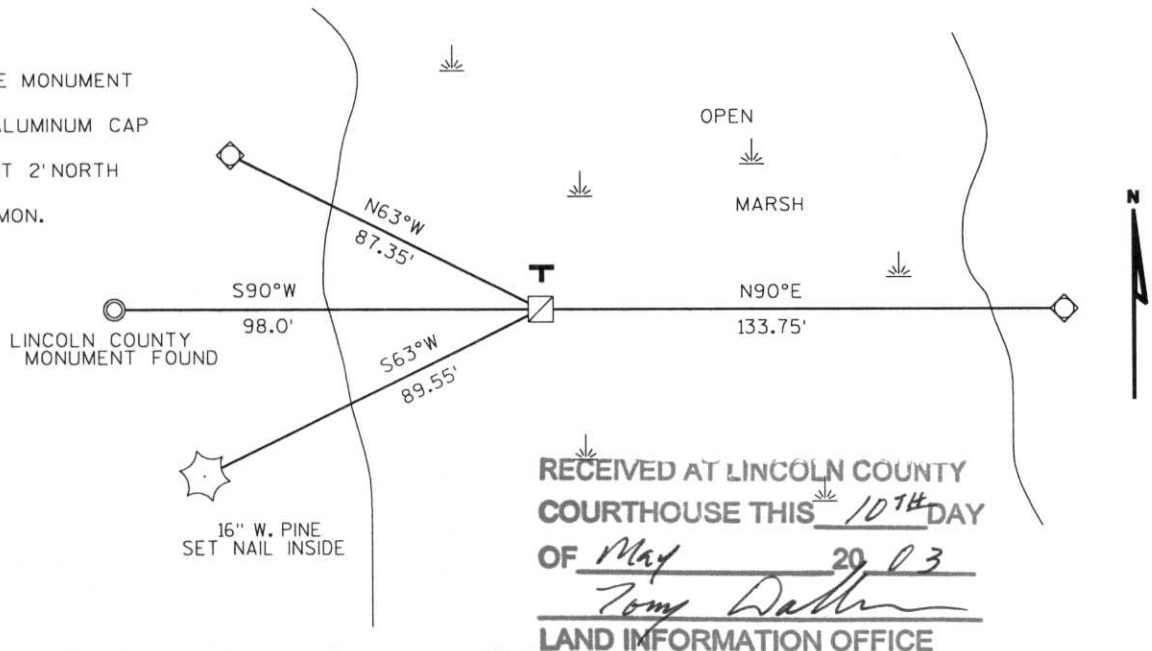
BT by others: 16" W. Pine S63°W 89.55'



Witnessed corner as shown below.

(c)(d)(e) Plan view of corner with ties to at least 4 witness monuments. If in disagreement with previously established corner, show the distances between the two corners and also indicate the ties to the disputed corner.

- ☐ FOUND 6"x6" GRANITE MONUMENT
- ◇ SET 3/4 ROD WITH ALUMINUM CAP
- T PLASTIC "T" SIGN SET 2' NORTH
- FOUND LINCOLN CO. MON.



RECEIVED AT LINCOLN COUNTY
 COURTHOUSE THIS 10TH DAY
 OF May 20 03
Tommy Dahlen
 LAND INFORMATION OFFICE

(i) I, Dennis Roberts, Registered Land Surveyor #S-1863, hereby certify that the corner location on this record was determined by me or under my direction and control and that this U.S. Public Land Survey Monument Record is correct and complete to the best of my knowledge and belief.

Dennis B. Roberts
 Signature 5/02/03
 Date

Index No. 7-9



5