

U.S. PUBLIC LAND SURVEY MONUMENT RECORD

NOTE: THIS FORM IS INTENDED AND DESIGNED TO FULFILL ALL REQUIREMENTS OF WISCONSIN ADMINISTRATIVE CODE, CHAPTER A-E 7.08, U.S. PUBLIC LAND SURVEY MONUMENT RECORD (3)(a)(b)(c)(d)(e)(f)(g)(h)(i). ADDITIONAL SHEETS MAY BE NECESSARY TO CONFORM TO SAID REQUIREMENTS.

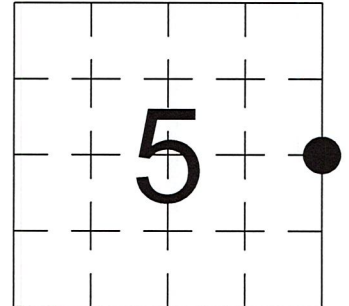
T 35 N, R 8 E

(a) CORNER LOCATION:

EAST 1/4 CORNER, SECTION 5
 TOWNSHIP 35 NORTH
 RANGE 8 EAST
 TOWN OF HARRISON
 LINCOLN COUNTY
 WISCONSIN

(b) HISTORY OF ORIGINAL CORNER:

ORIGINAL SURVEYOR: See Previous Tie Sheet
 COMMENCING DATE:
 COMPLETION DATE:
 ORIGINAL BEARING TREES:



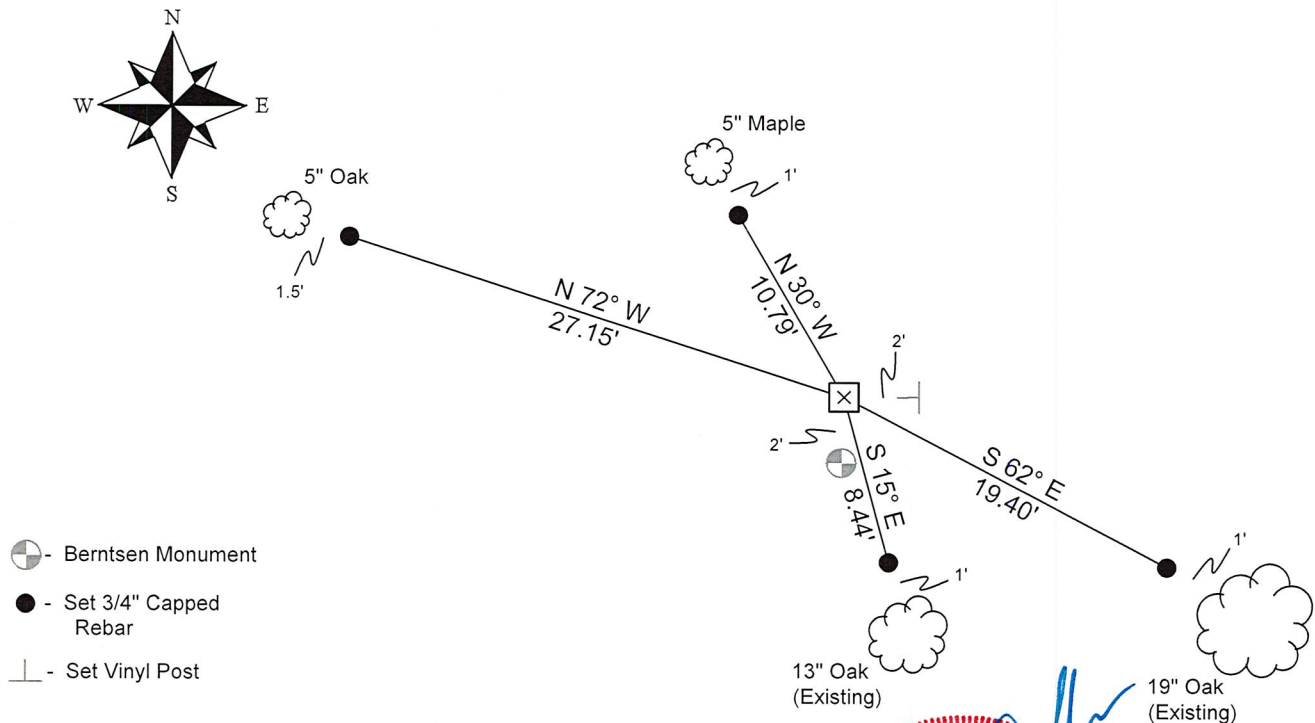
(f)(g)(h) DESCRIPTION OF MONUMENT FOUND AT THIS CORNER AND IF IT WAS ACCEPTED. STATE ALL EVIDENCE (MATERIAL, TESTIMONIAL, OCCUPATIONAL, PLATS, RECORDS, OTHER MONUMENTS) USED AS A BASIS FOR ESTABLISHING LOCATION. IF RE-ESTABLISHING THROUGH LOST CORNER PROPORTIONATE METHODS, INDICATE ALL MONUMENTS, DISTANCES, AND DIRECTIONS USED TO ESTABLISH. INDICATE TYPE OF MONUMENTS FOUND OR SET.

11/25/1974, William F. Kelly found and accepted 6" X 6" Granite Monument.

9/27/2023, I, Anthony R. Dallman, PLS-2405, found a 6" X 6" Granite Monument, up 14". I accepted this location and set witness monuments, as shown in the sketch below, to further perpetuate the corner location.

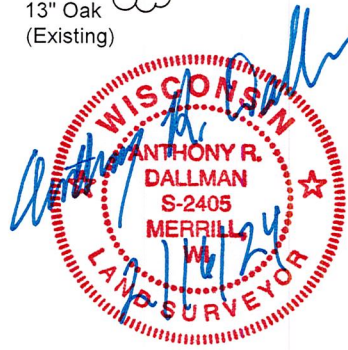
(c)(d)(e) PLAN VIEW OF THE CORNER WITH TIES TO AT LEAST FOUR WITNESSES. IF IN DISAGREEMENT WITH PREVIOUSLY ESTABLISHED CORNER, SHOW THE DISTANCES BETWEEN THE TWO CORNERS AND ALSO THE TIES TO THE DISPUTED CORNER.

- Tie bearings by hand-held compass.
- Tie distances by steel tape.
- Not to scale.



I, ANTHONY R. DALLMAN, WISCONSIN PROFESSIONAL LAND SURVEYOR, S-2405, HEREBY CERTIFY THAT THE CORNER LOCATION ON THIS RECORD WAS REFERENCED BY ME OR UNDER MY DIRECTION AND CONTROL AND THAT THIS U.S. PUBLIC LAND SURVEY MONUMENT RECORD IS COMPLETE TO THE BEST OF MY KNOWLEDGE AND BELIEF.

Anthony R. Dallman 02/16/24
 ANTHONY R. DALLMAN, PLS S-2405



INDEX NO. C-09

43508052000_Mon-N



43508052000_North



43508052000_West



PLEASE
DO NOT
DISTURB
NEARBY

S
U
R
V
E
Y
O
R

IF THE LOCATION
OF THIS MARKER
IS ENDANGERED
PLEASE CONTACT
COUNTY
SURVEYORS

43508052000_South



43508052000_East

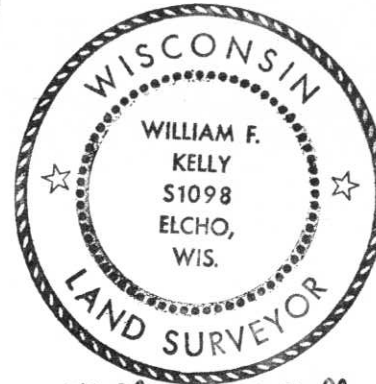


CERTIFIED LAND CORNER RESTORATION

Index No. C-9

State of Wisconsin }
County of LINCOLN } ss.

History of original corner establishment:



William F. Kelly

I WILLIAM F. KELLY, do hereby certify that on the 25th day of NOVEMBER, 1974, I found evidence of the 1/4 SECTION corner of SECTION 5 & 4 Township 35, North, Range 8 East, Fourth, Principal Meridian, as described hereon; and that from this evidence I established a new monument and accessories as described hereon to perpetuate the original location of this corner.

Description of corner evidence found:

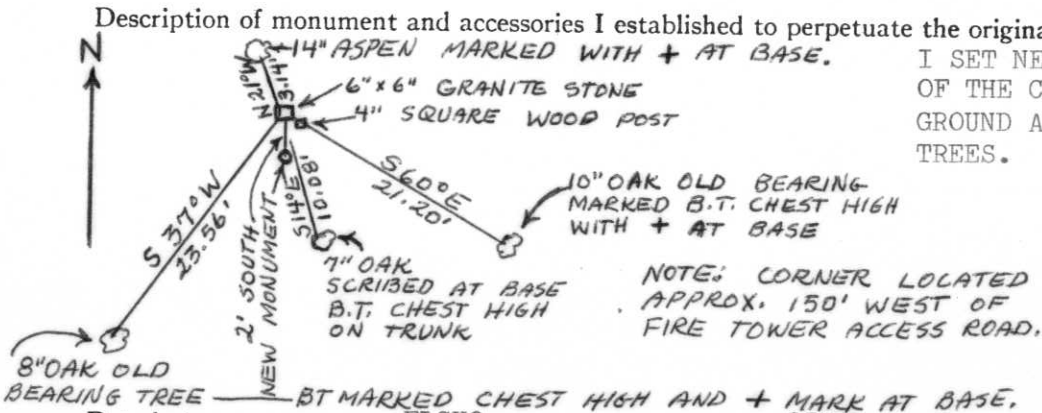
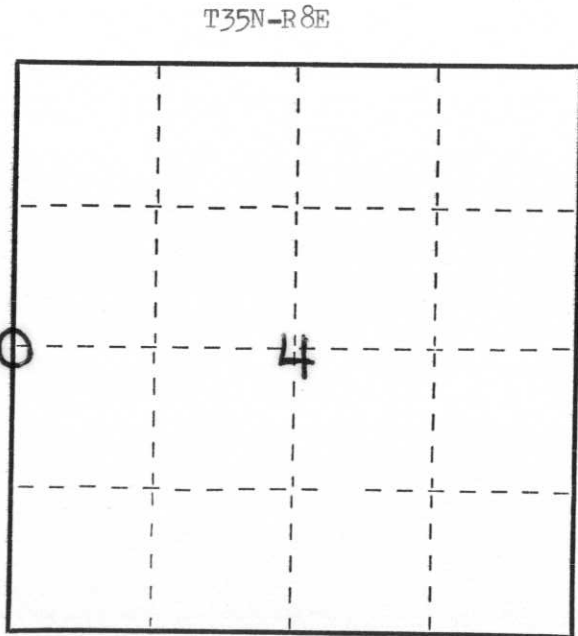
LOCATED 6"X 6" GRANITE MONUMENT MARKED 5+4 WITH STONES AROUND MONUMENT AND A 4" SQUARE WITNESS POST IN STONE PILE. ALSO FOUND TREES WITH OLD BLAZE MARKS.

Resident witnesses:

.....
.....
.....

Description of monument and accessories I established to perpetuate the original location of this corner.

I SET NEW MONUMENT 2 FT SOUTH OF THE CORNER FLUSH WITH THE GROUND AND REMARKED BEARING TREES.



Dated at ELCHO, Wis., this 25th day of NOVEMBER, 1974.

Signature William F. Kelly Title REGISTERED LAND SURVEYOR Registration No. S 1098
(County Surveyor, Registered Land Surveyor, or other duly authorized official)

Office of Register of Deeds, County of _____, I hereby certify that the within instrument was filed in this office for record on the _____ day of _____, 19____ at _____ o'clock _____ M.

(Register of Deeds)

By _____ Deputy

○ = Corner monument restored.



12 3:13 PM

12 3:13 PM

57





12 3:12 PM



12 3:12 PM



12 3:14PM

WARNING
NO TRESPASSING
CRIMINAL TRESPASS

12 3:15 PM