

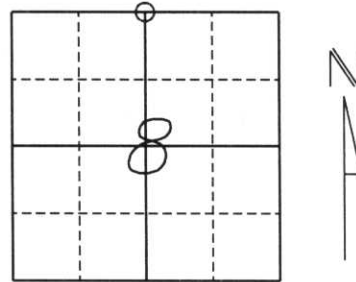
U.S. PUBLIC LAND SURVEY MONUMENT RECORD

Note: This form is intended and designed to fulfill all requirements of Wisconsin Administrative Code, Chapter A-E 5.02, U.S. Public Land Survey Monument Record (3) (a) (b) (c) (d) (e) (f) (g) (h) (l). An additional sheet may be added if necessary to conform with said requirements.

(a) Corner location: Township 35 North
 Range 8 East

Town/City/Village HARRISON

County Lincoln



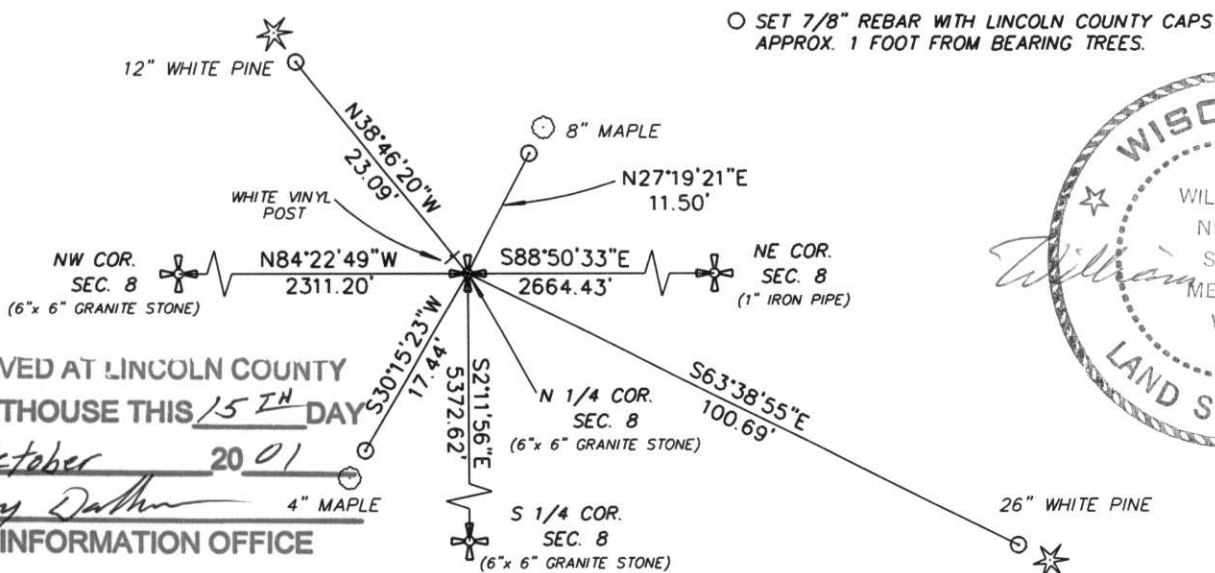
Section 8

(b) (f) (g) (h) Description of monument found at this corner and if it was accepted, state all evidence (material, testimonial, occupational, plats, records, other monuments) used as a basis for accepting. If not accepted or if nothing was found, state evidence used as a basis for establishing location. If reestablished through lost corner proportionate methods, indicate all monuments, distances and directions used to establish.

THE ORIGINAL CORNER WAS ESTABLISHED BY J. L. NOWLIN IN APRIL 1865. ORIGINAL BEARING TREES:
 15" YELLOW PINE, N15°W, 12 lks.
 16" YELLOW PINE, S35°E, 6 lks.

FOUND A 6" x 6" RED GRANITE STONE, SET BY FRANCIS X. FUCHS (FOX) IN 1937, ALONG A BLAZE LINE TO THE EAST AND WEST. SET (4) 7/8" REBAR WITH LINCOLN COUNTY CAPS AS WITNESS MONUMENTS APPROX. 1 FOOT FROM BEARING TREES.

(c) (d) (e) Plan view of corner with ties to at least 4 witness monuments. If in disagreement with previously established corner, show the distances between the two corners and also indicate the ties to the disputed corner.



RECEIVED AT LINCOLN COUNTY COURTHOUSE THIS 15TH DAY OF October 2001
 Jomy Dabner
 LAND INFORMATION OFFICE

(l) I, William W. Nutter RLS, S-2299
 (type or print name) certify that the corner location on this record was determined by me or under my direction and control and that this U.S. Public Land Survey Monument Record is correct and complete to the best of my knowledge and belief.

William W. Nutter 10-15-01
 Signature Date

Index No. E-7

U.S. PUBLIC LAND SURVEY MONUMENT RECORD

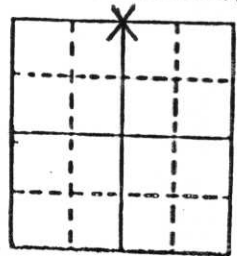
Note: This form is intended and designed to fulfill all requirements of Wisconsin Administrative Code, Chapter A-E 5.02, U.S. Public Land Survey Monument Record (3) (a) (b) (c) (d) (e) (f) (g) (h) (i). An additional sheet may be added if necessary to conform with said requirements.

(a) Corner location: Township 35 North

Range 8 East

Town Harrison

County Lincoln



Section 8

b) (f) (g) (h) Description of monument found at this corner and if it was accepted, state all evidence (material, testimonial, occupational, plats, records, other monuments) used as a basis for accepting. If not accepted or if nothing was found, state evidence used as basis for establishing location. If reestablished through lost corner proportionate methods, indicate all monuments, distances and directions used to establish.

August 1864, James Nowlin at 40.00 chains set 1/4 section corner post:

- 15" Yellow Pine, N15°W, 12 links (7.92')
- 16" Yellow Pine, S35°E, 6 links (3.96')

1937, Francis X. Fuchs found original BT stump N20°W, 12 links and set granite monument with:

- 7" White Pine, S25°W, 155.5 links (102.63')
- 5" Aspen, N42°W, 5.0 links (3.30')

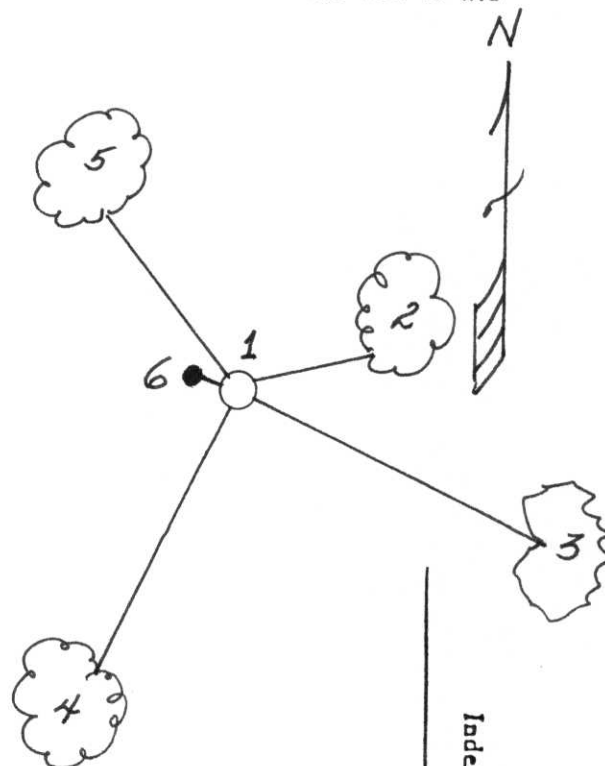
March 3, 1988 Milo E. Stefan found 6" x 6" x 30" red granite monument as set by Fuchs and 18" White Pine, S25°W, 102.63':

Steel fence post northwest .9'.

c) (d) (e) Plan view of corner with ties to at least 4 witness monuments. If in disagreement with previously established corner, show the distances between the two corners and also indicate the ties to the disputed corner.

1. 6" x 6" x 10" high, red granite monument as set by Francis X Fuchs in 1937.
2. Red Oak, N83°E, 13.83' (1/4S BT).
3. 24" White Pine, S69°E, 103.24' (1/4S BT).
4. 18" White Pine, S25°W, 102.63' (1/4S).
5. 6" White Pine, N38°W, 25.02' (1/4S BT).
6. Steel fence post, northwest, .9'.

(BTs scribed accordingly)
Distances to nail in side of trees.



(i) I, Milo E. Stefan

(type or print name) certify that the corner location on this record was determined by me or under my direction and control and that this U.S. Public Land Survey Monument Record is correct and complete to the best of my knowledge and belief.

Milo E. Stefan
Signature

3/14/88

Date



Index No. E-7



11 3:48 PM



11-300 PM



11 3:43 PM

11 3:50 PM

