

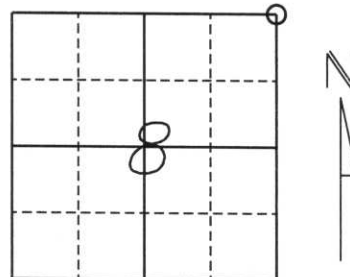
# U.S. PUBLIC LAND SURVEY MONUMENT RECORD

Note: This form is intended and designed to fulfill all requirements of Wisconsin Administrative Code, Chapter A-E 5.02, U.S. Public Land Survey Monument Record (3) (a) (b) (c) (d) (e) (f) (g) (h) (i). An additional sheet may be added if necessary to conform with said requirements.

(a) Corner location: Township 35 North  
 Range 8 East

Town/City/Village HARRISON

County Lincoln



Section 8

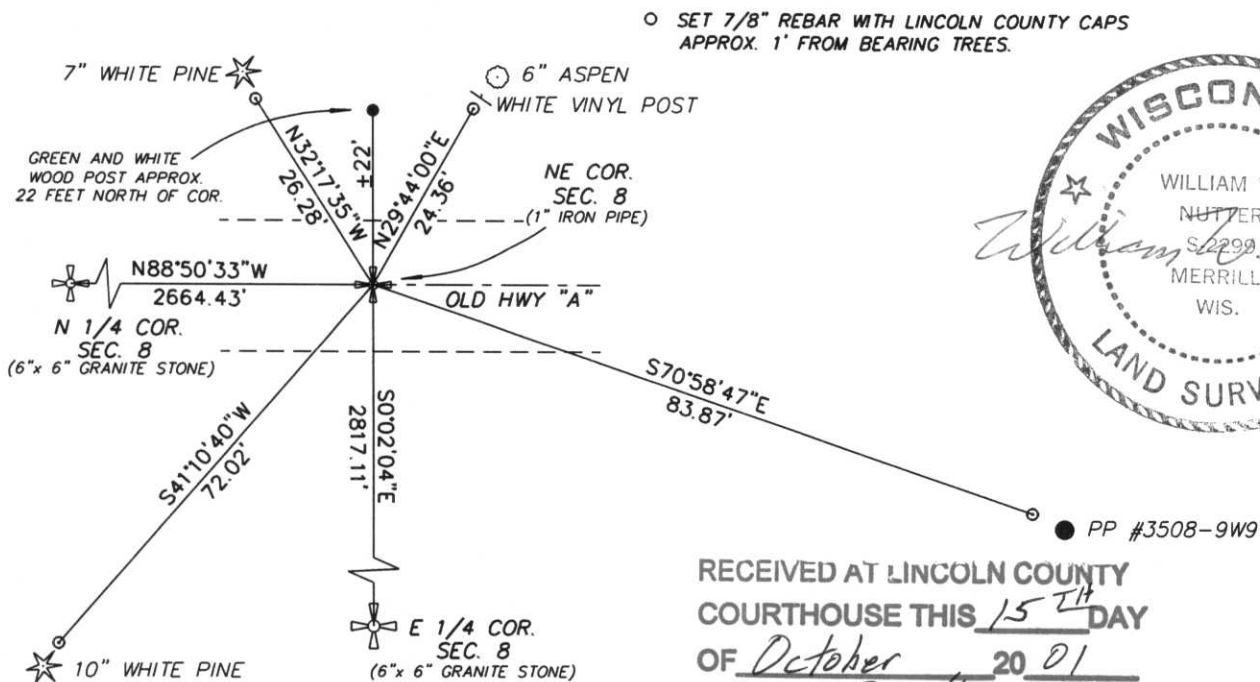
(b) (f) (g) (h) Description of monument found at this corner and if it was accepted, state all evidence (material, testimonial, occupational, plats, records, other monuments) used as a basis for accepting. If not accepted or if nothing was found, state evidence used as a basis for establishing location. If reestablished through lost corner proportionate methods, indicate all monuments, distances and directions used to establish.

*The original corner was established by J. L. Nowlin in April, 1865.*

- Original bearing trees:
- 6" Birch, S10°E, 30 lks.
  - 15" White Pine, S57°W, 37 lks.
  - 8" White Pine, N40°E, 60 lks.
  - 8" Aspen, N20°W, 50 lks.

*Found a 1" iron pipe set over a 6"x 6" granite stone set by Francis X. Fuchs (Fox) in 1937, along along the centerline of Old HWY "A" with a green and white wooden post to the north of Old HWY "A". Set (4) rebar with Lincoln County caps as witness monuments approx. 1 foot from bearing trees.*

(c) (d) (e) Plan view of corner with ties to at least 4 witness monuments. If in disagreement with previously established corner, show the distances between the two corners and also indicate the ties to the disputed corner.



RECEIVED AT LINCOLN COUNTY  
 COURTHOUSE THIS 15<sup>TH</sup> DAY  
 OF October 20 01  
*Tony Dabner*  
 LAND INFORMATION OFFICE

(i) I, William W. Nutter RLS, S-2299  
 (type or print name) certify that the corner location on this record was determined by me or under my direction and control and that this U.S. Public Land Survey Monument Record is correct and complete to the best of my knowledge and belief.

William W. Nutter 10-15-01  
 Signature Date

Index No. E-9