

# U.S. PUBLIC LAND SURVEY MONUMENT RECORD

NOTE: THIS FORM IS INTENDED AND DESIGNED TO FULFILL ALL REQUIREMENTS OF WISCONSIN ADMINISTRATIVE CODE, CHAPTER A-E 7.08, U.S. PUBLIC LAND SURVEY MONUMENT RECORD (3)(a)(b)(c)(d)(e)(f)(g)(h)(i). ADDITIONAL SHEETS MAY BE NECESSARY TO CONFORM TO SAID REQUIREMENTS.

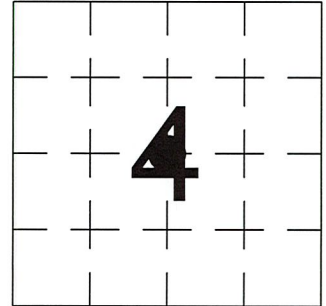
T 35 N, R 8 E

**(a) CORNER LOCATION:**

CENTER 1/4 CORNER, SECTION 4  
 TOWNSHIP 35 NORTH  
 RANGE 8 EAST  
 TOWN OF HARRISON  
 LINCOLN COUNTY  
 WISCONSIN

**(b) HISTORY OF ORIGINAL CORNER:**

ORIGINAL SURVEYOR: See Previous Tie Sheet  
 COMMENCING DATE:  
 COMPLETION DATE:  
 ORIGINAL BEARING TREES:



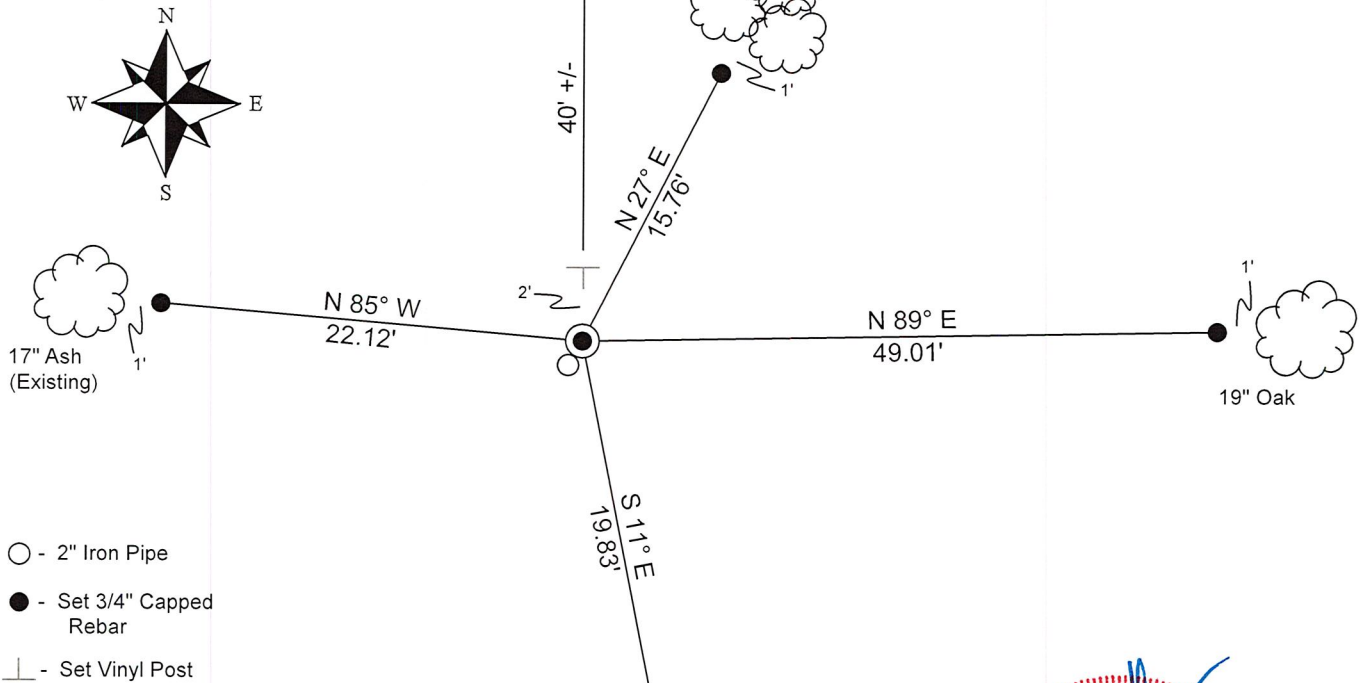
**(f)(g)(h) DESCRIPTION OF MONUMENT FOUND AT THIS CORNER AND IF IT WAS ACCEPTED. STATE ALL EVIDENCE (MATERIAL, TESTIMONIAL, OCCUPATIONAL, PLATS, RECORDS, OTHER MONUMENTS) USED AS A BASIS FOR ESTABLISHING LOCATION. IF RE-ESTABLISHING THROUGH LOST CORNER PROPORTIONATE METHODS, INDICATE ALL MONUMENTS, DISTANCES, AND DIRECTIONS USED TO ESTABLISH. INDICATE TYPE OF MONUMENTS FOUND OR SET.**

11/25/1974, William F. Kelly found and accepted 6" X 6" Granite Monument.

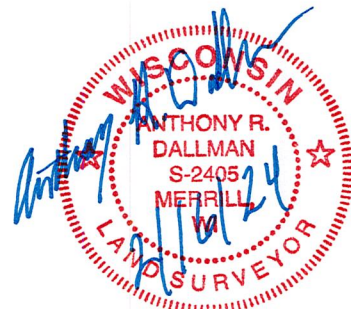
9/28/2023, I, Anthony R. Dallman, PLS-2405, found a 6" X 6" Granite Monument, up 14". I accepted this location and set witness monuments, as shown in the sketch below, to further perpetuate the corner location.

**(c)(d)(e) PLAN VIEW OF THE CORNER WITH TIES TO AT LEAST FOUR WITNESSES. IF IN DISAGREEMENT WITH PREVIOUSLY ESTABLISHED CORNER, SHOW THE DISTANCES BETWEEN THE TWO CORNERS AND ALSO THE TIES TO THE DISPUTED CORNER.**

- Tie bearings by hand-held compass.
- Tie distances by steel tape.
- Not to scale.



I, ANTHONY R. DALLMAN, WISCONSIN PROFESSIONAL LAND SURVEYOR, S-2405, HEREBY CERTIFY THAT THE CORNER LOCATION ON THIS RECORD WAS REFERENCED BY ME OR UNDER MY DIRECTION AND CONTROL AND THAT THIS U.S. PUBLIC LAND SURVEY MONUMENT RECORD IS COMPLETE TO THE BEST OF MY KNOWLEDGE AND BELIEF.



*Anthony R. Dallman* 02/16/24  
 ANTHONY R. DALLMAN, PLS S-2405

INDEX NO. C-11

43508042020

43508042020\_Mon-N



43508042020\_North



43508042020\_West



43508042020\_South



PLEASE  
DO NOT  
DISTURB  
NEARBY  
SURVEYOR

SACO

43508042020\_East



CERTIFIED LAND CORNER RESTORATION

Index No. C-11

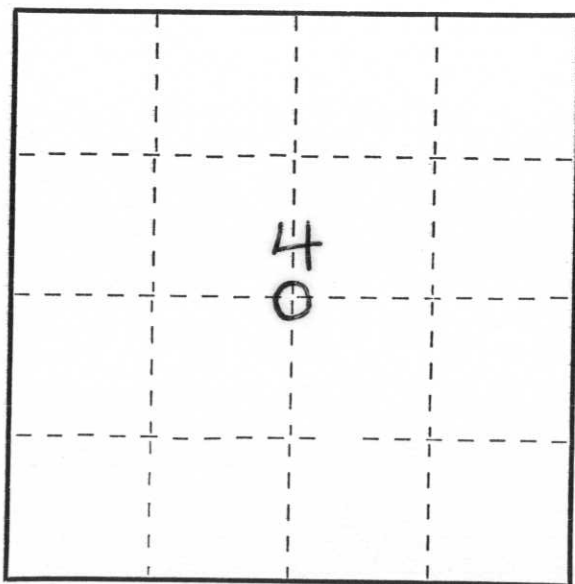
State of Wisconsin }  
County of LINCOLN } ss.

I WILLIAM F. KELLY, do hereby certify that on the 25<sup>th</sup> day of NOVEMBER, 1974, I found evidence of the CENTER SECTION corner of SECTION 4 Township 35, North, Range 8 East, Fourth, Principal Meridian, as described hereon; and that from this evidence I established a new monument and accessories as described hereon to perpetuate the original location of this corner.

Resident witnesses:

.....  
.....  
.....

T35N-R8E



○ = Corner monument restored.

History of original corner establishment:

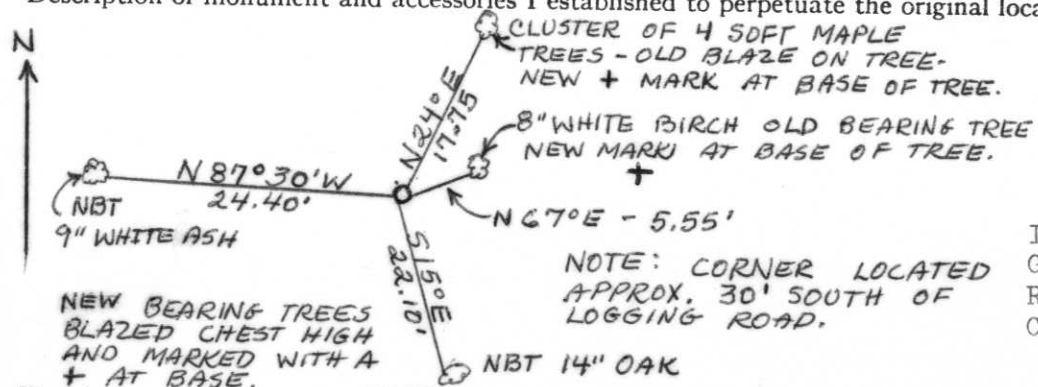
Description of corner evidence found:

LOCATED 2" PIPE IN PILE OF STONES WITH MARKED WITNESS TREES.



*William F. Kelly*

Description of monument and accessories I established to perpetuate the original location of this corner.



I SET NEW MONUMENT FLUSH WITH GROUND AS CORNER MARKER AND RESET 2" PIPE AS A WITNESS FOR CORNER.

Dated at ELCHO, Wis., this 25<sup>th</sup> day of NOVEMBER, 1974

Signature William F. Kelly Title REGISTERED LAND SURVEYOR Registration No. S 1098  
(County Surveyor, Registered Land Surveyor, or other duly authorized official)

Office of Register of Deeds, County of \_\_\_\_\_, I hereby certify that the within instrument was filed in this office for record on the \_\_\_\_\_ day of \_\_\_\_\_, 19\_\_\_\_ at \_\_\_\_\_ o'clock \_\_\_\_\_ M.

(Register of Deeds)

By \_\_\_\_\_ Deputy