

# U.S. PUBLIC LAND SURVEY MONUMENT RECORD

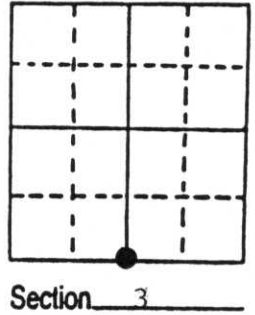
Note: This form is intended and designed to fulfill all requirements of Wisconsin Administrative Code, Chapter A-E 7.08 U.S. Public Land Survey Monument Record (3) (a) (b) (c) (d) (e) (f) (g) (h) (i). An additional sheet may be added if necessary to conform with said requirements.

(a) Corner location: Township 35 North

Range 8 East/West

Town/City/Village HARRISON

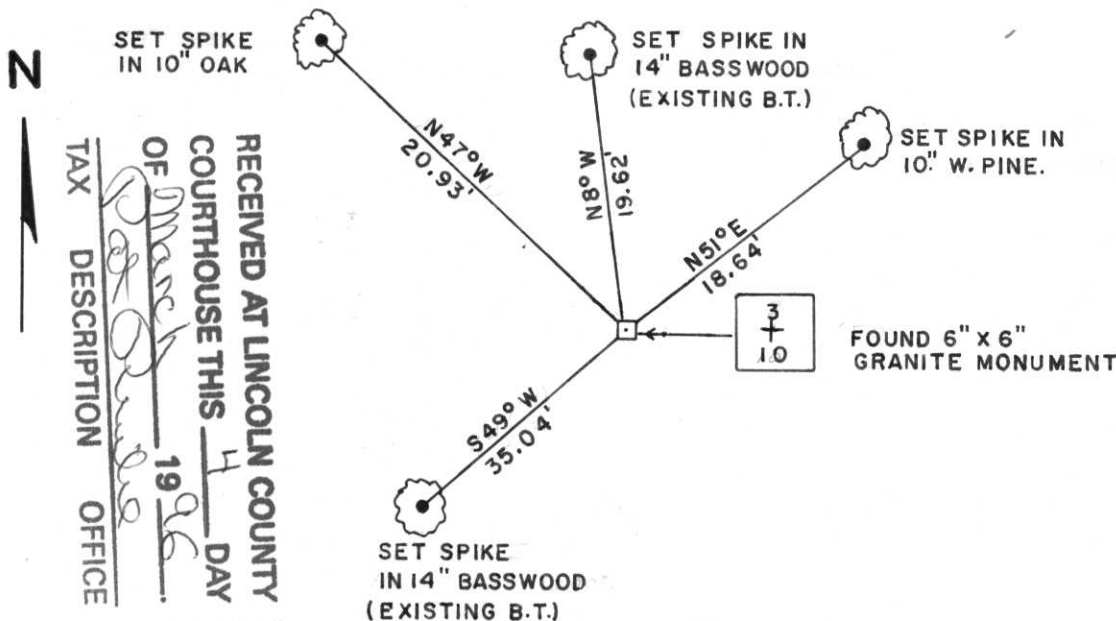
County LINCOLN



(b) (f) (g) (h) Description of monument found at this corner and if it was accepted, state all evidence (material, testimonial, occupational, plats, records, other monuments) used as a basis for accepting. If not accepted or if nothing was found, state evidence used as basis for establishing location. If reestablished through lost corner proportionate methods, indicate all monuments, distances and directions used to establish. Indicate type of monument found or set and sign post.

- 1865 - James Nowlin set post for  $\frac{1}{4}$  corner and made the following B.T.'s: Cedar 6" N45°E 6 links, Cedar 6" S10°E 5 links.
- -- - Fox set  $\frac{1}{4}$  stone and made B.T.'s W. Pine 22" N76°W 110.30' Elm 14" S26°W 195.45'
- 1984 - William E. Bando found granite monument.
- 1995 - William E. Bando found granite monument and witnessed as shown below.

(c) (d) (e) Plan view of corner with ties to at least 4 witness monuments. If in disagreement with previously established corner, show the distances between the two corners and also indicate the ties to the disputed corner.



RECEIVED AT LINCOLN COUNTY  
 COURTHOUSE THIS 4 DAY  
 OF March 1996  
 TAX DESCRIPTION OFFICE

(i) I, William E. Bando  
 (type or print name) certify that the corner location on this record was determined by me or under my direction and control and that this U.S. Public Land Survey Monument Record is correct and complete to the best of my knowledge and belief.

William E. Bando 2-28-96  
 Signature Date



Index No. E-15

Stamp

CERTIFIED LAND CORNER RESTORATION

Index No. E-15

State of Wisconsin }  
County of Oneida } ss.

History of original corner establishment:

Marble monument was in place on Sept. 15, 1964

I Norman Loftus, do hereby certify that on the 13th day of April, 1973, I found evidence of the N $\frac{1}{2}$  corner of 10 Township 35N, North, Range 8E, Fourth, Principal Meridian, as described hereon; and that from this evidence I established a new monument and accessories as described hereon to perpetuate the original location of this corner.

Description of corner evidence found:

Corner was set on the North shoulder of an eight foot wide woods road at a fence corner. Most of fence is now laying on the ground.

Resident witnesses:

Anna Bennett  
King G. Sheldon

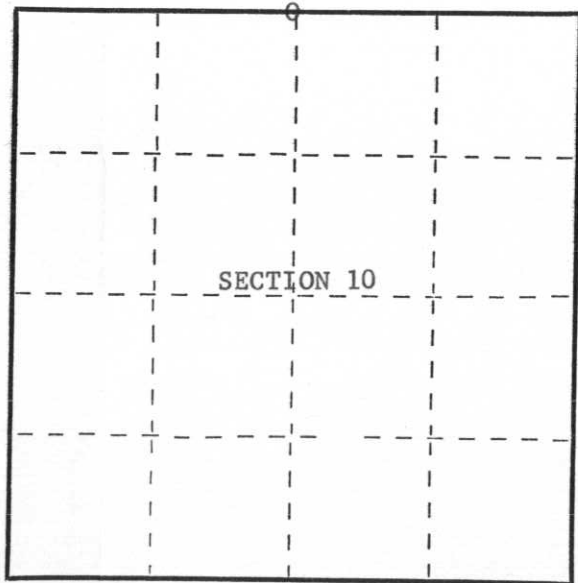
RECEIVED AT LINCOLN COUNTY  
COURTHOUSE THIS 27<sup>th</sup> DAY  
OF April 1973  
Steve Odegard  
TAX DESCRIPTION OFFICE

Description of monument and accessories I established to perpetuate the original location of this corner.

I relocated the hole from which the marble monument was moved. Hole was readily identified by the fill used, including rocks with blue paint. Also, our survey lines were retracable to the point where the marble had been removed.

- Marked witness trees as follows:  
Basswood 7" N8<sup>o</sup>W 19ft 3 in.  
" 8" S60<sup>o</sup>W 35.5 ft.  
White Pine 3" N46<sup>o</sup>E 18.5 ft.

Norman Loftus  
Reg. Wisc. Surveyor 259



○ = Corner monument restored.

Dated at Rhineclander, Wis., this 26<sup>th</sup> day of April, 1973.  
Signature Norman Loftus Title Surveyor Registration No. 259  
(County Surveyor, Registered Land Surveyor, or other duly authorized official)

Office of Register of Deeds, County of \_\_\_\_\_, I hereby certify that the within instrument was filed in this office for record on the \_\_\_\_\_ day of \_\_\_\_\_, 19\_\_\_\_ at \_\_\_\_\_ o'clock \_\_\_\_\_ M.

\_\_\_\_\_  
(Register of Deeds)  
By \_\_\_\_\_ Deputy

172.