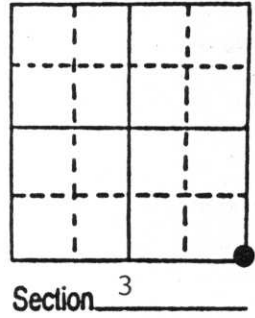


U.S. PUBLIC LAND SURVEY MONUMENT RECORD

Note: This form is intended and designed to fulfill all requirements of Wisconsin Administrative Code, Chapter A-E 7.08 U.S. Public Land Survey Monument Record (3) (a) (b) (c) (d) (e) (f) (g) (h) (i). An additional sheet may be added if necessary to conform with said requirements

(a) Corner location: Township 35 North
 Range 8 East ~~West~~

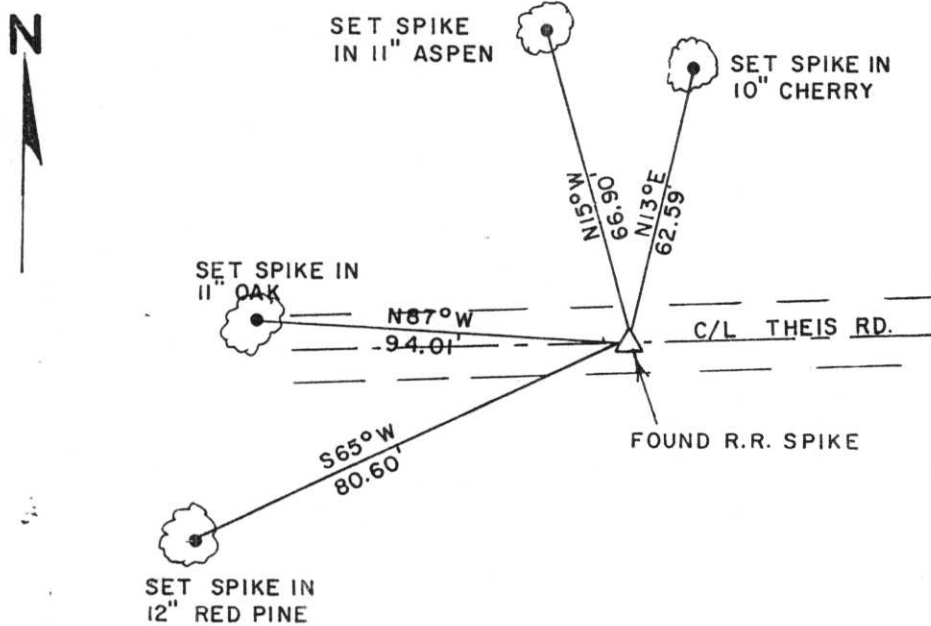
Town/City/Village HARRISON
 County LINCOLN



(b) (f) (g) (h) Description of monument found at this corner and if it was accepted, state all evidence (material, testimonial, occupational, plats, records, other monuments) used as a basis for accepting. If not accepted or if nothing was found, state evidence used as basis for establishing location. If reestablished through lost corner proportionate methods, indicate all monuments, distances and directions used to establish. Indicate type of monument found or set and sign post.

- 1865 - James Nowlin set $\frac{1}{4}$ post and made the following B.T.'s:
 sugar 14" N29° - 15 links, 12" birch N72°E 40 links.
- 1978 - William Immich set iron pipe.
- 1984 - William E. Badow set R.R. spike.
- 1995 - William E. Badow found R.R. spike and witnessed as shown below.

(c) (d) (e) Plan view of corner with ties to at least 4 witness monuments. If in disagreement with previously established corner, show the distances between the two corners and also indicate the ties to the disputed corner.



NOTE: BEARINGS TAKEN WITH A HANDHELD MAGNETIC COMPASS. DISTANCES MEASURED TO 60 PENNY NAILS SET IN SIDE OF TREES. NO SCALE.

RECEIVED AT LINCOLN COUNTY COURTHOUSE THIS 19 96
 TAX DESCRIPTION OFFICE

(i) I, William E. Badow
 (type or print name) certify that the corner location on this record was determined by me or under my direction and control and that this U.S. Public Land Survey Monument Record is correct and complete to the best of my knowledge and belief.

William E. Badow 2-28-96
 Signature Date



Stamp

Index No. E-17

CERTIFIED LAND CORNER RESTORATION

Index No. E-17

State of Wisconsin }
County of Lincoln } ss.

History of original corner establishment:

Corner set by J.L. Nowlin in 1865. West between 2 & 11 80.00 set corner to 2-3-10-11.

I William E. Badow, do hereby certify that on the 30 th day of November, 1984, I found evidence of the Southeast corner of Section 3 Township 35, North, Range 8 East, Fourth, Principal Meridian, as described hereon; and that from this evidence I established a new monument and accessories as described hereon to perpetuate the original location of this corner.

Description of corner evidence found:

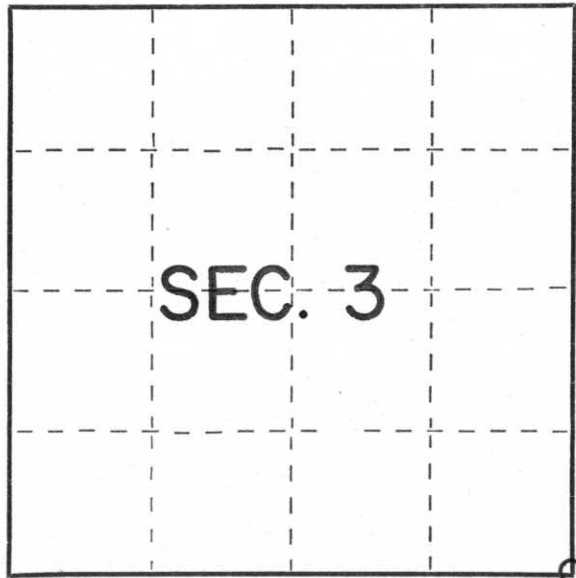
Corner was monumented by F. Fox in 1937 with a granite monument. Made the following BT's Linden 6" S85E 186.5 lks, Oak 6" N10W 192.1 lks. Monument was made inaccessible by construction of a filled driveway. I reset corner using the north line of Section 11 as shown on Genisot & Associates map #6890. Fenceline runs north.

Resident witnesses:

.....
.....
.....

Description of monument and accessories I established to perpetuate the original location of this corner.

I set a railroad spike down 3" & found the following BT: Oak 16" N12W 130.0'. Made the following BT's: Spike in the side of an Aspen 4" N30W 28.18', Spike in the side of a Cherry 7" N10E 62.24'. Granite monument bears N87W 2735.96', RR Spike bears N87E 2730.16'.



○ = Corner monument restored.

Dated at Rhineland, Wis., this 5th day of December, 1984

Signature William E. Badow Title Registered Land Surveyor Registration No. S-1182
(County Surveyor, Registered Land Surveyor, or other duly authorized official)

Office of Register of Deeds, County of _____, I hereby certify that the within instrument was filed in this office for record on the _____ day of _____, 19____ at _____ o'clock _____ M.

.....
(Register of Deeds)

By _____ Deputy