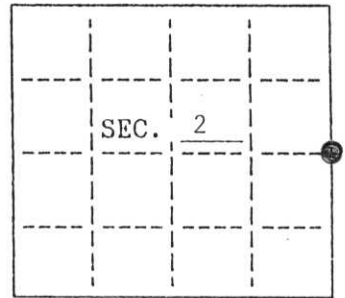


U. S. PUBLIC LAND SURVEY MONUMENT RECORD

Note: This form is intended and designed to fulfill all requirements of Wisconsin Administrative Code, Chapter A-B 7.08 U.S. Public Land Survey Monument Record (3)(a)(b)(c)(d)(e)(f)(g)(h)(i). An additional sheet may be added if necessary to conform with said requirements.

(a) CORNER LOCATION: State Plane Coordinates
 E 1/4 corner of Sec. 2 X _____
 Township 35 North Y _____
 Range 8 East Datum Base _____
 Town/City Harrison County of Lincoln



(b) HISTORY OF ORIGINAL CORNER ESTABLISHMENT
 Original Surveyor: J.L. Nowlin
 Date of Survey: Commenced 1865
 Completed 1865

Original B.T.'S
 12" Birch N 28° W, 5 lks.
 8" Sugar S 75° E 23 lks.

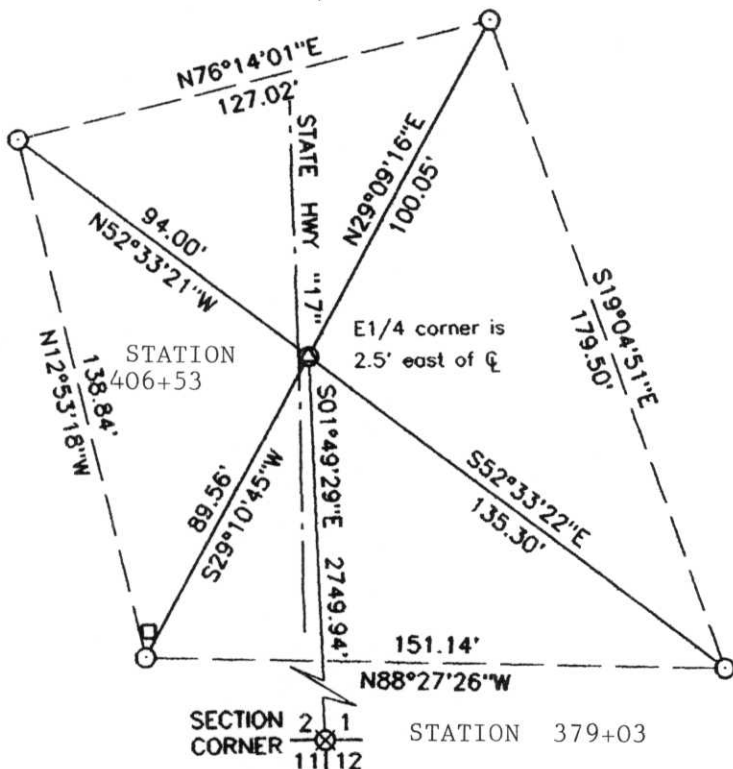
(b)(f)(g)(h) Description of monument found at this corner and if it was accepted, state all evidence (material, testimonial, occupational, plats, records, other monuments) used as a basis for accepting. If not accepted or if nothing was found, state evidence used as basis for establishing location. If reestablished through lost corner proportionate methods, indicate all monuments, distances and directions used to establish. Indicate type of monument and sign post found or set.

1939 STATE HIGHWAY '17' RIGHT-OF-WAY PLAT DIVISION JOB NUMBER 7083 SHOWS A CORNER RECOVERED +/- 1' EAST OF C/L. THERE IS ALSO A BEND IN THE SECTION LINE BETWEEN OPPOSING SECTION CORNERS. PLAT SHOWS BEARINGS AND DISTANCED ON C/L.

2002 WE DID NOT RECOVER CORNER FROM 1939. WE FOUND R/W POSTS WHICH ARE CONSISTENT WITH THE EXISTING CENTERLINE OF THE HIGHWAY, AS-BUILT. THE SECTION LINE MEASUREMENT COMPARES FAVORABLY WITH THE HIGHWAY STATIONING DISTANCE.

(5,251' MEASURED - 5,252' RECORD) WE RE-ESTABLISHED CORNER POSITION USING THE HIGHWAY STATIONING FROM THE SOUTHEAST SECTION CORNER AND THE EXISTING C/L & LOCATION OF THE R/W POSTS. SET RR SPIKE IN PAVEMENT WITH (4) LINCOLN COUNTY ALUMINUM CAPPED REFERENCE MONUMENTS OVER REBAR AS SHOWN BELOW.

(c)(d)(e) Plan view of corner with ties to at least 4 witness monuments. If in disagreement with previously established corner, show the distances between the two corners and also indicate the ties to the disputed.



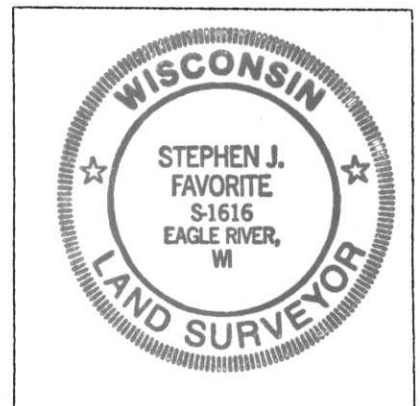
RECEIVED AT LINCOLN COUNTY
 COURTHOUSE THIS 21ST DAY
 OF August 20 02
Tony Deller
 LAND INFORMATION OFFICE

Scale 1" = 50'

- ⊙ Set railroad spike in pavement
- ⊗ Set 7/8" X 30" aluminum capped rebar
- ⊠ Set carsonite post

(i) I, STEPHEN J. FAVORITE, REG. LAND SURVEYOR #S-1616, hereby certify that the corner location on this record was determined by me or under my direction and control and that this U.S. Public Land Survey Monument Record is correct and complete to the best of my knowledge and belief.

Stephen J. Favorite
 Signature _____ Date 7/19/02



INDEX NO. C-21