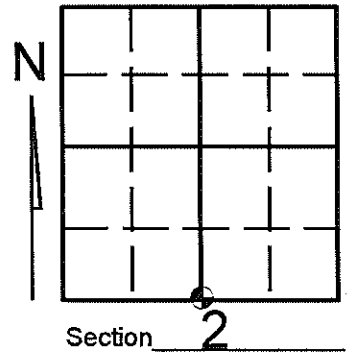


# U.S. PUBLIC LAND SURVEY MONUMENT RECORD

Note: This form is intended and designed to fulfill all requirements of Wisconsin Administrative Code, Chapter A-E 7.08 U.S. Public Land Survey Monument Record (3)(a)(b)(c)(d)(e)(f)(g)(h)(i). An additional sheet may be added if necessary to conform with said requirements.

(a) Corner location: Township 35 North  
 Range 08 East/West

Town/City/Village HARRISON  
 County LINCOLN



(b) (f) (g) (h) Description of monument found at this corner and if it was accepted, state all evidence (material, testimonial, occupational, plats, records, other monuments) used as a basis for accepting. If not accepted or if nothing was found, state evidence used as basis for establishing location. If reestablished through lost corner proportionate methods, indicate all monuments, distances and directions used to establish. Indicate type of monument found or set and sign post.

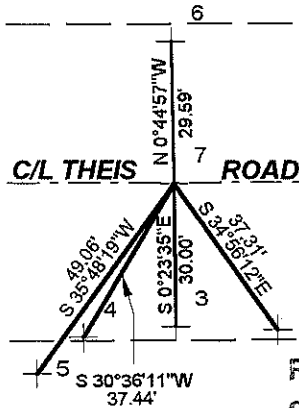
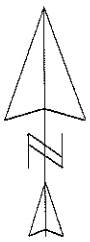
**SEE CORNER FORM E-19 FOR HISTORY OF CORNER.**

**- AUGUST 2002 - Stephen Favorite found 1" iron pipe (See Lincoln County Plat Of Survey S179A.)**

**- DECEMBER 2009 - Kevin Bixby set P.K. nail from existing witnesses per corner form E-19 and witnessed as shown below.**

(c) (d) (e) Plan view of corner with ties to at least 4 witness monuments. If in disagreement with previously established corner, show the distances between the two corners and also indicate the ties to the disputed corner.

BEARINGS MEASURED WITH TOTAL STATION.  
 DISTANCES MEASURED TO HEAD OF SPIKE.



**LEGEND**

- 6- EXISTING 1" IRON PIPE
- 7- SET P.K. NAIL
- 1-, -5- SET 1" CAPPED L.C.W.M.
- 4- EXISTING SPIKE IN 7" DEAD MAPLE
- 3- EXISTING 1 1/4" CAPPED LINCOLN COUNTY WITNESS PIPE

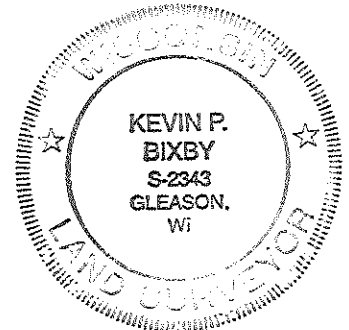
SCALE: 1" = 40'

RECEIVED BY LINCOLN COUNTY  
 SURVEYOR THIS 9<sup>TH</sup> DAY  
 OF April 2010  
Kevin Bixby  
 COUNTY SURVEYOR

(i) I, KEVIN P. BIXBY

(type or print name) certify that the corner location on this record was determined by me or under my direction and control and that this U.S. Public Land Survey Monument Record is correct and complete to the best of my knowledge and belief.

Kevin Bixby  
 Signature Date 4/08/10



Stamp

Index No.

CERTIFIED LAND CORNER RESTORATION

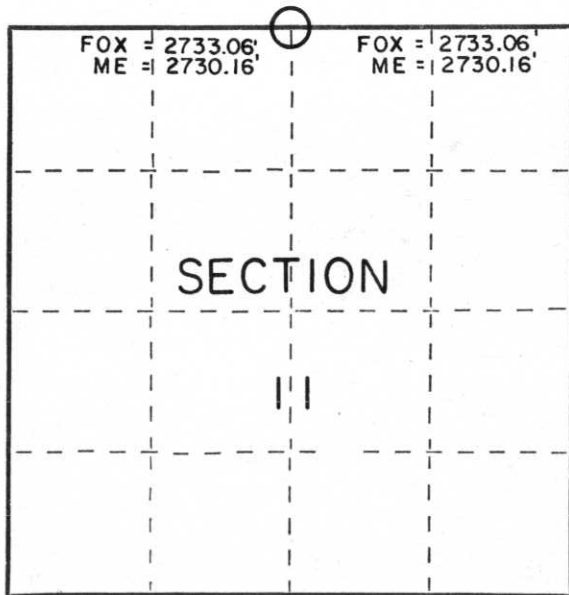
Index No. E-19

State of Wisconsin }  
County of LINCOLN } ss.

I William Immich do hereby certify that on the 6th day of APRIL, 1985, I found evidence of the NORTH 1/4 corner of SECTION 11 Township 35, North, Range 8 EAST, Fourth, Principal Meridian, as described hereon; and that from this evidence I established a new monument and accessories as described hereon to perpetuate the original location of this corner.

Resident witnesses:

.....  
.....  
.....



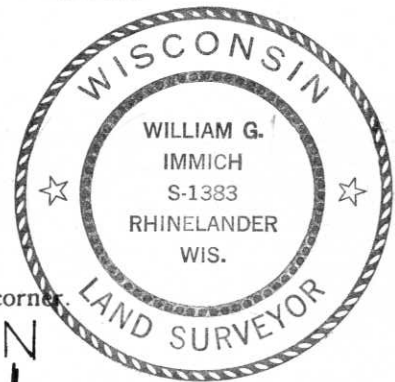
○ = Corner monument restored.

History of original corner establishment:

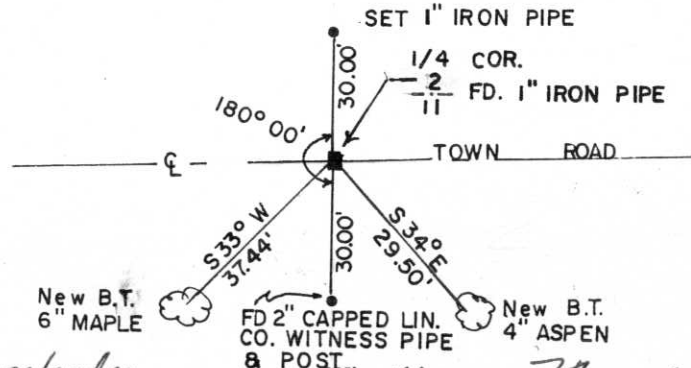
1865 NOWLIN GOVT SURVEYOR & WEST ON TRUE LINE  
40.00 SET 1/4 POST ~~SUGAR~~ SUGAR S N 4 W 31k  
BIRCH 10 S 33 W 21 k  
F. FOX SET 1/4 STONE BET 2+11 BY POR PORTIONAL  
MEASUREMENT AT 41.41 CHAINS 12" BELOW TOP OF TOWN RD  
HEMLOCK 8 N 70 W 79.2 k ASPEN 3 1/2 N 57 E 70.8 k  
OFFSET STAKE NORTH 20 kS SOUTH DITCH 14' NORTH DITCH 5'

Description of corner evidence found:

I FOUND 1" IRON PIPE IN CENTER OF ROAD & A LINCOLN CO. WITNESS PIPE 30.00' SOUTH. ROAD CONSTRUCTION DESTROYED FOX'S MON. & WITNESSES.



Description of monument and accessories I established to perpetuate the original location of this corner:



N  
- MAGNETIC BEARINGS WITH HAND COMPASS  
- DISTANCES TO NAIL IN TREE

Dated at Rhinelande, Wis., this 7th day of APRIL, 1985

Signature William Immich Title R.L.S. Registration No. 1383  
(County Surveyor, Registered Land Surveyor, or other duly authorized official)

Office of Register of Deeds, County of \_\_\_\_\_, I hereby certify that the within instrument was filed in this office for record on the \_\_\_\_\_ day of \_\_\_\_\_, 19\_\_\_\_ at \_\_\_\_\_ o'clock \_\_\_\_\_ M.

(Register of Deeds)

By \_\_\_\_\_ Deputy