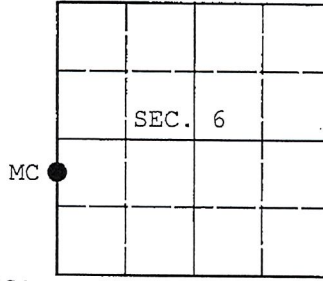


**U.S. PUBLIC LAND SURVEY MONUMENT RECORD**

Note: This form is intended and designed to fulfill all requirements of Wisconsin Administrative Code, Chapter A-E 7.08 U.S. Public Land Survey Monument Record (3) (a) (b) (c) (d) (e) (f) (g) (h) (i). An additional sheet may be added if necessary to conform with said requirements.

(a) CORNER LOCATION: WISCRS - Oneida County  
 Meander Cor. of Secs. 1 & 6 N: 131,437.76 USft  
 Township 35 North E: 259,727.82 USft  
 Range 8 & 9 East of the 4th P.M. Datum: NAD 1983(2011)  
 Town of Enterprise County of Oneida



(b) HISTORY OF ORIGINAL CORNER ESTABLISHMENT

Original Surveyor: \_\_\_\_\_ Original Accessories: \_\_\_\_\_  
 Date of Survey: Commenced: \_\_\_\_\_  
 Completed: \_\_\_\_\_

(b) (f) (g) (h) Description of monument found at this corner and if it was accepted, state all evidence (material, testimonial, occupational, plats, records, other monuments) used as a basis for accepting. If not accepted or if nothing was found, state evidence used as basis for establishing location. If re-established through lost corner proportionate methods, indicate all monuments, distances and directions used to establish. Indicate type of monument and sign post found or set.

NOTE: This is a perpetuation of a previous USPLS Monument Record by Dennis B. Roberts, RLS dated July 3, 2003 and filed in the office of the Oneida County Register of Deeds. A complete history of the corner can be found on the previous monument record. I accept the previous location as a true and faithful perpetuation or reestablishment of the original corner location and further perpetuate it as follows.

June 14, 2016: I found and accepted the record monument, a 1" diam. aluminum pipe with 2.5" diam. Lincoln Co. aluminum cap projecting 4" above the ground surface. The existing accessories were found in substantial agreement with the record and were not remeasured as the sole purpose of this work is to report the coordinates of the corner point.

The coordinate value shown has been verified by at least one of the following methods: 1) comparison to a previously GPS determined published value; 2) the value is the average of two or more GPS observations at a markedly different time; 3) one or more distances were measured back to the GPS observed corner from temporary GPS observed offset locations.

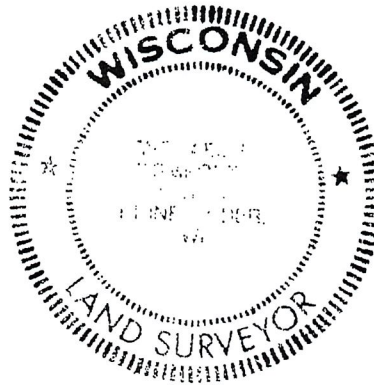
(c) (d) (e) Plan view of corner with ties to at least 4 witness monuments. If in disagreement with previously established corner, show the distances between the two corners and also indicate the ties to the disputed.

REGISTER OF DEEDS OFFICE  
 ONEIDA COUNTY  
 FILED

DEC 28 2016

AT \_\_\_\_\_ O'CLOCK \_\_\_\_\_ M  
 KYLE J. FRANSON  
 REGISTER OF DEEDS

RECEIVED BY LINCOLN COUNTY  
 SURVEYOR THIS 17<sup>th</sup> DAY  
 OF January 20 18  
*Tanya Dull*  
 COUNTY SURVEYOR



(i) I, Michael J. Romportl, Professional Land Surveyor No. S-1624, hereby certify that the corner location on this record was determined by me or under my direction and control and that this U.S. Public Land Survey Monument Record is correct and complete to the best of my knowledge and belief.

*Michael J. Romportl*  
 Signature \_\_\_\_\_ Date 12/23/2016

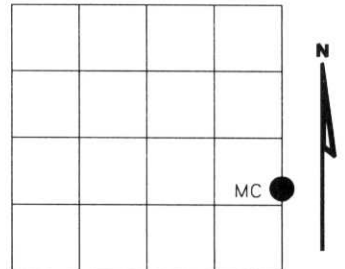
3508011400 (INDEX NO. C/D-1)

C/D-25

# U.S. PUBLIC LAND SURVEY MONUMENT RECORD

NOTE: This form is intended and designed to fulfill all requirements of Wisconsin Administrative Code, Chapter A-E 7.08 U.S. Public Land Survey Monument Record (S)(a)(b)(c)(d)(e)(f)(g)(h)(i). An additional sheet may be added if necessary to conform with said requirements.

(a) Corner location: Township 35 North  
 Range 08 East  
 Town of HARRISON  
 LINCOLN County, Wisconsin



Section 1

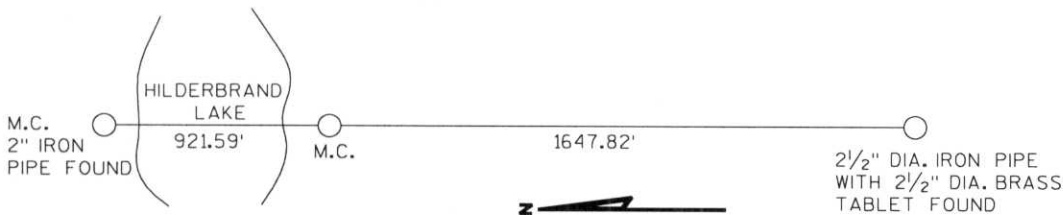
(b)(f)(g)(h) Description of monument found at this corner and if it was accepted, state all evidence (material, testimonial, occupational, plats, records, other monuments) used as a basis for accepting. If not accepted or if nothing was found, state evidence used as basis for establishing location. If reestablished through lost corner proportionate methods, indicate all monuments, distances and directions used to establish. Indicate type of monument found or set and sign post.

1859 - Original corner set by H.C. Fellows

----- Vaughn map #B3899 (Oneida County) shows M.C.

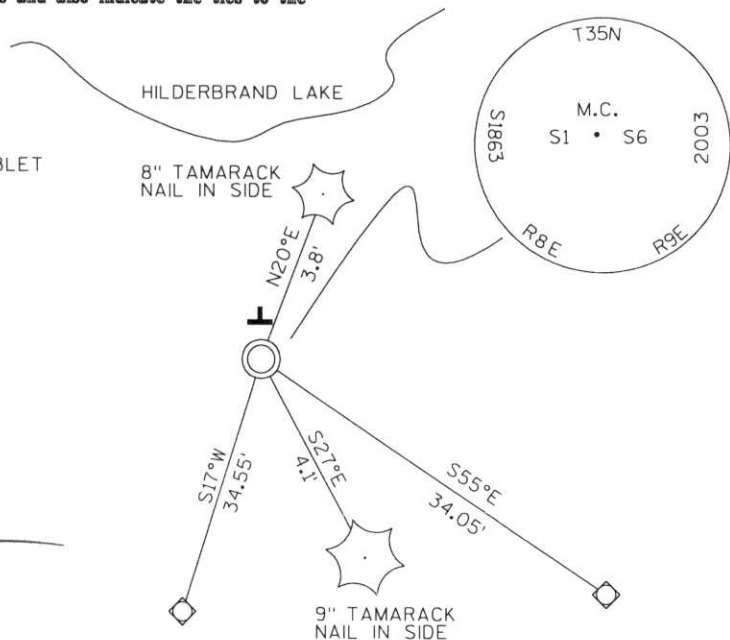
2003- I found no evidence of M.C. set 1" dia. 5' long Lincoln County aluminum tablet stamped to identify corner.

Witnessed as shown below.



(c)(d)(e) Plan view of corner with ties to at least 4 witness monuments. If in disagreement with previously established corner, show the distances between the two corners and also indicate the ties to the disputed corner.

- SET LINCOLN COUNTY MONUMENT 1" DIA. 5' LONG ALUM. PIPE WITH 2 1/2" DIA. ALUM. TABLET
- ◇ SET 3/4" ROD WITH ALUMINUM CAP
- T SET PLASTIC "T" SIGN POST 1' NORTH



RECEIVED AT LINCOLN COUNTY COURTHOUSE THIS 17<sup>TH</sup> DAY OF July 2003  
*Jerry Dahn*  
 LAND INFORMATION OFFICE

(i) I, Dennis Roberts, Registered Land Surveyor #S-1863, hereby certify that the corner location on this record was determined by me or under my direction and control and that this U.S. Public Land Survey Monument Record is correct and complete to the best of my knowledge and belief.

*Dennis B. Roberts*      7/03/03  
 Signature      Date



Index No. \*\*\*\*\*

C-0, 25

PLEASE DO NOT  
REMOVE  
**SURVEY**  
MARKERS

M.C.  
80131