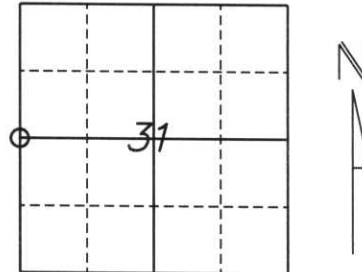


# U.S. PUBLIC LAND SURVEY MONUMENT RECORD

Note: This form is intended and designed to fulfill all requirements of Wisconsin Administrative Code, Chapter A-E 5.02, U.S. Public Land Survey Monument Record (3) (a) (b) (c) (d) (e) (f) (g) (h) (l). An additional sheet may be added if necessary to conform with said requirements.

(a) Corner location: Township 35 North  
 Range 8 East  
 Town/City/Village HARRISON  
 County Lincoln



Section 31

(b) (f) (g) (h) Description of monument found at this corner and if it was accepted, state all evidence (material, testimonial, occupational, plats, records, other monuments) used as a basis for accepting. If not accepted or if nothing was found, state evidence used as a basis for establishing location. If reestablished through lost corner proportionate methods, indicate all monuments, distances and directions used to establish.

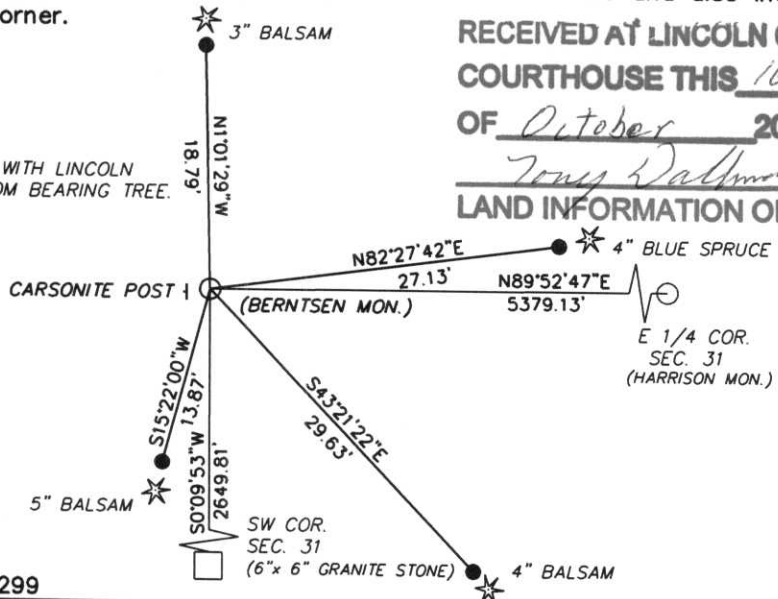
ORIGINAL SURVEY DONE BY HARVEY MULLEN IN AUG. OF 1860. SET  
 WOODEN CORNER POST WITH BEARING TREES:

10" WHITE PINE N88°E 16 LINKS  
 6" HEMLOCK N69°W 19 LINKS

FOUND FENCELINE RUNNING NORTH-SOUTH. SET BERNTSEN MONUMENT  
 ON FENCELINE AT INTERSECTION WITH FENCELINE TO THE EAST, WITH (4) 7/8" REBARS  
 AS WITNESS TIES TO THE MONUMENT.

(c) (d) (e) Plan view of corner with ties to at least 4 witness monuments. If in disagreement with previously established corner, show the distances between the two corners and also indicate the ties to the disputed corner.

\* ALL TIES ARE 7/8" REBARS WITH LINCOLN COUNTY CAPS SET 1 FOOT FROM BEARING TREE.



**RECEIVED AT LINCOLN COUNTY  
 COURTHOUSE THIS 16<sup>TH</sup> DAY  
 OF October 20 00**

*Tony Wallman*  
**LAND INFORMATION OFFICE**

E 1/4 COR.  
 SEC. 31  
 (HARRISON MON.)



(l) I, William W. Nutter RLS, S-2299  
 (type or print name) certify that the corner location on this record was determined by me or under my direction and control and that this U.S. Public Land Survey Monument Record is correct and complete to the best of my knowledge and belief.

*William W. Nutter*  
 Signature

10-16-00  
 Date

Index No. 63-1



19 3:32 PM

SMURVEY

19 3:32 PM



19 3:31 PM



19 3:31 PM