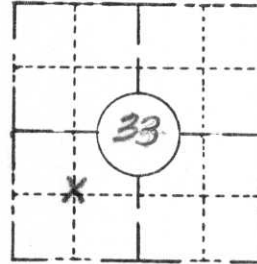


COUNTY <i>Lincoln</i>		
TOWN <i>King</i>		
HIGHWAY <i>C.T.H. "D"</i>		
SECTION <i>33</i>	TOWNSHIP <i>35 N</i>	RANGE <i>7E</i>
TYPE OF LANDMARK <i>1/16 Corner</i>		

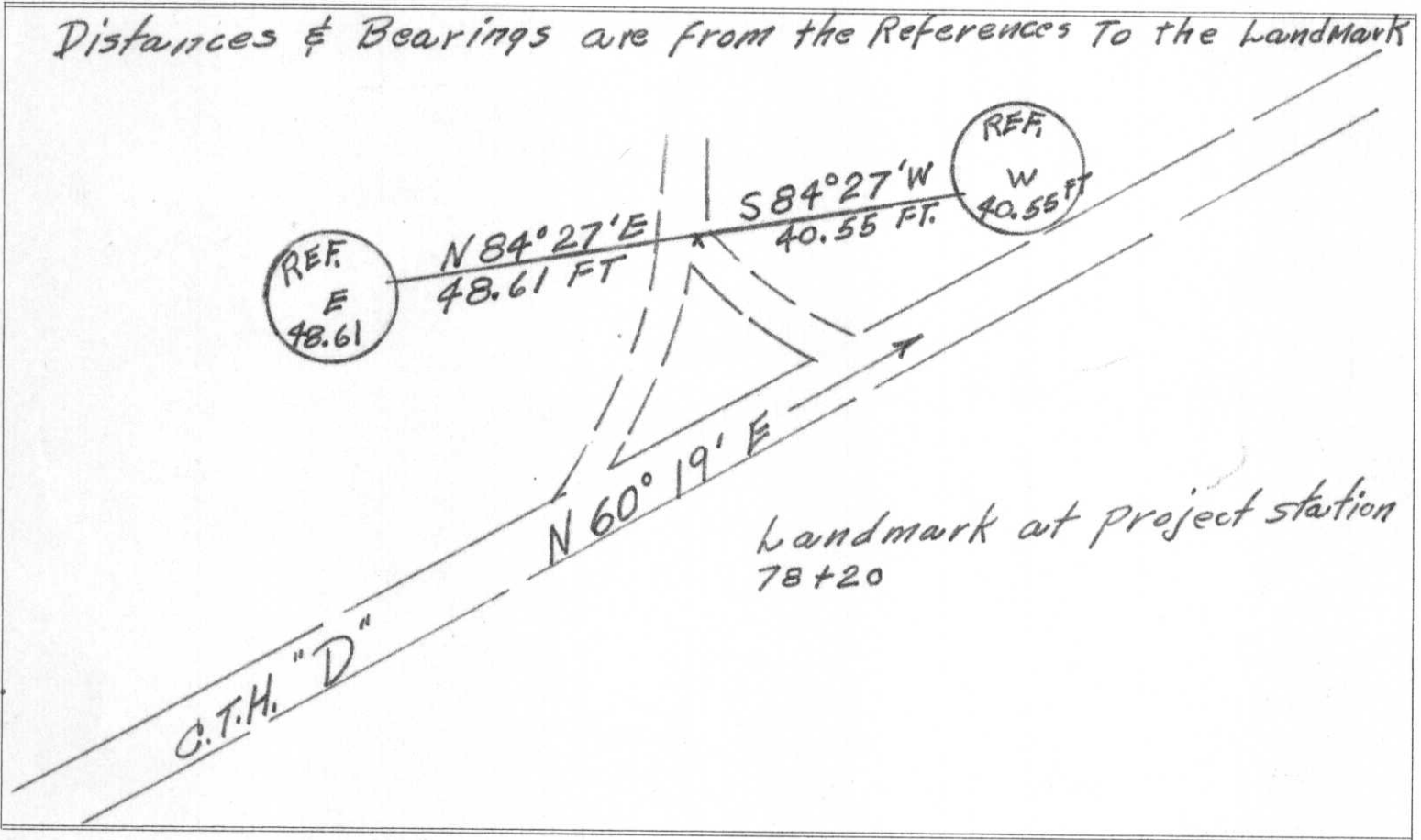


LOCATION SKETCH
(Location of landmark indicated by "x")



This space for copy of field notes or ties to the above described landmarks

Distances & Bearings are from the References to the Landmark



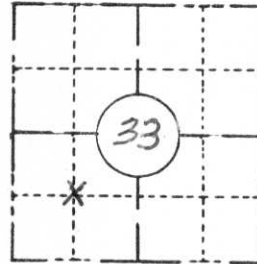
FILED UNDER PROJECT NUMBER <i>S 0567(2)</i>			COUNTY CLERK'S OFFICE	
SHC DISTRICT OFFICE NUMBER <i>7</i>			COUNTY OF <i>Lincoln</i>	WISCONSIN } 55
CITY <i>Rhinelander</i>		COUNTY <i>Oneida</i>	DATE RECEIVED FOR RECORD <i>2/17/69</i>	DATE COPY SENT TO COUNTY SURVEYOR <i>None</i>
LOCATED OR ESTABLISHED BY NAME <i>J. Martinson</i>			SIGNATURE OF COUNTY CLERK <i>Ken Aldenberg</i>	
TITLE <i>Proj. Eng.</i>			DATE <i>11-25-68</i>	

X-10

PRESERVATION OF LANDMARKS

(Pursuant to Section 59.635(7) Wisconsin Statutes)

COUNTY <i>Lincoln</i>		
TOWN <i>King</i>		
HIGHWAY <i>C.T.H. "D"</i>		
SECTION <i>33</i>	TOWNSHIP <i>35 N</i>	RANGE <i>7E</i>
TYPE OF LANDMARK <i>1/16 Corner</i>		

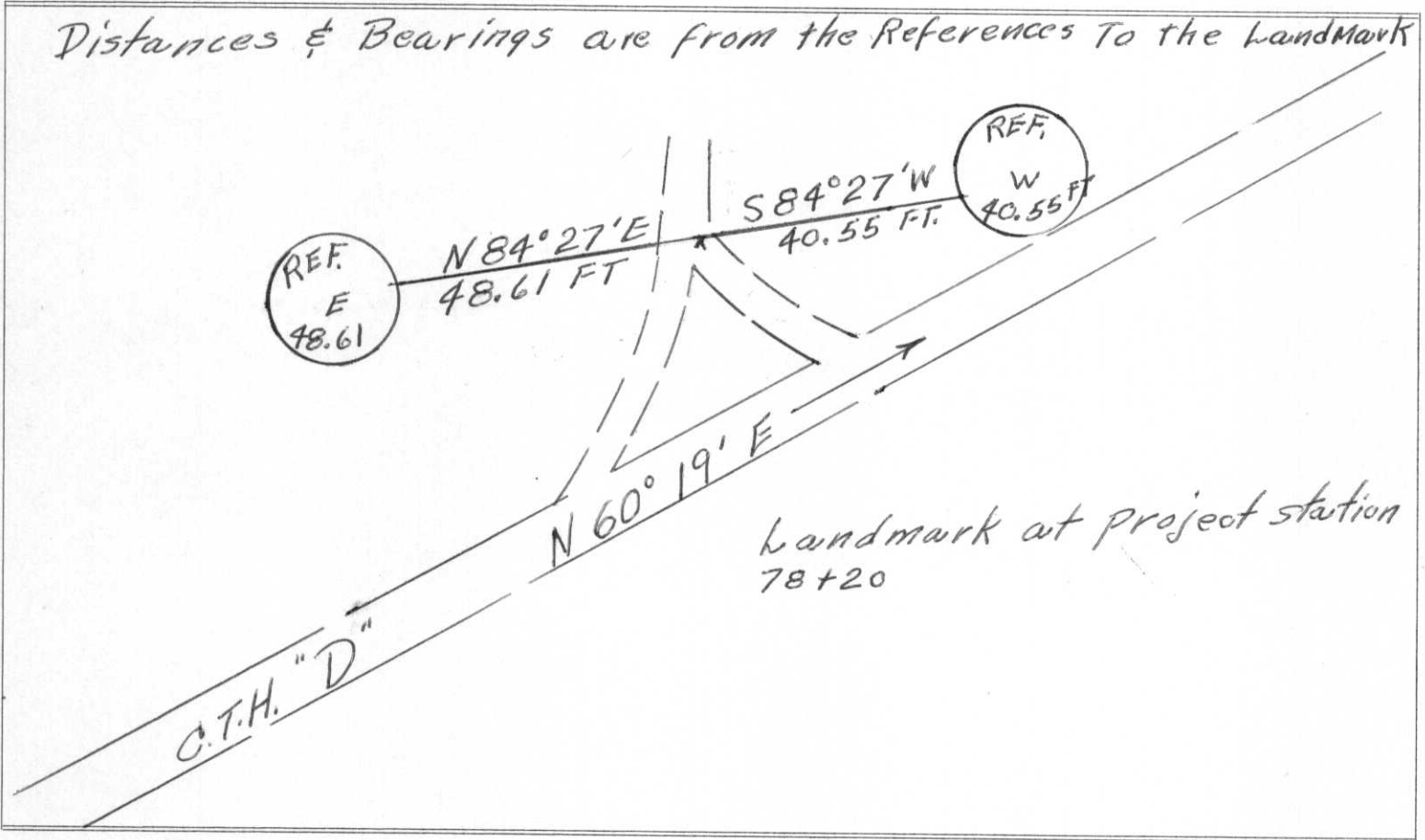


LOCATION SKETCH
(Location of landmark indicated by "x")



This space for copy of field notes or ties to the above described landmarks

Distances & Bearings are from the References To the Landmark



FILED UNDER PROJECT NUMBER <i>S 0567(2)</i>			COUNTY CLERK'S OFFICE	
SHC DISTRICT OFFICE NUMBER <i>7</i>			COUNTY OF <i>Lincoln</i>	WISCONSIN } SS
CITY <i>Rhinelander</i>	COUNTY <i>Oneida</i>		DATE RECEIVED FOR RECORD <i>2/17/69</i>	DATE COPY SENT TO COUNTY SURVEYOR <i>None</i>
LOCATED OR ESTABLISHED BY NAME <i>J. Martinson</i>			SIGNATURE OF COUNTY CLERK <i>Ken Oldenburg</i>	
TITLE <i>Proj. Eng.</i>			DATE <i>11-25-68</i>	

2-10